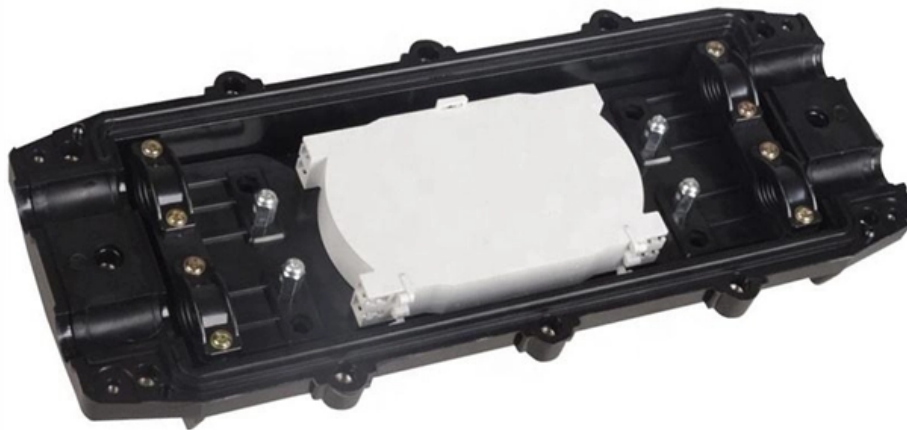


# **Austrian Data Center Cold Aisle Desktop**





## Austrian Data Center Cold Aisle Desktop

---

### Cold Aisle Containment

Aisle containment in the data center requires that cabinets are aligned in a hot aisle/cold aisle layout. Containment panels or strips create a partition to isolate

[Read More](#)

### Cold Aisle Containment: Complete Implementation Guide for Data Center

Complete cold aisle containment guide for data centers. Learn CAC benefits, implementation steps, and achieve 35% cooling cost reduction.

[Read More](#)



## **Approaches to Data Center Containment**

The data center is fraught with power and cooling challenges. For every 50 kW of power the data center feeds to an aisle, the same facilities typically apply 100-150

[Read More](#)

## **Hot And Cold Aisle Data Center Containment**

Containment is needed in data centers and is a best practice followed by most modern data centers. For more inputs on containment and designing and

[Read More](#)

## **Hot Aisle Containment vs. Cold Aisle Containment: How**

When applied to hot aisle containment or cold aisle containment, DCIM can provide valuable insights and facilitate effective management. With

[Read More](#)



## **Data Centre Cooling: Hot Aisle and Cold Aisle Design**

Here's a brief overview of how this arrangement works: Cold Aisle: In the cold aisle, the fronts of all server racks face each other. Servers in this aisle draw in cool air

[Read More](#)

## **Data Center Temperature: Hot And Cold Aisle Containment**

Hot and cold aisle containment systems are crucial for data center temperature. Click to learn about airflow, cooling efficiency, and thermal

[Read More](#)

## **Cold & Hot Aisle Containment For Data Center Efficiency**

Learn how cold and hot aisle containment improves airflow, reduces energy use, and



boosts reliability in data centers. Backed by CFD insights from

[Read More](#)

## **Optimizing Data Center Cooling: The Power Of Hot And**

Discover how to optimize your data center cooling system with hot and cold aisle containment. Learn about the assessment, design, installation, and

[Read More](#)

## **Euro cloud Exoscale trials Diggers direct liquid cooling**

A1 Digital's cloud provider Exoscale is trialing a direct liquid cooling system in its Vienna, Austria, data center. The direct liquid cooling system,

[Read More](#)



## **Move to a Hot Aisle/Cold Aisle Layout**

A Time-tested Technique The hot aisle /cold aisle data center layout was originated by IBM in 1992 and it is one of the oldest ways to save energy in the data center.

[Read More](#)

## **Containment Strategies in High Density Data Centers**

Last week we continued our article series on the challenges of keeping IT equipment cool in high density environments. This week, we outline some

[Read More](#)

## **Cold Aisle Containment Systems Market in Austria , Report**

The Austrian market for Cold Aisle Containment (CAC) systems stands at a critical inflection point, shaped by the dual imperatives of digital infrastructure expansion and stringent

[Read More](#)



## **Data Center Hot Aisle/Cold Aisle Layout Design**

Are you interested in creating the most energy efficient design for your Data Center Server Room? Consider the Hot Aisle/Cold Aisle layout design.

[Read More](#)

## **Hot and Cold Aisle Containment in Data Centers**

Hot Aisle Containment The objective of the hot aisle containment data center is to enclose hot air masses and redirect them further to cooling systems.

[Read More](#)

## **Hot Aisle vs Cold Aisle Containment Explained (Data Center Cooling)**



Hot aisle and cold aisle containment are foundational concepts in data center design. When implemented correctly, they improve efficiency, reduce energy consumption, extend

[Read More](#)

## **Server Room Containment Systems , Hot & Cold Dial Containment in Data**

Whether you need cold aisle containment, hot aisle containment, or a hybrid approach, our expert team ensures maximum thermal efficiency and reduced PUE (Power Usage Effectiveness). In modern

[Read More](#)

## **cold aisle containment , Eziblank**

Cold aisle containment is a highly effective strategy for improving the efficiency and performance of data centre cooling systems. This approach involves physically separating the cold air used for cooling

[Read More](#)



## **Data center containment**

The freestanding construction with wall panels, roof panels and sliding doors, offers corporate and commercial data centers a cost-efficient 'pay-as-you-grow' solution

[Read More](#)

## **Hot Aisle vs Cold Aisle Containment Explained (Data Center Cooling)**

In this guide, we'll break down how hot aisle and cold aisle configurations work, what containment systems do, and why airflow management is critical in today's high-density data centers.

[Read More](#)

## **The Basics of Hot Aisle, Cold Aisle Data Center Configurations**



Though hot aisle, cold aisle configurations have a number of variations, at their most simplest it consists of server racks in rows with cold air intakes facing one way and hot air exhausts

[Read More](#)

## **Hot Aisle vs Cold Aisle Containment: Full Guide**

Hot aisle vs cold aisle containment -- compare both strategies, understand the pros and cons, and find the right cooling solution for your data

[Read More](#)

## **Hot Aisle vs. Cold Aisle Containment for Data Centers**

Involving data centers, one of the biggest concerns faced is airflow management. Temperature and humidity need to be carefully controlled to protect

[Read More](#)



## **Optimizing Data Center Cooling for Energy Efficiency**

Disadvantages of Cold Aisle Containment Hotter Overall Room Temperature: The data center space outside the contained aisles becomes the

[Read More](#)

## **Ground Supported (GS) Hot and Cold Aisle Containment**

This case study details the application of an Ardmac ground supported, structural HAC (Hot Aisle Containment) assembly for a data centre project based in Austria.

[Read More](#)

## **Typical Data Center HVAC Hot Aisle / Cold Aisle Layout**

Download scientific diagram , Typical Data Center HVAC Hot Aisle / Cold Aisle Layout from publication: Report to Congress on Server and Data Center Energy



[Read More](#)

## **Cut Cooling Costs with Hot & Cold Aisle Containment , STULZ**

Discover how hot and cold aisle containment improves cooling efficiency, cuts energy costs, and supports uptime in modern data centres.

[Read More](#)

### **Contact Us**

---

For datasheets, pricing, or custom data center infrastructure solutions, please visit:  
<https://www.zeldaterblanchephotography.co.za>