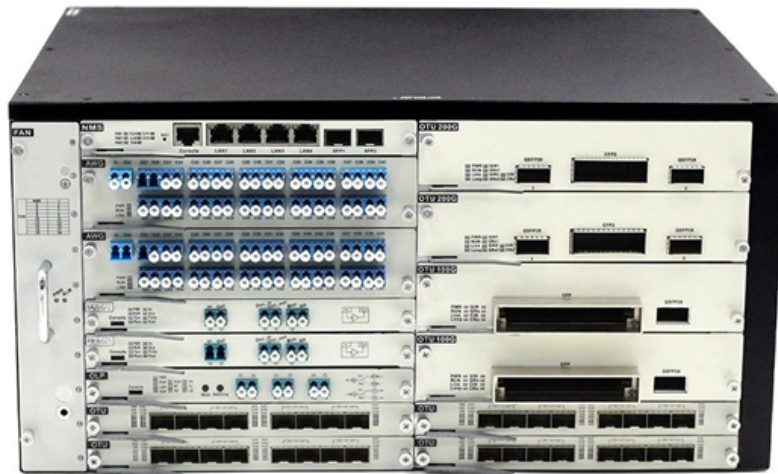


Busline bridge code





Busline bridge code

Live bus arrivals

Text message Send a text to 87287 with your bus stop code and we'll send a reply with live bus arrival information for that stop. From overseas networks, use +44 7797 800 287. Texts cost the standard

[Read More](#)

Easy Patterns in Python: The Bridge -- Code nomad

Easy Patterns in Python: The Bridge -- Code nomad When we design software, we often face a dilemma: how do we create flexible systems without

[Read More](#)



HMS Networks

HMS creates products that enable industrial equipment to communicate and share information with software and systems. In short: Hardware Meets Software(TM).

[Read More](#)

Endpoint Security recent news , Dark Reading

Explore the latest news and expert commentary on Endpoint Security, brought to you by the editors of Dark Reading

[Read More](#)

Bus Services Promo Codes -- Knoji Promo Code Finder

Save at Bus Services with Bus Services promo codes and coupons. Search 10 million verified coupon codes for the best Bus Services deals and discounts.

[Read More](#)



A2B A2Bridge int2code A2B Bridge

A2Bridge is a compact USB tool designed for working with A2B (Automotive Audio Bus) technology. It enables faster device testing and validation, communication troubleshooting, and more efficient

[Read More](#)

Fully Custom Bridge Map With Wall rides, Jumps and more! Share Code

Fully Custom Bridge Map With Wall rides, Jumps and more! Share Code 134017895 1 / 4
comments Best Add a Comment

[Read More](#)

D6614 Dental Code: Bridge Abutment - Inlay/Onlay



The D6614 dental code is essential for cases requiring inlay/onlay-retained bridge abutments, offering a conservative yet durable solution.

[Read More](#)

Trans-Bridge Lines Coupon Code (10% OFF), Promo & Discount

Save up to 10% OFF with these current trans-bridge lines coupon code, free transbridgelines promo code and other discount voucher. There are 20 transbridgelines coupons available in May 2026.

[Read More](#)

Keeping London moving

Information on all forms of transport in London including cycle hire. Routes, maps, plan a journey, tickets sales, realtime traffic and travel updates.

[Read More](#)



MOSS Feature Codes for Road Survey

The document contains a list of feature codes and descriptions for various features that may be surveyed and mapped for road surveys. It includes codes for

[Read More](#)

VicRoads , Home

At VicRoads, we're passionate about making it easy for Victorians to get on the road. We operate vehicle registration and licensing services on behalf of the Victorian

[Read More](#)

Trans-Bridge Lines Promo Codes & Coupons 2026_ lovepik

Trans-Bridge Lines primarily offers transportation services, specifically bus services. They provide daily bus service to various destinations, including airports, cities, and points of interest.



[Read More](#)

Airport Express

Mobile tickets must be validated by scanning the code on the exterior of the bus before you board. Low-floor, air-conditioned articulated buses are in operation on

[Read More](#)

Terminal Codes

RWS (Department / Ministry of Waterways and Public Works) made a list of differences between SMDG and RIS index terminal codes Converge into one code list per one specific date (big bang) Maintain

[Read More](#)

GitHub



In this the functions of the AHB2APB Bridge to make the signals compatible with the high performance bus i.e. AHB with low performance bus i.e. APB, to do so we

[Read More](#)

London Bridge Bus Station (91261) stop

Up-to-date arrival times and connections at bus stop London Bridge Bus Station in London. Access bus schedules, nearby stop information, and service maps. Navigate transit routes with ease and

[Read More](#)

CAN Bus Bridge (CAN-to-CAN) Application With

Basically, there are two scenarios where a CAN Bridge application is of use: 1. Connecting two separate CAN Bus networks. 2. Network length extension. While

[Read More](#)



Underground Dictionary and Glossary

Sectionalisation Gap - Special current rail gap at certain substations which is longer than the span of the current collector shoes of a car so that the car does not become a "bridge" between one traction

[Read More](#)

Contact Us

For datasheets, pricing, or custom data center infrastructure solutions, please visit:
<https://www.zeldaterblanchephotography.co.za>