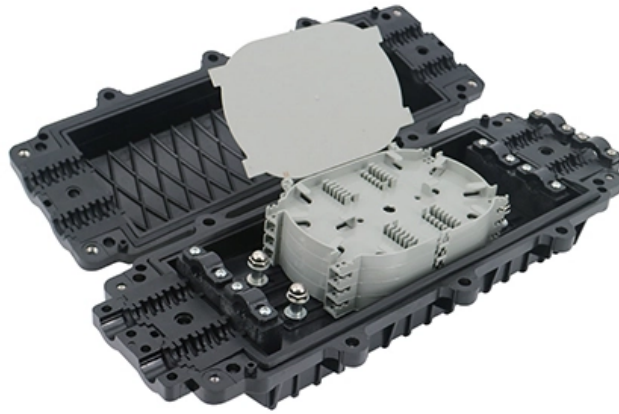


Can wires be brought into the top of an explosion-proof distribution box





Overview

The wire inlet and outlet of explosion-proof distribution box should be set at the bottom of the box, not at the top, side, back or door of the box; The incoming line and outgoing line shall be sheathed and bundled, and waterproof bending shall be made; The conductor bundle shall. Explosion-proof electrical equipment, such as explosion-proof distribution boxes, is specifically designed for hazardous environments where flammable gases, vapors, or dust may be present. Proper installation, wiring, and usage are critical to ensuring the safety and functionality of these systems. It takes the incoming power and safely distributes it to different circuits throughout your building.



Can wires be brought into the top of an explosion-proof distribution

How to Wire an Explosion-Proof Distribution Box and

Always use explosion-proof certified cables and wiring that are compatible with the distribution box. Low-quality or non-certified cables may not provide the

[Read More](#)

Energy Distribution

BARTEC offers one of the most extensive ranges of explosion-proof and substance-resistant components, devices, and systems for controlling, switching, and

[Read More](#)



Explosion-proof electrical plant: conduit installation

The use of cables for electrical equipment connection in potentially explosive atmospheres is now a common practice. Some time ago, explosion-proof

[Read More](#)

Special requirements for cable laying and distribution box installation

? Red Flag : Finding a wiring modification without updated documentation should trigger immediate system shutdown. Undocumented changes are potential catastrophe seeds.

[Read More](#)

What is Explosion Proof? A Look Into Control Panels

Examples of Explosion-Proof Enclosures One example of explosion-proof standards is shown by ADALET enclosures' products. The company

[Read More](#)



Explosion Proof Enclosures , Complete Hazardous Area

Learn everything about explosion proof enclosures for hazardous areas--design, certification, and industrial applications with ATEX, IECEx, and Class I Div

[Read More](#)

EXPLOSION PROTECTION

When replacing components or entire pieces of equipment, the explosion and equipment specifications should be noted. This publication affords

[Read More](#)

Explosion Proof Classifications

Explosion classified areas are defined by the following classes, divisions and groups, by



the National Electric Code (NEC) (*See caution below). Many hoist manufacturers can furnish equipment to

[Read More](#)

The installation requirements for the distribution box

Learn how to install a distribution box safely and correctly. Covers wiring, placement, standards, and expert tips for a compliant setup.

[Read More](#)

Installation and Wiring of High and Low Voltage Explosion-Proof

Use rubber plates to connect the tray to the explosion-proof distribution box, protecting wires and cables. See the diagram for the connection between the tray and the box.

[Read More](#)



Explosion Proof Electrical Equipment

Discover the critical safety of Explosion Proof Electrical Equipment with our guide. Ensure your industry stays protected and compliant.

[Read More](#)

Wiring Diagram of 1p, 1p+n, 2p in Explosion-Proof Distribution Box

Experienced electricians often ponder whether to connect the neutral wire of a residential explosion-proof distribution box circuit to the neutral bar. Not every circuit's neutral wire needs to be

[Read More](#)

Precautions for installation of explosion proof power distribution box



The explosion-proof power distribution box and the explosion-proof lighting distribution box should be set separately. If they are combined in the same distribution box, the power and

[Read More](#)

Explosion-proof electrical plant: conduit installation

In this system, a cable enters directly into the explosion-proof enclosure through an exproof cable gland that prevents to a possible explosion from spreading outside

[Read More](#)

Explosion-Proof & Flameproof Enclosures , EX Industries

Explosion-proof (also spelled explosionproof) and flameproof enclosures are solidly constructed junction boxes for use in hazardous area locations. These enclosures

[Read More](#)



Ex Distribution Boards & Enclosures , mx-ex

Ex distribution boards - Explosion-proof distribution boards designed for Ex and ATEX areas. Customizable, safe, and certified electrical solutions.

[Read More](#)

Full Guide on Explosion-Proof Distribution Panel

In conclusion, explosion-proof distribution panels are a critical safety feature in hazardous industrial environments, providing reliable protection against potential

[Read More](#)

Requirements for electrical installations in Ex zones

Electrical installations in explosive atmospheres must be carried out in a way that prevents sparks from entering the explosive atmosphere. Therefore, an important



[Read More](#)

Can holes be drilled in explosion-proof boxes?

Share to: The main function of the explosion-proof distribution box is to ensure the normal operation of electrical equipment in flammable and explosive

[Read More](#)

The Complete Guide to Distribution Box: Installation, Types & More

Can I add circuits to an existing distribution box? Circuit additions are possible if the distribution box has adequate capacity and available spaces. However, you must ensure the total

[Read More](#)



What is "Explosion Proof" and When is it Needed?

What makes a fume hood classified as Explosion Proof? It is a common misconception that working with a flammable chemical automatically requires an EP fume hood. However, only a small percentage of

[Read More](#)

Requirements And Specifications For Installation Of

The wiring process should be standardized to avoid copper wire exposure or unclear wire number identification. All cable inlets and cover joints

[Read More](#)

WHITE PAPER on Explosion Proof and Intrinsic Safety Solutions

Abstract Oil refineries, petrochemical processing plants and even coal mines to a certain extent operate in the presence of combustible gases and vapors. So, it's very important for equipment, more

[Read More](#)



Explosion-Proof Electrical Distribution Boxes: Applications in

Explosion-proof electrical distribution boxes can be categorized into three primary types: flameproof, gas-tight, and pressurized enclosures, each designed with specific key features to enhance safety in

[Read More](#)

Explosion proof distribution box standards and installation issues

Consequences: the wiring in the lighting explosion-proof distribution box (board) is messy, and the second board in the box presses against the pipe opening, which affects the entry of wires into the box.

[Read More](#)

Contact Us



For datasheets, pricing, or custom data center infrastructure solutions, please visit:
<https://www.zeldaterblanchephotography.co.za>