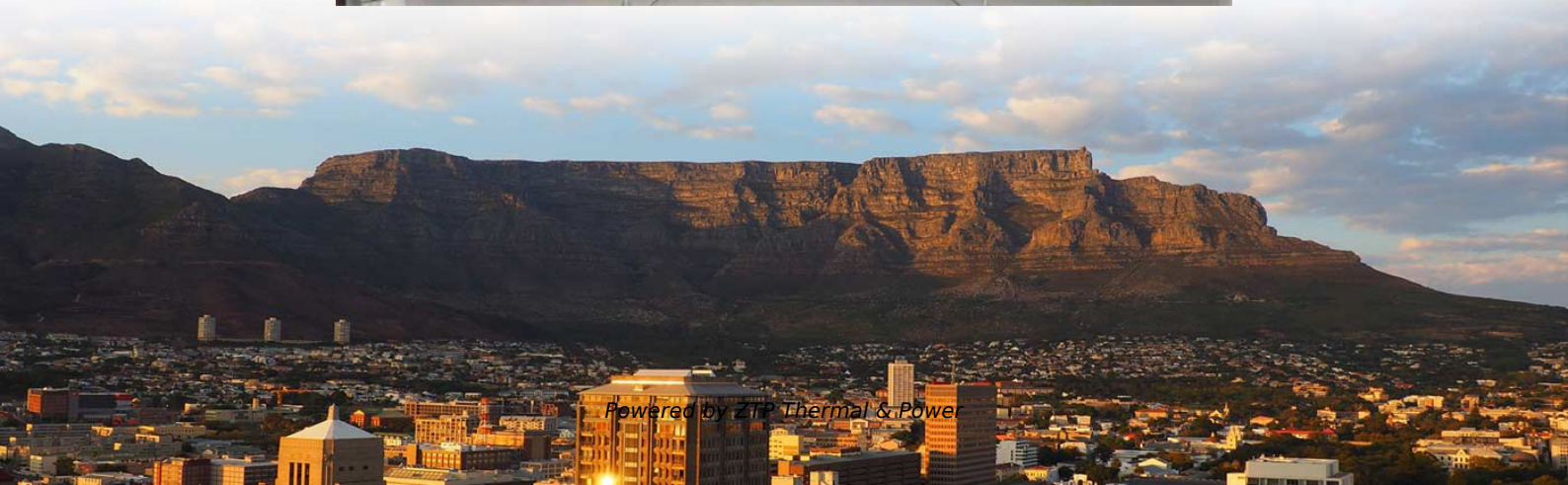
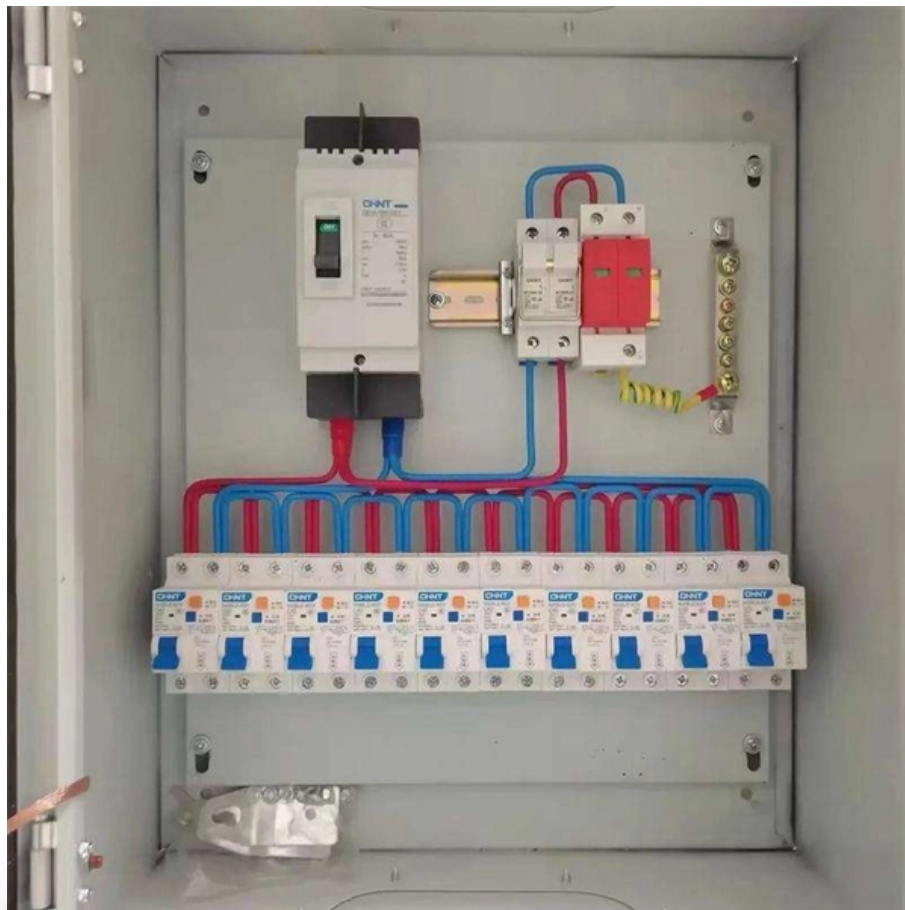


Configuration of the dedicated power distribution box for the elevator





Configuration of the dedicated power distribution box for the elevator

Elevator control PB panelboard design guide

With the ability to control up to four elevators in a common shaft, the Elevator Control Panelboard offers the needed controls in a space-saving design while allowing access by the various trades involved

[Read More](#)

A Step-by-Step Guide to Understanding Elevator

Elevator wiring diagrams also include detailed information about the power supply and distribution systems. This information is crucial for understanding how

[Read More](#)



High-Rise Building Electrical Design Guide , PDF

This document discusses the electrical system design requirements for high-rise buildings. It covers the typical power needs of high-rise buildings including

[Read More](#)

Elevator Control Switches Product Guide

Siemens Elevator Control Switch (ECS) is designed to interrupt incoming AC power upon receiving a signal from a Fire Alarm Control Panel (FACP) for both cable and hydraulic elevators. The Elevator

[Read More](#)

Residential Elevator Electrical Guide

The document outlines the electrical requirements for an elevator machinery space. It specifies that an electrician needs to provide: 1) Main power via a 10/3 wire

[Read More](#)



6-1 Elevator Machine Room, Control Room, and Machinery Space

DoD UFC Elevators > Chapter 6 Electrical > 6-1 Elevator Machine Room, Control Room, and Machinery Space Go To Full Code Chapter

[Read More](#)

ELEVATOR HOISTWAY EQUIPMENT:

The updated articles explain the technical basis for the design of elevator mechanical and structural equipment in a qualitative way in order that the reader gain a basic understanding of the mechanical

[Read More](#)

Understanding Elevator Wiring: A Comprehensive Diagram



Discover the essential components and connections in an elevator wiring diagram to understand how elevators operate with precision and safety.

[Read More](#)

Power Distribution Equipment

Introduction Power Distribution Equipment is a term generally used to describe any apparatus used for the generation, transmission, distribution, or control of electrical energy. This section concentrates

[Read More](#)

Elevator Wiring Diagrams » Wiring Diagram

Elevator Wiring Diagrams are technical schematic representations illustrating the electrical connections, control circuits, and power distribution

[Read More](#)



Elevator Control Switches Product Guide

The Elevator Control Switch comes completely assembled for quick installation, eliminating the labor and time needed to assemble individual components. The smart numbering system helps ensure the

[Read More](#)

The Complete Guide to Distribution Box: Installation, Types & More

Blog The Complete Guide to Distribution Box: Installation, Types & More By Admin Aug 2, 2025 No Comments # distribution box Introduction Electrical systems power our homes, offices, and

[Read More](#)

Power Distribution Equipment



MCCs generally consist of a common power bus and a vertical bus for each section to which combination motor controllers are plugged on. The combination starter consists of motor starter,

[Read More](#)

Elvoro Home Elevator

Two different drive systems are available with your elevator, the Hydraulic Drive and the in-line Drive. This Design guide is intended to assist architects, contractors, home owners and elevator

[Read More](#)

Power Distribution Boxes Explained Simply

Discover the essentials of a Power Distribution Box--how it works, key types, benefits, and tips to ensure safe, efficient electrical power management.

[Read More](#)



Elevator Wiring and Control Diagram , PDF , Elevator

This document provides a wiring diagram for an elevator system. It shows the connections between various electrical components like the main

[Read More](#)

Your questions answered: Design considerations for

For generator distribution switchboard wouldn't the normal power source available fault current drive the AIC Rating? Gary Gluck: Not unless they

[Read More](#)

A Step-by-Step Guide to Understanding Elevator

By examining the diagram, technicians can identify the main power sources, transformers, and circuit breakers used in the elevator system, enabling them to



[Read More](#)

Dedicated Branch Circuits

DoD UFC Elevators > Chapter 6 Electrical > 6-1 Elevator Machine Room, Control Room, and Machinery Space > 6-1.4 Dedicated Branch Circuits Go To Full Code Chapter

[Read More](#)

Bussmann series Power Modul elevator disconnect checklist no. 10724

Our Power Module Switch is an all-in-one elevator disconnect switch available in configurations to meet virtually any single elevator shutdown and disconnect requirement.

[Read More](#)



NEC Article 620: Elevators, Part 2

AI Overview NEC Article 620 prescribes wiring, protection, grounding and installation rules for elevators and related equipment. Each car, machine

[Read More](#)

Dedicated Branch Circuits

For each of the following circuits, provide a separate, dedicated branch circuit with a fused disconnect or breaker in the elevator MR or CR. Disconnects and breakers must be designed to be lockable in the

[Read More](#)

Understanding Distribution Boxes: A Comprehensive Guide

A distribution box, also known as a power distribution box or electrical distribution box, is used to distribute electrical power safely to multiple

[Read More](#)



Temporary Power and Dedicated Circuits for New

Definition: Temporary Power & Dedicated Circuits in Elevator Projects Temporary power is an interim electrical supply used during construction and

[Read More](#)

What is a Distribution Box? - A Comprehensive Guide

A distribution box organizes and controls power flow, ensuring safety and efficiency in electrical systems.

[Read More](#)

Generators and Elevators

Proper design for generators and elevators is imperative for multiple reasons. On some



commercial and multi-family projects where there are multiple

[Read More](#)

The installation requirements for the distribution box

A distribution box is the heart of any electrical system. It takes the incoming power and safely distributes it to different circuits throughout your

[Read More](#)

Contact Us

For datasheets, pricing, or custom data center infrastructure solutions, please visit:
<https://www.zeldaterblanchephotography.co.za>