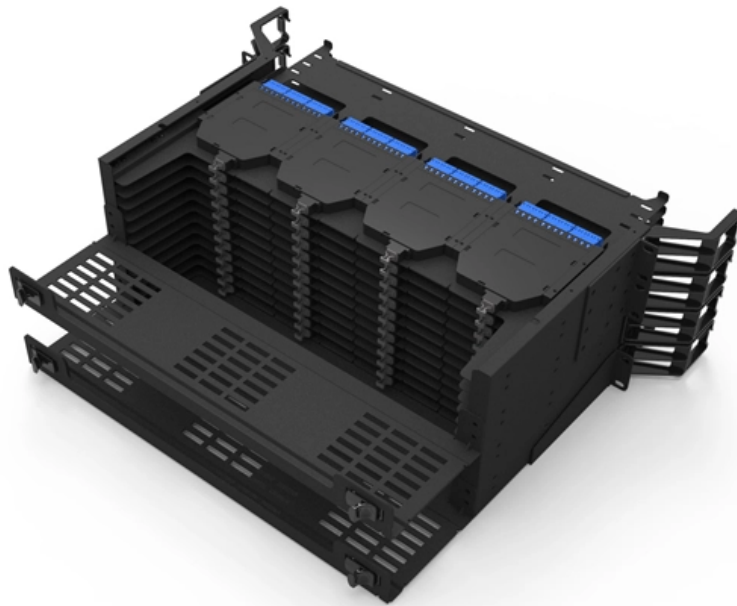




ZTP Thermal & Power

Cost-effective cold aisle wall-mounted





Overview

Aisle containment separates hot and cold air for efficient cooling, better temperature control, improved equipment performance and energy savings. Installation is simple and cost-effective, with manageable kits and included hardware, requiring no contractor or HVAC. Tate's Ceiling Suspended Hot Aisle Containment system captures hot exhaust air into the overhead plenum to improve cooling efficiency. While advanced cooling systems like chilled water plants and CRAH units play a major role, one of the most effective strategies is much simpler: controlling how air moves through the data hall. By containing airflow, data centers can reduce energy waste, lower cooling costs, and improve overall system reliability. This separation ensures: Depending on your facility's layout, Armstrong Aisle Containment Solutions offer both Hot Aisle Containment (HAC) and Cold Aisle Containment.



Cost-effective cold aisle wall-mounted

Hot And Cold Aisle Containment For Data Center

Design Features of Typical Containment System
A typical Cold Aisle Containment system features enclosed cold aisles with doors at each end, a

[Read More](#)

A DEEP DIVE INTO THE WORLD OF HOT & COLD AISLE

BENEFITS OF DATA CENTER HOT & COLD AISLE CONTAINMENT ZONE. Energy Cost Reduction: Lower energy consumption and operational costs through targeted cooling strategies. Improved

[Read More](#)



CONTAINMENT SYSTEM

We can custom design solutions to fit any site situation and, of course, not only provide the best possible solution, but you'll get it fast and without the "premium" costs.

[Read More](#)

Hot Aisle Containment (HAC) for Data Centers Explained

According to Energy Star, data centers with hot/cold aisle arrangements can reduce their energy expenses by 5 to 10% by using

[Read More](#)

Aisle Containment for Server Rooms and Data Centers

Aisle Containment Enhance cooling efficiency and reduce energy costs with aisle containment solutions from Server Racks Online. Designed for data centers and IT environments, our hot aisle and cold

[Read More](#)



Smarter Hot & Cold Aisle Containment for Data Centers

Discover how hot and cold aisle containment systems, enhanced with polycarbonate multiwall panels provided by thyssenkrupp Engineered Plastics, help data centers cut energy costs,

[Read More](#)

Cold & Hot Aisle Containment For Data Center Efficiency

Cold aisle and hot aisle containment are not optional upgrades--they are fundamental strategies for any modern, efficient data center. By physically

[Read More](#)

Hot & Cold Aisle Containment Systems For Data



Efficient, Scalable Solutions for Data Centers for Today and Tomorrow Our aisle containment systems are designed to optimize energy use and enhance airflow

[Read More](#)

Data Center Hot/Cold Aisle Containment Systems , Eaton

An aisle containment system is a simple way to improve cooling efficiency in hot aisle/cold aisle rack configurations. Essentially creating a room within the aisle,

[Read More](#)

Hot Aisle vs Cold Aisle Containment: Full Guide

Hot aisle vs cold aisle containment -- compare both strategies, understand the pros and cons, and find the right cooling solution for your data

[Read More](#)



Hot vs Cold Aisle Containment: 40% Cooling Savings

Discover how hot and cold aisle containment revolutionizes cooling efficiency, cuts energy costs by up to 40%, and extends equipment lifespan. |

[Read More](#)

Hot & Cold Aisle Containment Systems For Data

Cool Shield(TM) containment offers state-of-the-art hot and cold aisle containment solutions designed to maximize data center efficiency while significantly reducing

[Read More](#)

Cold Aisle Containment & Hot Aisle Containment

Executive Summary of Aisle Containment This article examines cold aisle containment and hot aisle containment (also known as cold or hot air containment) from a neutral perspective. Cross-Guard, as



Data Center Hot/Cold Aisle Containment Systems , Eaton

Aisle containment keeps hot and cold air separated for more efficient cooling, better temperature control and improved equipment performance. Increased cooling

[Read More](#)

Cold Aisle Containment in Data Centers , Subzero

With cooling provided through a raised floor, this cold aisle containment project uses rigid wall panels in conjunction with the Polar Cap 2 roof system to provide

[Read More](#)

Hot Aisle vs. Cold Aisle Containment for Data Centers



Hot Aisle Containment vs. Cold Aisle Containment The goal of hot and cold aisle contaminants is very similar, even if they are entirely different

[Read More](#)

What are hot and cold aisles in the data center?

Using hot and cold aisles in a data center is part of an energy-efficient layout for server racks and other computing equipment. Find out more here.

[Read More](#)

IMPROVING DATA CENTER EFFICIENCY AND CAPACITY WITH AISLE

With careful planning and effective installation, aisle containment solutions can reduce operating costs, improve PUE, and lengthen the life cycle of the data center.

[Read More](#)



Hot Aisle vs Cold Aisle Containment Explained (Data Center Cooling)

In this guide, we'll break down how hot aisle and cold aisle configurations work, what containment systems do, and why airflow management is critical in today's high-density data centers.

[Read More](#)

Cold Aisle Containment: The Ultimate Guide To

Additionally, cold aisle containment tends to be easier to implement compared to hot aisle containment, as it typically requires fewer modifications to the existing

[Read More](#)

Aisle Containment Solutions , Data Center Resources



Fixed Vertical Panels Cool Shield aisle containment fixed vertical panels are a very attractive and efficient method for managing the airflow in particular for hot aisle

[Read More](#)

Hot vs Cold Aisle Containment: Which Datacenter Cooling Strategy Is

Fire suppression systems may require modification to accommodate the containment structures, adding complexity and cost to the implementation. Comparing Hot Aisle vs. Cold Aisle

[Read More](#)

Cold Aisle Containment

Cold Aisle Containment or CAC is a proven, relatively easy to deploy solution for effectively managing airflow within a data centre. A CAC system surrounds the

[Read More](#)



Implementing Hot and Cold Air Containment in Existing Data Centers

The best containment solution for an existing facility will depend on the constraints of the facility. While ducted hot aisle containment is preferred for highest efficiency, cold aisle containment tends to be

[Read More](#)

Aisle containment system buying guide

Aisle containment separates hot and cold air for efficient cooling, better temperature control, improved equipment performance and energy savings. Installation is simple and cost-effective, with

[Read More](#)

Aisle Containment , Modular Cleanroom & Data Center Containment



Enhance airflow control and energy efficiency in data centers, laboratories, and cleanroom environments with Armstrong Aisle Containment Ceilings & Walls. Our modular systems

[Read More](#)

Containment

Our range of aisle containment provides cost-effective and energy-efficient solutions for maximising performance. Containment solutions from Tate reduce costs by increasing adaptability for future

[Read More](#)

Containment

Our range of aisle containment provides cost-effective and energy-efficient solutions for maximising performance. Containment solutions from Tate reduce costs by

[Read More](#)



Move to a Hot Aisle/Cold Aisle Layout

A Time-tested Technique The hot aisle /cold aisle data center layout was originated by IBM in 1992 and it is one of the oldest ways to save energy in the data center.

[Read More](#)

Contact Us

For datasheets, pricing, or custom data center infrastructure solutions, please visit:
<https://www.zeldaterblanchephotography.co.za>