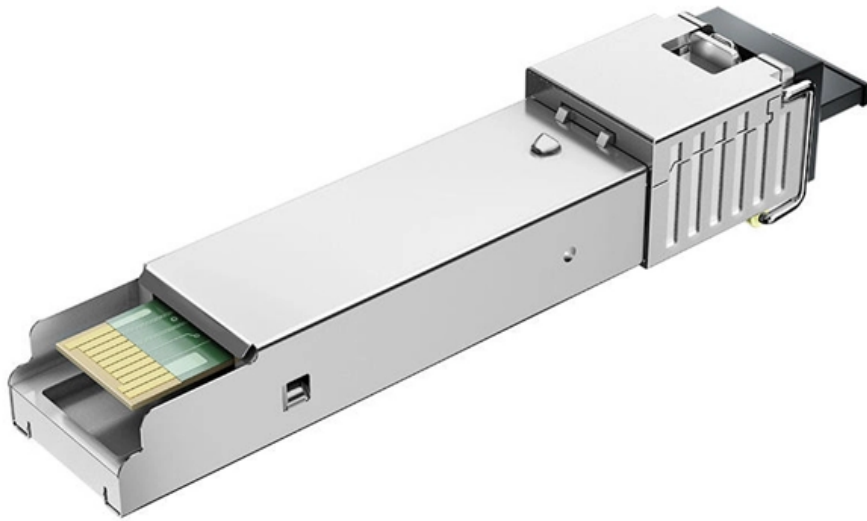


# **Cwdm optical module dfb**





## Cwdm optical module dfb

---

### fr23\_111

As an essential solution for signal sources in DWDM applications, we developed wavelength monitor integrated CW DFB laser modules. The unique structures of our laser module were opti-mized for 25

[Read More](#)

### 1300 nm 100 mW CW CWDM4 DFB LASER DIODE CHIPS

1300 nm 100 mW CW CWDM4 DFB LASER DIODE CHIPS IND00Dn01D106 FEATURES  
Designed for uncooled O-band CWDM4 Qualified according to GR-468 for use in non-hermetic packages

[Read More](#)



## **DFB-CWDM-M**

The DFB-CWDM-M from Optilab is a Laser with Wavelength 1270 to 1610 nm, Power 2 mW, Operating Temperature 10 to 50 Degree C, Storage Temperature -65 to

[Read More](#)

## **DML 25G CWDM Laser**

Proven in volume production and GR-468 qualified for long-term reliability, the DML 25G CWDM enables low-cost, energy-efficient optical transmitters for high-density 25G and 100G transceiver modules.

[Read More](#)

## **Transceiver Optical Module Cisco 10G SFP+ 1590nm CWDM**

Industry-grade Transceiver Optical Module Cisco 10G SFP+ 1590nm CWDM ensures enhanced efficiency. industrial construction, factory tested..



[Read More](#)

## **Understanding the 100G QSFP28 CWDM4 Optical Transceiver**

The 100G QSFP28 CWDM4 optical module is a high-performance, cost-effective solution for short-to-medium distance interconnects in modern data centers, enterprise campus networks, 5G

[Read More](#)

## **OSICS DFB DWDM , Spec sheet , EXFO**

CWDM CHANNELS EXFO's module covers most CWDM channels from 1270 nm to 1610 nm plus two additional channels: the first at 1625 nm and the second at 1650 nm. The channel center of a DFB is

[Read More](#)



## **Design and fabrication of a four-channel CWDM cooled**

This article presents the design, fabrication, and testing methodology of a four-channel coarse wavelength division multiplexing (CWDM) cooled

[Read More](#)

## **GlobalFoundries accelerates adoption of co-packaged optics for**

SCALE CPO solution is the industry's first OCI MSA capable platform and built with GF's proven silicon photonics technology MALTA, N.Y., May 4, 2026 - GlobalFoundries (Nasdaq: GFS)

[Read More](#)

## **Transceiver Optical Module Cisco 10G SFP+ 1470nm CWDM**

Deploy Transceiver Optical Module Cisco 10G SFP+ 1470nm CWDM for certified data centers. 80km transmission, 1470nm wavelength with RoHS.

[Read More](#)



## **Design and fabrication of a four-channel CWDM cooled**

Design and fabrication of a four-channel CWDM cooled DFB-LD module with OSFP electrical interface for CPO external laser sources Optics

[Read More](#)

## **Microsoft PowerPoint**

The DS-DFx0701D-1xx0-TM, O-Band High Power DFB Series is an InGaAsP-based and uncooled distributed feedback laser optimized for data comm application. Denselight's advanced technology

[Read More](#)

## **Transceiver Optical Module Cisco 1.25G SFP 1490nm CWDM**



Buy Transceiver Optical Module Cisco 1.25G SFP 1490nm CWDM with 40km transmission, 1490nm wavelength. tested module for networks. Same-day dispatch.

[Read More](#)

## **CWDM DFB Butterfly Laser Diode , Laser Module**

Shengshi Optical is a laser diode equipment manufacturer. The 1mw-12mw 1270nm-1610nm CWDM DFB butterfly laser module uses multi-quantum well chip,

[Read More](#)

## **Transceiver Optical Module Cisco 10G SFP+ 1610nm CWDM**

Transceiver Optical Module Cisco 10G SFP+ 1610nm CWDM - engineered for enterprise-grade installations. 10km transmission, 1610nm wavelength with.

[Read More](#)



## **CWDM DFB laser diode with TEC-DFB laser , SLED Module**

CWDM DFB laser diode with TEC The CWDM series laser diodes cover customer selection of large wavelengths from 1260nm to 1650nm which are fabricated in a hermetically sealed 14-pin butterfly

[Read More](#)

## **1270 nm to 1610 nm Nanosecond Pulsed CWDM Laser**

The Optilab NPL-CWDM-M is a variable pulsed CWDM DFB laser source, a building block ideal for MOPA, LIDAR, OTDR laser systems development and

[Read More](#)

## **Transceiver Optical Module Cisco 1.25G SFP 1310nm CWDM**

Compatible Transceiver Optical Module Cisco 1.25G SFP 1310nm CWDM for enterprise



networks systems. superior product. Express available.

[Read More](#)

## **OSICS DFB DWDM , Spec sheet , EXFO**

EXFO's module covers most CWDM channels from 1270 nm to 1610 nm plus two additional channels: the first at 1625 nm and the second at 1650 nm. The channel center of a DFB is located at  $\pm 3$  nm

[Read More](#)

## **CWDM DFB Butterfly Laser Diode , Laser Module**

Our high-power laser module has a low threshold current, high optical power output and large spectral width, resulting in high stability during operation.

[Read More](#)



## **CATV Laser modules**

DFB-Laserdiodes for CATV and Broadband applications from Ortel The demand for delivery of high speed, broadband data over traditional CATV network

[Read More](#)

## **Transceiver Optical Module Cisco 10G SFP+ 1470nm CWDM**

Cost-effective Transceiver Optical Module Cisco 10G SFP+ 1470nm CWDM for connectivity. proven performance, extended lifespan. Stock ready.

[Read More](#)

## **DFB-CWDM Series**

The DFB-CWDM is a CWDM Coaxial DFB-LD Module for CWDM analog communication, CATV return-path, laboratory instrument, and R&D applications. Formerly known as the LDM5S51X, this cost



## **Transceiver Optical Module Cisco 1.25G SFP 1430nm CWDM**

CWDM 1.25G SFP optical transceiver is a versatile network component. Operating within the 1270-1610nm wavelength range, the single fiber SFP CWDM transceiver module supports data rates of

[Read More](#)

## **Charting the Path Toward 1.6T and 3.2T Optical Module**

Furthermore, the shift toward 200G/lane optical links in data centers sets the stage for 1.6T and 3.2T optical module solutions with 200G/lane serial electrical interfaces.

[Read More](#)

## **Contact Us**

---

For datasheets, pricing, or custom data center infrastructure solutions, please visit:



<https://www.zeldaterblanchephotography.co.za>