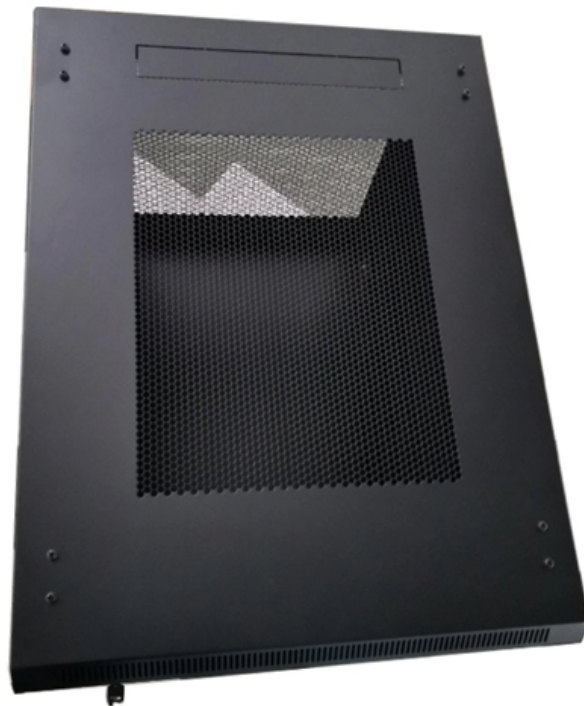


Distribution Box Circuit Switching





Overview

North American distribution boards are generally housed in sheet metal enclosures, with the circuit breakers positioned in two columns operable from the front. The three incoming phase wires connect to the busbars via a main switch in the centre of the panel.



Distribution Box Circuit Switching

A Definitive Guide To Distribution Boxes

Box for distributing power When we talk about distribution boxes, we can't forget about Power Distribution Boxes, sometimes known as PDUs or distros. A distro is a device that safely

[Read More](#)

The Ultimate Guide to Distribution Box Types

They typically include a main switch, a series of circuit breakers (MCBs or RCBOs), and often a Residual Current Device (RCD) for enhanced safety against electric

[Read More](#)



Complete Guide For Distribution Boxes Types

Distribution boxes, also known as electrical distribution boards or panels, are pivotal components in electrical systems, ensuring the safe and organized distribution of

[Read More](#)

How to Wire a Home Distribution Box

Circuit Breaker is a device like a fuse which makes and breaks the circuit. In other words, Circuit Breaker is a device which switch ON and OFF

[Read More](#)

The Complete Guide to Distribution Box: Installation, Types & More

Home distribution boxes typically handle single-phase power supplies and contain 6 to 24 circuits. They include standard circuit breakers for lighting, outlets, and major appliances like water

[Read More](#)



Modular American-style Prefabricated Distribution Box with 16 Sockets

Distribution BoxType 16Number of Sockets Place of Origin:Jiangsu, China Model Number:ASP Brand Name:windrise Lock Type:Certified Lock Lock Type:Hand press rotating single point lock Model

[Read More](#)

Understanding Distribution Boxes:A Comprehensive Guide

Understanding its significance, this article covers what a distribution box is, how it functions, its structure, the various types available, and how it

[Read More](#)



Distribution Box Guide: Types, Components & Solutions

What is a Distribution Box? A distribution box, or DB box, is a circuit breaker enclosure. It is a vital part and central hub of any electrical system. The

[Read More](#)

Explore Power Distribution Box Types and Functions

Distribution boxes vary in shape and structure due to different usage scenarios and requirements, but the basic components include fuses, circuit

[Read More](#)

Distribution switchboards

A distribution switchboard is the point at which an incoming-power supply divides into separate circuits, each of which is controlled and protected by the fuses or switchgear of the

[Read More](#)



Explore Power Distribution Box Types and Functions

To put it bluntly, the distribution box is the control and distribution center of electricity. Distribution boxes vary in shape and structure due to different

[Read More](#)

Distribution Box Guide: Types, Components & Solutions

Understand distribution boxes (DB boxes) in 5 minutes. Learn about types, components, functions, and uses. Find the perfect DB box for your needs.

[Read More](#)

What Is a Distribution Box?

What to Look for When Choosing a Distribution Box If you're going to buy a distribution



box, there are several things you should look for. You should

[Read More](#)

Panelboards and Distribution Panels: What They Are

Introduction Navigating the world of electrical distribution can be confusing, with terms like panelboard, switchboard, and distribution box often

[Read More](#)

Distribution Boxes Types - The Complete Guide

A commonly used distribution box contains doorbells, earth leakage devices, timers, or contact breakers. However, the distribution boxes have

[Read More](#)



The Importance of Distribution Boxes in Electrical Systems

A distribution box is an exposed or concealed metal box that houses the circuit breakers that regulate the distribution of electricity throughout a

[Read More](#)

Single Phase Distribution Box (DB) Wiring Diagram and

Hey, in this article we are going to see the Single Phase Distribution Box Wiring Diagram and Connection Procedure. A distribution board or

[Read More](#)

Distribution Box and Selection Guide

Different settings have distinct electrical requirements: Residential: Homes typically require single-phase power and a Distribution Box with fewer

[Read More](#)



Distribution Boxes Types - The Complete Guide

The power distribution boxes deliver electricity from the main electrical main to other circuits. Several distribution boxes are designed for specific use in

[Read More](#)

Understanding Distribution Boxes:A Comprehensive Guide

The box usually contains switches, fuses, or circuit breakers that control the flow of electricity. Distribution boxes vary in size and shape based on

[Read More](#)

Distribution Boards

Distribution boards, often referred to as electrical panels or breaker boxes, serve as the



nerve center of any electrical system. Here we explore the crucial parts of a distribution board and gain insights into

[Read More](#)

Understanding Distribution Boxes: A Comprehensive Guide

A distribution box is a vital piece of equipment that ensures the effective and safe distribution of electrical power in various parts within a building

[Read More](#)

A Complete Guide to Distribution Boards

Read this comprehensive buyer's guide on distribution boards, explaining what they are, their uses, types, how to connect distribution boards,

[Read More](#)



Distribution Board vs. Distribution Box: What's the

A distribution board, on the other hand, is a more modern system that uses resettable circuit breakers. These breakers trip when there's a

[Read More](#)

Contact Us

For datasheets, pricing, or custom data center infrastructure solutions, please visit:
<https://www.zeldaterblanchephotography.co.za>