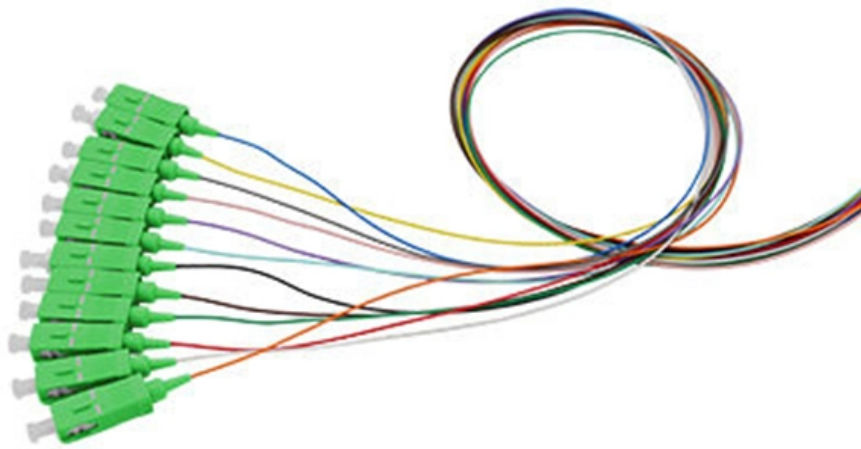


Eastern European Dust Explosion-proof Distribution Box





Overview

Designed for use in hazardous environments classified as Zone 1, 2 (Gas) and Zone 21, 22 (Dust). Engineered with high-quality low-copper aluminium alloy, these enclosures ensure maximum durability, corrosion resistance, and protection in explosive atmospheres. CENTER is an expert center for explosion protection of production facilities with explosive dust/air mixtures and risks of explosion due to overpressure of flammable liquids and gases in equipment. Our specialists provide a range of services on a turnkey basis, from design to commissioning. ROSE Control Stations (local control points) are certified for use in explosion-endangered zones containing combustible. We offer bespoke, custom-made terminal boxes and terminal box combinations, as well as standard products with short delivery times. Atex Delvalle provides a custom made facility for hazardous area stainless steel Aisi 304L & Aisi 316L Atex and IECEx Certified junction boxes, terminal boxes, large atex enclosures, Empty enclosures.



Eastern European Dust Explosion-proof Distribution Box

What is Explosion Proof Distribution Box?

Introduction to Explosion Proof Distribution Boxes An Explosion Proof Distribution Box is a critical safety device engineered to withstand internal explosions without

[Read More](#)

Ex Junction Boxes and Atex Enclosures - Atex Delvalle

Our explosion protection Ex enclosures and equipment are comprehensive and widely configurable. Reliable in use and convenient to install, their overall quality

[Read More](#)



Explosion proof distribution box standards and installation issues

I. Explosion-proof distribution box general standards Distribution box production technology indicators to meet the specifications and design requirements, and in accordance with the provisions of the

[Read More](#)

HRMD91 Explosion proof Distribution Box (Ex d IIB+H2)

HRMD91 Explosion proof Distribution Box Explosion protection to - IEC - CENELEC - NEC Can be used in Zone 1 and Zone 2 Zone 21 and Zone 22 Class I, Zone 1

[Read More](#)

Distribution box solutions for explosion-proof environments in

Explosion-proof distribution boxes represent where regulatory wisdom meets engineering excellence. What appears as simple protective enclosures are actually



sophisticated safety systems honed

[Read More](#)

HRMD92 Explosion proof Distribution Box (Ex d IIB+H2)

Warom Explosion proof Distribution Box (Ex d IIB+H2) in 316 stainless steel. Available with a wide range of built in components.

[Read More](#)

Ex-Junction boxes and terminal enclosures ATEX

The sturdy CEAG junction boxes made of light metal are used to distribute and conduct electricity in Zone 1 and Zone 2 areas with no risk of explosion.

[Read More](#)



Control and Distribution Panels , Ex d , EJB Series

The enclosure series EJB forms the optimal basis for the application-specific configuration of terminal boxes, control stations as well as control and distribution

[Read More](#)

Custom CZ1290 Explosion-proof distribution boxes

CZ Electric Co., Ltd is a Custom CZ1290 Explosion-proof distribution boxes suppliers and company, Modular design Easy operations with windows Operating handles

[Read More](#)

European Explosion-Proof Enclosures , EX Industries

Designed for use in hazardous environments classified as Zone 1, 2 (Gas) and Zone 21, 22 (Dust). Engineered with high-quality low-copper aluminium alloy, these

[Read More](#)



Explosion Proof Distribution Box & Electrical Enclosures

Durable Hexlon Explosion Proof Distribution Boxes and Electrical Enclosures, IECEx and ATEX certified for Zone 1 and Zone 2.

[Read More](#)

Explosion Proof Power Distribution Boxes

Flameproof and explosion proof, these power overhaul distribution boxes are suitable for use in hazardous areas. Specs: Ex mark: Ex de IIC T4 Gb DIP A21 TA, T4

[Read More](#)

Ex Distribution Boards & Enclosures , mlx-ex

Ex distribution boards - Explosion-proof distribution boards designed for Ex and ATEX



areas. Customizable, safe, and certified electrical solutions.

[Read More](#)

The New Standard in Aluminum Explosion-Proof Solutions , CZ

After years of continuous innovative technology and product development, the products now cover explosion-proof components, explosion-proof electrical equipment, explosion-proof lamps

[Read More](#)

Terminal boxes , Junction boxes , Ex , Ex e , Ex d , ATEX , Explosion

Safely conduct, connect and distribute energy in hazardous areas with R. STAHL's terminal boxes. We offer bespoke, custom-made terminal boxes and terminal box combinations, as well as standard

[Read More](#)



Why the ABXJ51 Explosion-Proof Distribution Box Is My Go

Yes, if you're installing electrical components near flammable vapors, dust, or gases like at an offshore drilling platform or chemical processing unit you absolutely must use an explosion-proof distribution

[Read More](#)

Ex Equipment

ROSE Aluminium, Polyester and Stainless-Steel Ex Enclosures and Control Stations assure reliable protection for electrical distribution systems in explosion

[Read More](#)

Explosion Proof Enclosures

Ex-Proof & Flameproof Junction Boxes & Enclosures Supermec ATEX Junction Box &



Enclosures are designed to satisfy most of our clients' requirements for CONTROL explosion-proof and flameproof

[Read More](#)

Distribution Boxes HRMD96 Series Explosion-proof Distribution Panels

·Equipped with specialized hinge structure, which can prevent the flameproof joints from damage when opening and closing the box, and greatly prolong the service life of box. The boxes can be combined

[Read More](#)

Explosion-Proof Distribution Boxes & Panels Manufacturer

The explosion-proof distribution box safely delivers power in hazardous zones (oil, gas, chemical plants) with rugged, spark-resistant casing--ATEX/IECEX, IP66 certified for reliable operation in explosive

[Read More](#)



Custom CZ1290 Explosion-proof distribution boxes

About CZ CZ Electric Co., Ltd was established in 1990, is a CZ1290 Explosion-proof distribution boxes (socket with transformer) suppliers, and is headquartered in

[Read More](#)

Explosion-Proof Distribution Box , Product Center

Explosion-proof distribution boxes are designed to safely control and distribute electrical power in hazardous environments, preventing ignition risks.

[Read More](#)

Terminal and Junction Boxes (Ex d) , Explosion Protection

Terminal and Junction Boxes (Ex d) Pepperl+Fuchs provides a specialized portfolio of Ex d (flameproof) and Ex tb (dust protection by enclosure) certified terminal boxes and



junction boxes engineered for

[Read More](#)

Terminal boxes , Junction boxes , Ex , Ex e , Ex d , ATEX , Explosion

Terminal boxes for safe installation in hazardous areas Safely conduct, connect and distribute energy in hazardous areas with R. STAHL's terminal boxes. We offer bespoke, custom-made terminal boxes

[Read More](#)

"Explosion Proof Distribution Box"

Our Explosion Proof Distribution Box offers exceptional quality within the Power Distribution Cabinet & Box category. Power distribution cabinet & box price varies by specs, OEM requirements, and factory

[Read More](#)



Contact Us

For datasheets, pricing, or custom data center infrastructure solutions, please visit:
<https://www.zeldaterblanchephotography.co.za>