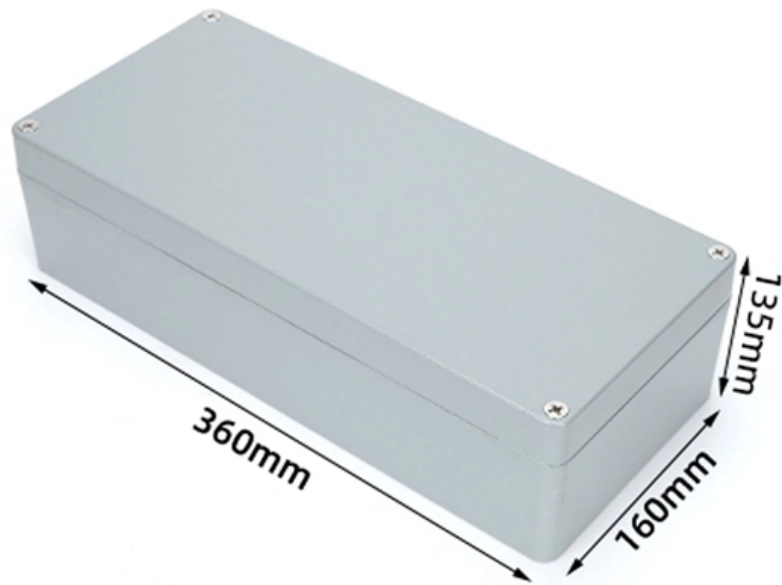


Embedded AI Server





Embedded AI Server

Introducing Microsoft 365 Copilot , Your Copilot for Work

With Microsoft 365 Copilot, we are bringing the power of next-generation AI to work. Microsoft 365 Copilot isn't just a better way of doing the same things.

[Read More](#)

Artificial Intelligence (AI) Servers - Intel

Explore key considerations for AI servers and how to design them to support AI workloads optimally.

[Read More](#)



Integrating AI/ML in Embedded Systems: A Full Guide

Explore a comprehensive guide to integrating AI/ML in Embedded Systems. Uncover the seamless integration of ML in embedded systems.

[Read More](#)

AI Architect, Embedded solutions

Etteplan is a highly multitalented, collaborative technology service company that solves challenges and drives change collectively -- bringing people and technology together with a strategy

[Read More](#)

ServiceNow moves beyond the sidecar AI era, giving customers a

New Context Engine provides the enterprise context to ground every decision made by AI agents Build anywhere, deploy on ServiceNow -- ServiceNow Build Agent skills open platform to



Building the AI Server

AI/ML demands are reshaping servers. Explore how CPUs, GPUs, FPGAs and AI accelerators drive performance for workloads like deep learning

[Read More](#)

Claude Vulnerabilities Let Attackers Exfiltrate Sensitive

Three chained vulnerabilities in Claude.ai, Anthropic's widely used AI assistant, that together allow attackers to silently exfiltrate sensitive conversation

[Read More](#)

ServiceNow AI pricing change takes on enterprise ROI



ServiceNow's AI features are now embedded throughout its software platform in a bid to ease enterprise adoption.

[Read More](#)

Claude Gov models for U.S. national security customers

Improved understanding and interpretation of complex cybersecurity data for intelligence analysis This builds on our commitment to bring responsible

[Read More](#)

Four AI Use Cases SAP Unveiled at Hannover Messe for Embedded

At Hannover Messe 2026, SAP used four AI use cases to show how embedded intelligence is moving into ERP workflows across manufacturing, logistics, service, and asset

[Read More](#)



Oracle AI Agents Help Marketing, Sales, and Service Leaders Unlock

New role-based AI agents embedded in Oracle Fusion Cloud Applications help organizations efficiently enhance customer experiences.

[Read More](#)

Oracle AI Agents Help Marketing, Sales, and Service

New role-based AI agents embedded in Oracle Fusion Cloud Applications transform slow and reactive sales, marketing, and service processes

[Read More](#)

IBASE Releases ES1002 Edge AI Server Powered by AMD EPYC



Combining powerful computing performance, flexible expandability, high-speed connectivity, and a reliable design, the ES1002 serves as a robust and versatile infrastructure

[Read More](#)

Experian partners with ServiceNow to embed AI decisioning in workflows

Experian and ServiceNow (NYSE: NOW) announced a multi-year global partnership to integrate Experian's Ascend Platform capabilities directly into ServiceNow's AI workflows, according

[Read More](#)

AMD Formally Launches Ryzen AI Embedded P100 Series 8-12

Today AMD formally announced those higher-tier Ryzen AI Embedded P100 series parts. The Ryzen AI Embedded P100 series up to six cores continue to be sampled now while the models



[Read More](#)

SAP at Hannover Messe 2026: Supply Chain AI Agents , SAP News

At Hannover Messe 2026, SAP is embedding AI agents into manufacturing and supply chain workflows to boost resilience and efficiency.

[Read More](#)

AMD Unveils Strategy to Lead the \$1 Trillion Compute Market and

Embedded AMD offers the industry's broadest adaptive and embedded portfolio, spanning FPGAs, embedded x86 processors and semi-custom solutions. Since 2022, AMD has

[Read More](#)



What is Embedded AI? Benefits, Architecture, and Use

While edge computing refers to the network of localized servers, embedded AI acts as the "brain" for those nodes. This synergy ensures that data does not have to

[Read More](#)

Embedded AI Explained: Why It's the Future of Tech

Unlike traditional AI systems that depend on cloud servers for processing, Embedded AI enables local intelligence --allowing devices to think,

[Read More](#)

AI Server and AI PC Solutions for Every AI Application

Our scalable AI infrastructure and server offerings are complemented by our full-stack software, physical and edge AI products, and end-user applications. No

[Read More](#)



The lethal trifecta for AI agents: private data, untrusted

The lethal trifecta for AI agents: private data, untrusted content, and external communication. 16th June 2025. If you are a user of LLM systems that

[Read More](#)

A Jargon-Free Guide on How AI Server Architecture Works

Whether you're deploying AI in your business, tinkering with a project, or just want to understand the tech shaping our world, this guide discusses what

[Read More](#)

Edge Computing Solutions For Enterprise , NVIDIA



Train, build, deploy, and scale vision AI applications from edge to cloud with NVIDIA Metropolis, unlocking valuable insights for spaces, including retail, warehouses,

[Read More](#)

Edge AI Systems

With support for both embedded and server-class deployments, Advantech enables customers to simulate, train, and infer at the edge--driving next-generation AI

[Read More](#)

Embedded AI: What it Is and How it Works

Embedded AI is the future of data analytics. Here is how embedded artificial intelligence systems work and what you can use them for.

[Read More](#)



Edge AI Server Powers Next-Gen AI with AMD EPYC(TM) Embedded 8004

IBASE Technology Inc. unveiled the ES1002 Edge AI Server, a high-performance platform engineered to accelerate next-generation edge AI and data-intensive applications. Powered by AMD

[Read More](#)

Contact Us

For datasheets, pricing, or custom data center infrastructure solutions, please visit:
<https://www.zeldaterblanchephotography.co.za>