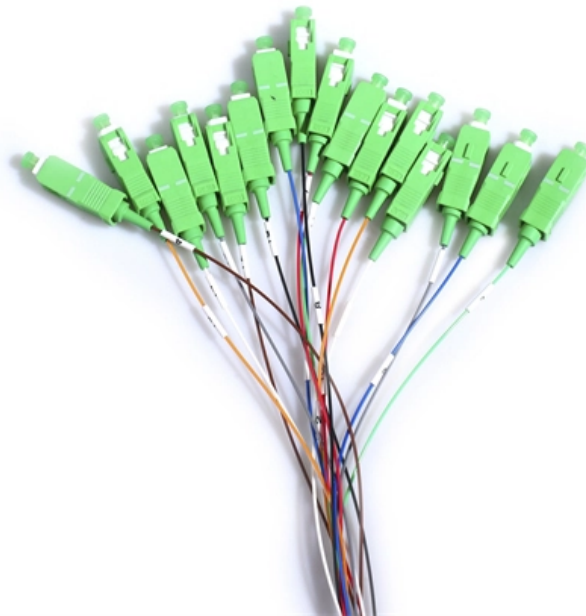


Explosion-proof specifications for cast aluminum distribution boxes in Uganda





Overview

A specification for explosion proof distribution cabinets must include detailed electrical components for hazardous areas, enclosure materials, and cable entry systems. Eaton's Crouse-Hinds series AboX junction and terminal enclosures are engineered for safe and reliable performance in a wide range of hazardous area and harsh applications within oil & gas, petrochemical, chemical and other heavy industries. Rated NEMA 4/7/9 for UL and cUL Classified hazardous areas, are constructed from cast aluminum and is available in sizes ranging from 06" x 08" x 04" to 32" x 36" x 12". 3/4 Inch Gup Explosion Proof Junction Box, Body Material and Finish Ductile Iron Electro Galvanized and Aluminum, Acrylic Paint, Cover Material Copper Free Cast Aluminum, O Ring Neoprene, 10 Hubs (NPT): 2 Top, 2 Bottom, 1 Each Side and 4 In The Back For more info visit: electrification.com. Customizable configuration of operators, cable entry quantities and cable gland types as per specification.



Explosion-proof specifications for cast aluminum distribution boxes

EATON CROUSE-HINDS SERIES GUAB360-SA Cast

Description Outlet Boxes: Type - Explosion-Proof Certified Conduit Outlet Box; Configuration - GUAB; Hub Size - in - 1"; Material - Aluminum; Hub Quantity - 2

[Read More](#)

KILLARK GRR-2 Cast Outlet Boxes , WESCO

Specifications Type: Explosion-Proof Certified Conduit Outlet Box Configuration: Universal Hub Size: 3/4 in. Material: Aluminum Hub Quantity: 5 Hubs Hub Placement: (4) Sides Cross (1) Bottom Hub Style:

[Read More](#)



Terminal boxes , Junction boxes , Ex , Ex e , Ex d , ATEX , Explosion

Terminal boxes for safe installation in hazardous areas Safely conduct, connect and distribute energy in hazardous areas with R. STAHL's terminal boxes. We offer bespoke, custom-made terminal boxes

[Read More](#)

EMERSON GRT75-A Cast Outlet Boxes , WESCO

Specifications Country of Origin: Mexico - Subject to change Type: Explosion-Proof Certified Conduit Outlet Box Configuration: GRT Hub Size: 3/4 in. Material:

[Read More](#)

Requirements And Specifications For Installation Of

A leakage protector should be installed in the distribution box to provide additional safety protection. Installation requirements in special

[Read More](#)



Cast Aluminum Explosion Proof Enclosures

Find Cast Aluminum Explosion Proof Enclosures related suppliers, manufacturers, products and specifications on GlobalSpec - a trusted source of Cast Aluminum Explosion Proof Enclosures

[Read More](#)

Cast Iron Ex-Proof DB - Orostar

Cast Iron Ex-Proof DB Explosion proof Panel made of Cast Iron Enclosure We have effectively crafted and delivered power distribution boards with ATEX and IECEX

[Read More](#)

KILLARK GRSS-1 Cast Outlet Boxes , WESCO



Specifications Type: Explosion-Proof Certified Conduit Outlet Box Configuration: Universal Hub Size: 1/2 in.

[Read More](#)

Aluminium Distribution Boxes For Zone 1-21 and Zone 2-22

The document details specifications for aluminium distribution boxes designed for hazardous areas (Zone 1/21 and Zone 2/22) with explosion protection

[Read More](#)

GUP214-TB , Outlet box , T& B Rigid Fittings , Cable Protection

3/4 Inch Gup Explosion Proof Junction Box, Body Material and Finish Ductile Iron Electro Galvanized and Aluminum, Acrylic Paint, Cover Material Copper Free Cast Aluminum, O Ring Neoprene, 10

[Read More](#)



Explosion Proof Boxes

SBOX Series Explosion-proof Junction Boxes Used in chemical, oil refining, oil exploitation, offshore oil platforms, oil tankers, military and other hazardous areas; Suitable For cable distribution when

[Read More](#)

CAST ALUMINUM DISTRIBUTION BOXES

ATX boxes are made of EN AB 46100 aluminium alloy (previously UNI 5076) in accordance with standards UNI EN 1676 and oven-painted with RAL7040 epoxy-polyester resins.

[Read More](#)

KILLARK GEMCA-2 Cast Outlet Boxes , WESCO



Outlet Boxes: Type - Explosion-Proof Certified Conduit Outlet Box; Configuration - GECCT; Hub Size - in - 3/4; Material - Aluminum; Hub Quantity - 3 Hubs; Hub

[Read More](#)

CAST DEVICE BOXES o STANDARD AND HOSTILE LOCATIONS

CAST DEVICE BOXES o STANDARD AND HOSTILE LOCATIONS FDC 1, 2 & 3 with lugs
FSOC Type (No Mounting Lugs) FSL Type

[Read More](#)

Distribution box solutions for explosion-proof environments in

When we talk about ATEX-certified junction boxes, we're discussing systems that undergo rigorous testing to earn that classification. They're redesigned to meet two critical challenges: contain internal

[Read More](#)



Control and Distribution Panels , Ex d , EJB Series

The enclosures are certified Ex d IIB+H2 and Ex tb as well as "explosion-proof". They are available in many sizes, a wide range of operating elements and

[Read More](#)

Custom explosion-proof distribution box for mines

Custom Explosion-Proof Distribution Boxes for Mines Mulan Group delivers rugged, ATEX-certified electrical enclosures custom-built for mining operations.

[Read More](#)

CONDUIT PRODUCTS GUAT26-PVC-CT-3/4 Cast Outlet Boxes

Specifications Description Specifications Type: Explosion-Proof Certified Conduit Outlet Box Configuration: GUAT Hub Size: 3/4 in.



Ex Local Control Stations & Distribution Boxes

Atex control stations, explosion protected control units and distribution boxes made stainless steel maritime grade AISI 316L or AISI 304L. Atex Delvalle provides a

[Read More](#)

Flameproof Distribution Board , Explosion proof

At Bharat Flameproof, we have decade-old flameproof equipment manufacturing skills for Flameproof Distribution Boxes. These distribution boards are

[Read More](#)

Explosion Proof Illumination Distribution Boxes (With



Flameproof and explosion proof, these power overhaul distribution boxes are suitable for use in hazardous areas. Specs: Ex mark: Ex de IIC T4 Gb DIP A21 TA, T4

[Read More](#)

Explosionproof Outlet Boxes

Appleton(TM) GRH Conduit Outlet Boxes
Appleton(TM) GRJ Conduit Outlet Boxes
Appleton(TM) GRJS Universal Conduit Outlet Boxes
Appleton(TM) GRSS Conduit

[Read More](#)

Technical Specification for Explosion Proof Cabinets: A Guide

Developing a precise technical specification for explosion proof cabinets is fundamental for safety and operational integrity in hazardous environments. These specifications dictate the

[Read More](#)



HAZARDOUS & GENERAL PURPOSE

Explosion proof control enclosures and junction boxes are designed to house arcing/sparking devices in Division 1 rated areas. Rated NEMA 4/7/9 for UL and cUL Classified hazardous areas, are

[Read More](#)

EMERSON GRUE75-A Cast Outlet Boxes , WESCO

Specifications Country of Origin: Mexico - Subject to change Type: Explosion-Proof Certified Conduit Outlet Box Configuration: Universal Hub Size: 3/4 in. Material: Aluminum

[Read More](#)

Explosion Proof Enclosures for Hazardous Zones



Discover the importance of explosion-proof enclosures in hazardous environments. Spike offers certified solutions for compliance in industrial settings. Read more!

[Read More](#)

Explosion Proof Distribution Boxes

For more information on our range of explosion proof distribution boxes please click on the links above or contact us at ex@warom.ae

[Read More](#)

Crouse-Hinds series CEAG AboX Enclosures brochure

The die-cast aluminum AboX is an ATEX and IECEx certified enclosure featuring built-in Ex-e and Ex-i wiring terminals. With an operating temperature range of -60°C to +80°C @T4, AboX is well-suited

[Read More](#)



Contact Us

For datasheets, pricing, or custom data center infrastructure solutions, please visit:
<https://www.zeldaterblanchephotography.co.za>