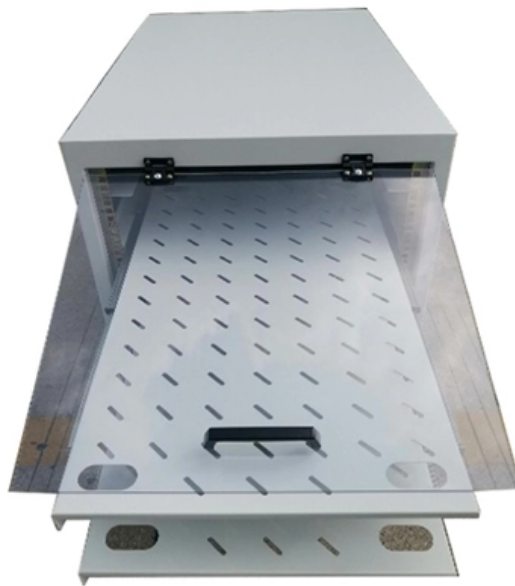




ZTP Thermal & Power

Georgia Outdoor Distribution Box Selection Standards





Georgia Outdoor Distribution Box Selection Standards

How to choose a distribution box?

Determine whether to choose a distribution box for indoor or outdoor installation based on actual needs. Consider the temperature and humidity

[Read More](#)

The installation requirements for the distribution box

Learn how to install a distribution box safely and correctly. Covers wiring, placement, standards, and expert tips for a compliant setup.

[Read More](#)



Key Material Requirements for Distribution Box

The key material requirements for distribution box are used in constructing an electrical distribution box play a crucial role in its durability,

[Read More](#)

Technical Specifications for Outdoor LT Distribution boxes with

Scope: The scope of this specification covers Weather / Vermin proof LT distribution boxes (LTD) with controllers, MCCB, MCB, Bus bars, Contactors, CT's, Energy Meter, LT gas filled fixed capacitor, DC

[Read More](#)

GA DPH Onsite Sewage Manual

Distribution Devices Precast Concrete Distribution Box Construction Criteria: Load Bearing - All precast concrete distribution boxes shall be designed and constructed to provide



[Read More](#)

Georgia Electrical Panel Standards and Specifications

Electrical panel standards in Georgia govern how service entrance equipment, distribution panels, and subpanels are designed, rated, installed, and

[Read More](#)

Chapter 6 Water Supply and Distribution: Georgia State

UpCodes offers a consolidated resource of construction and building code grouped by jurisdiction

[Read More](#)

Georgia State Amendments to the National Electrical Code



Replace all references to the ICC Electrical Code with references to the Georgia State Minimum Standard Electrical Code (National Electrical Code with Georgia State Amendments).

[Read More](#)

Georgia State Minimum Standard Electrical Code 2020

UpCodes offers a consolidated resource of construction and building code grouped by jurisdiction

[Read More](#)

Electrical Distribution Boxes: Types, Uses & Selection

Learn how electrical distribution boxes work, their key components, common types, and how to choose the right enclosure for safe and reliable power distribution.

[Read More](#)



How to choose a distribution box of the right size for a project based

If you're like most electrical professionals, picking the right distribution box for your project can feel like navigating a maze. I've been in those shoes - staring at spec sheets, worrying about

[Read More](#)

Design requirements and standards for low voltage

Key Takeaways Always prioritize safety by following NEC and IEC standards for low voltage distribution boxes. Check voltage and current ratings to

[Read More](#)

Weatherproof Outdoor Distribution Boxes: Key Design Insights



Learn the key design points for weatherproof outdoor distribution boxes to ensure durability, safety, and compliance in challenging environments !

[Read More](#)

Chapter 27 Electrical: Georgia State Minimum Standard

About this chapter: Electrical systems and components are integral to most structures; therefore it is necessary for the code to address their installation and protection.

[Read More](#)

Georgia Electrical Panel Standards and Specifications

Electrical panel standards in Georgia govern how service entrance equipment, distribution panels, and subpanels are designed, rated, installed, and inspected across residential, commercial, and industrial

[Read More](#)



The Source: GDOT Specifications for Contractors

The Source is the Georgia Department of Transportation's online reference for contractors. Within The Source, contractors will find information pertaining to bridges, culverts and retaining walls,

[Read More](#)

UGA Electrical Design Standards Guide

Outlet boxes shall be provided at locations either approved or designated by IT representatives. Outlet boxes shall be recessed mounted in wall with 1 riser

[Read More](#)

mydocs.dot.ga.gov

2. DESIGN PULL BOXES TO MEET OR EXCEED THE TIER LOADING SET FORTH IN SPECIFICATIONS 682 AND 9. 4. 3. LOGO SHALL SAY "ELECTRIC", "GDOT



COMMUNICATIONS

[Read More](#)

ELECTRICAL SERVICE

The materials may not be modified, copied, distributed, transmitted, displayed, performed, reproduced, published, licensed, nor derivative works created, without the expressed, written permission from

[Read More](#)

Requirements And Specifications For Installation Of

Inflammable and explosive environments, explosion-proof distribution boxes should be selected and explosion-proof treatment should be carried out.

[Read More](#)



0801504-Technical Info Hdbk Insides:0801504-Technical

Air-to-Air Heat Exchanger In contrast to the aforementioned techniques, the air-to-air heat exchanger has no moving parts but conveys heat between exhaust and outdoor air streams by means of a

[Read More](#)

What is the Ideal Installation Height for a Distribution Box

General Guidelines for the Installation of Distribution Box Standard Height Recommendations Follow height rules when installing a distribution box. Wall

[Read More](#)

Resolution N10 April 17, 2014 Tbilisi On Approving Network Rules

All data provided by the Declarant to the respective Licensee (including the Dispatch Licensee) is confidential based on current legislation of Georgia until the connection to



the Transmission or

[Read More](#)

Outdoor Electrical Distribution Box Specifications: NEC

This specification guide provides system designers, electrical engineers, and procurement professionals with the technical criteria needed to

[Read More](#)

MINIMUM STANDARDS

In those circumstances, the design of the facilities should meet the needs of the particular situation. Nothing in these minimum standards should be construed as preventing the professional engineer

[Read More](#)



Subject 110-11-1 GEORGIA STATE MINIMUM

Rule 110-11-1-.02 Adoption of Codes The following codes are hereby adopted by the Board of Community Affairs as the Georgia State Minimum Standard Codes for

[Read More](#)

Contact Us

For datasheets, pricing, or custom data center infrastructure solutions, please visit:
<https://www.zeldaterblanchephotography.co.za>