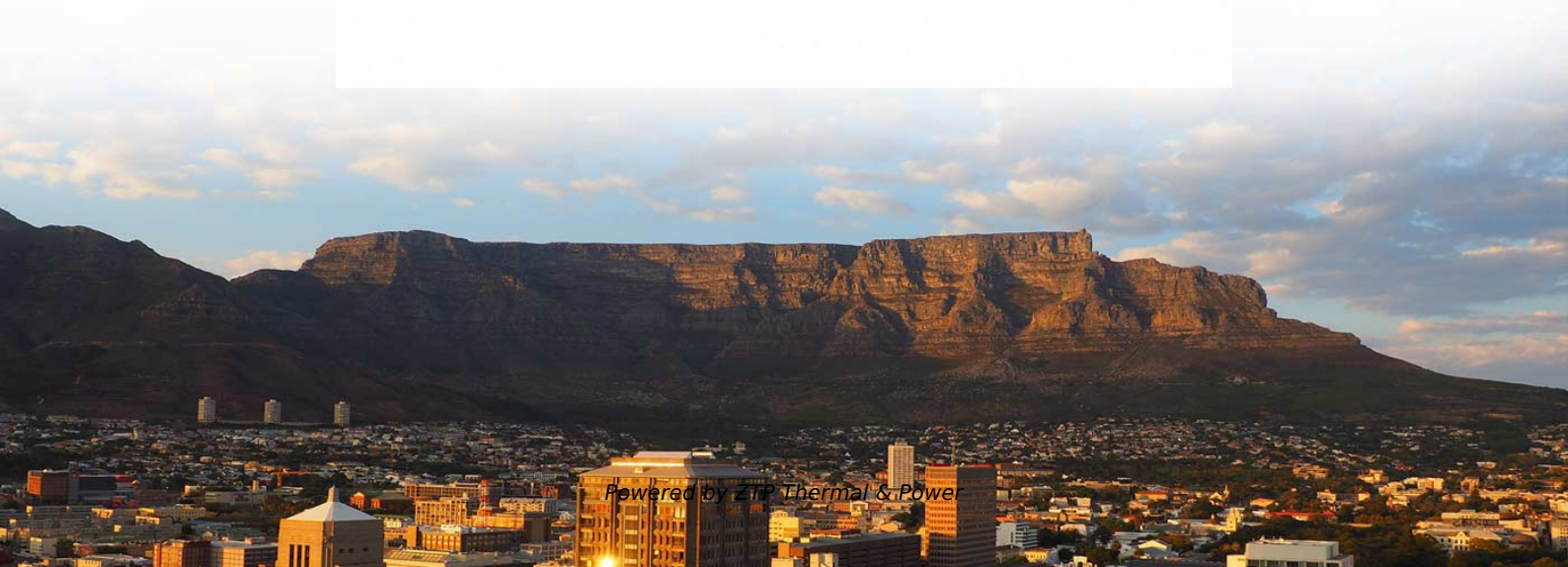
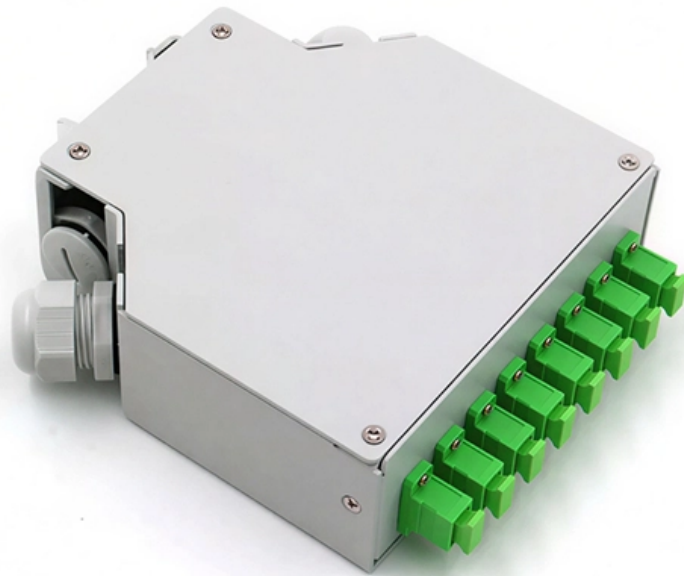


Homeowner s electrical distribution box relocation and wiring replacement





Overview

This process involves disconnecting the existing panel, rerouting electrical wiring, installing a new panel indoors, and ensuring compliance with safety codes. Under most wiring regulations, it is not possible to relocate a consumer unit, extending all the wiring and reinstalling it elsewhere without upgrading the unit itself. Working with electricity in your home can be dangerous, especially if you need to replace the distribution panel and wiring. Relocating an electrical panel is a substantial home improvement project that can vastly improve the safety, functionality, and compliance of your electrical system. Many homeowners consider moving their breaker box for reasons such as home renovations, converting unfinished spaces, or addressing.



Homeowner s electrical distribution box relocation and wiring repla

Distribution Board (DB) Box Installation , Lito Electrical

A DB box, or power distribution box, is an essential component of any electrical installation in Singapore. A good electrical distribution panel is usually made up of

[Read More](#)

Can you relocate a breaker box alone?

Relocating a breaker box, also known as an electrical panel or service panel, is a complex task that requires knowledge and expertise in electrical work. It involves disconnecting the electrical supply,

[Read More](#)



Moving an Electrical Panel (17 Things You Should Know)

You can relocate electrical panels to suit your needs, although removing and reinstalling the breaker box and extending wires where necessary

[Read More](#)

Electrical Panels: Replacement Signs, Maintenance,

The electrical panel--also called a circuit breaker box or service panel--is the central distribution point that connects the primary outside wire to

[Read More](#)

How to Relocate Your Electrical Panel: Steps & Costs

A detailed guide on electrical panel relocation: step-by-step process, cost factors, legal requirements, and pitfalls to avoid for a safe, compliant move.

[Read More](#)



The installation requirements for the distribution box

Learn how to install a distribution box safely and correctly. Covers wiring, placement, standards, and expert tips for a compliant setup.

[Read More](#)

Electrical Panel Replacement Cost: A Homeowner

Old breaker boxes can't keep up with a modern home's electrical usage. Find out the cost to replace electrical panel parts or upgrade.

[Read More](#)

Is it possible to move a consumer unit, how is it done?

Under most wiring regulations, it is not possible to relocate a consumer unit, extending



all the wiring and reinstalling it elsewhere without upgrading the unit itself.

[Read More](#)

From the Ground Up: Electrical Wiring

Read our guide to electrical wiring, covering layout, materials, safety, and planning for a safe, efficient home system.

[Read More](#)

Electrical Switch Box Relocation: A Comprehensive Guide

Conclusion: Moving an electrical switch box can be a practical and necessary task in various situations. By understanding the reasons behind relocation, following a

[Read More](#)



Distribution Box Installation and Replacement Singapore

Expert installation and replacement of distribution boxes, ensuring safe and efficient electrical systems for homes and businesses across Singapore. Contact us.

[Read More](#)

How to Replace the Distribution Panel and Wiring in Your Home

Safely replace the distribution panel and wiring in your home with expert tips on permits, safety, and when to call a licensed electrician.

[Read More](#)

Switchboard & Meter Box Relocation Sydney

Switchboard & Meter Box Relocation Sydney Meter Box Relocation Sydney Next Level Electricians leads the way in the safe relocation of meter boxes or switchboards for the residential and the

[Read More](#)



Electrical Panel Relocation

Whether or not you've considered relocating the electrical panel or breaker box for your home or office, it may be something you need to have done. What kind of

[Read More](#)

Moving an Electrical Panel From Outside to Inside

Moving an electrical panel from outside to inside requires careful planning and professional expertise. This process involves disconnecting the existing panel, rerouting electrical wiring, installing a new

[Read More](#)

****Electrical Panel Replacement: 12 Steps for Safe Upgrade**



Discover our comprehensive 12-step guide to electrical panel replacement. Learn about breaker box upgrades, safety tips, cost considerations, and more for a

[Read More](#)

Electrical Outlet Relocation: A Homeowner's Guide

An electrical outlet relocation project demands meticulous planning and precise execution to ensure electrical codes compliance and safety. A homeowner contemplating electrical work must

[Read More](#)

What You Should Know About Relocating Your

Discover the essential steps and considerations for a successful switchboard relocation. Learn what to expect and how to ensure a smooth transition.

[Read More](#)



How to Move an Electrical Box Safely and Legally

Relocate electrical boxes safely and legally. Expert guide covering required planning, code adherence, and wire management techniques.

[Read More](#)

wiring

There is absolutely no reason to replace all the wiring in the house. Upgrading or moving the service does not require a complete re-wire. Fire is about the only thing that requires a re-wire. If

[Read More](#)

Electrical Panel Relocation Costs: A Practical Price Guide

Homeowners typically pay for panel relocation based on labor, permit requirements,



load calculations, and distance to the new location. The cost is driven by panel size, amperage, existing

[Read More](#)

Consumer Unit Replacement Costs: A Comprehensive

Consumer unit installation is a critical aspect of every home electrical system. Acting as the nerve center, a consumer unit ensures the safe and efficient distribution of

[Read More](#)

Electrical Switch Box Relocation: A Comprehensive Guide

Relocating electrical switch boxes involves working with potentially dangerous electrical components and wiring. It is strongly recommended to seek the

[Read More](#)



Electrical Distribution Board Installation (DB Box /

Need to Install an Electrical Distribution Board? WhatsApp us for Help! WhatsApp Us For Enquiry! There are two main reasons you may need

[Read More](#)

Residential Electrical Panel Relocation

Whether you are renovating, extending your property, or simply making your system safer and more accessible, our Residential Electrical Panel Relocation service ensures everything is carried out to

[Read More](#)

Contact Us

For datasheets, pricing, or custom data center infrastructure solutions, please visit:
<https://www.zeldaterblanchephotography.co.za>