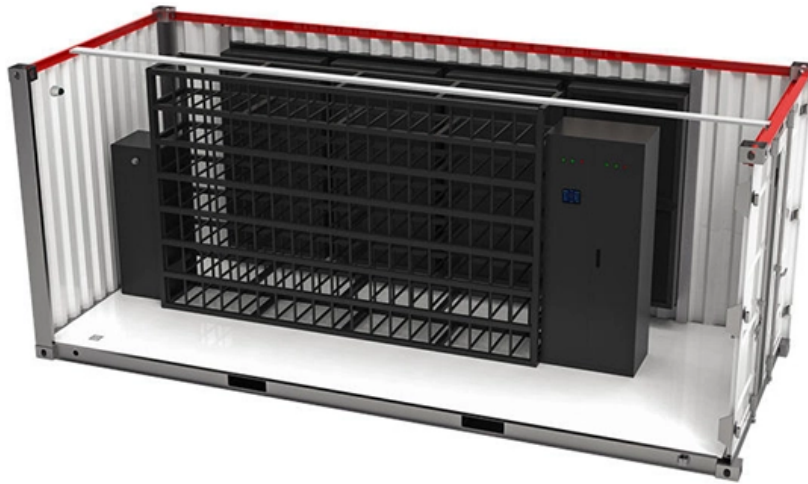


# **Huawei 5626 Fiber Optic Switch**





## Overview

---

Huawei SmartAX MA5626 is a box-type device configurable with a GPON uplink ports and up to 8, 16, or 24 downstream ports for broadband, voip, pots, and Internet access services. This page provides the huawei MA5626 user manual and user guide, including the product description, configuration guide. It supports 5 specifications: 24 ports; 16 ports; 8 ports; 8 ports with power over Ethernet (PoE); 8 ports with reverse PoE. Fiber Optic Connectivity: Designed for efficient data transmission and management within network infrastructures, utilizing GPON and EPON technologies. Huawei MA5626/MA5620-8/16/24GPON/EPON optical fiber OLT access ONU switch equipment.



## **Huawei 5626 Fiber Optic Switch**

---

### **Huawei MA5620 and MA5626 Basic Difference**

Today i will discuss about basic Difference of Huawei MA5620 and MA5626 MDU. The SmartAX MA5620 and MA5626 are industry-leading

[Read More](#)

### **Huawei SmartAX MA5626 Support Guide, Manuals & PDF - Huawei**

SmartAX MA5626 Remote Optical Access Equipment: Access product manuals, HedEx documents, product images and visio stencils.

[Read More](#)



## **For Huawei MA5626-16EPON ONU Access Network Switch with OLT**

For Huawei MA5626-16EPON ONU Access Network Switch with OLT Downlink 16-Port POE SNMP QoS Function for FTTB/FTTX

[Read More](#)

## **SmartAX MA5620 and MA5626**

The SmartAX MA5620 and MA5626 are industry-leading remote multi dwelling units (MDUs) launched by Huawei, which provide broadband services and IP voice services on the Fiber To The Building

[Read More](#)

## **Optical Module Solutions for Huawei S5700/S5720 Series Switches**

When using switches, we may encounter many confusions, such as what types of optical modules are needed for different models of Huawei switches, and how to resolve issues



encountered

[Read More](#)

## **HUAWEI MA5626-16 SmartAX 16 Port GPON MDU**

High quality HUAWEI MA5626-16 SmartAX 16 Port GPON MDU ONU Equipment from China, China's leading product market 16 Port ONU Equipment product, with

[Read More](#)

## **Huawei SmartAX MA5626 FAQs Knowledge Base & FAQ**

SmartAX MA5626 Remote Optical Access Equipment: Access product troubleshooting, FAQ, issues, and solutions.

[Read More](#)



## **MA5626, OSN3500 OSN1500 OSN2500, metro1000 SDH equipment,**

The MA5626 can be used in fiber to the building (FTTB) + LAN scenarios to provide broadband access and voice services for residential and small to medium enterprise users. It can be installed on

[Read More](#)

## **Network Switches , Huawei Enterprise**

Huawei Ethernet Switches Turbocharge your enterprise network with high-performance, high-availability for resilient services and simplified management.

[Read More](#)

## **MA5626/MA5620-8/16/24 GPON/EPON Huawei ONU Switch Equipment Optical**

LazMall Vouchers Electronics Parts & Accessories Network Components Switches MA5626/MA5620-8/16/24 GPON/EPON Huawei ONU Switch Equipment Optical Fiber OLT



Access

[Read More](#)

## **Huawei MA5626 GPON ONU**

Discover our range of Huawei MA5626 GPON ONUs, offering 24 FE ports and advanced features for fiber optic networks. Perfect for MDUs and FTTH deployments.

[Read More](#)

## **SmartAX MA5620 and SmartAX MA5626**

They connect to the optical line terminal (OLT) through GPON uplink ports and connect to PCs by using category-5 cables to provide high-bandwidth broadband, voice, and video services and connect to

[Read More](#)



## **Huawei MA5626-8/16/24PoE operator 100M POE access to new ONU switch**

Huawei MA5626-8/16/24PoE operator 100M POE access to new ONU switch equipment optical fiber.

[Read More](#)

## **Huawei MA5626-24FE GPON ONU price and datasheet**

Huawei SmartAX MA5626 24FE comes with installation material, power cable, subscriber cable GPON Multi-service Access Equipment 1U Height AC powered

[Read More](#)

## **SmartAX MA5626**

SmartAX MA5626 Remote Optical Access Equipment Huawei SmartAX MA5626 is a box-type device configurable with a GPON uplink ports and up to 8, 16, or 24 downstream ports for broadband, voip,



## **Alibaba : Smartax MA5612/MA5620/MA5626 GPON EPON MDU**

The Huawei Smartax MA5612/MA5620/MA5626 Optical Equipment is a versatile fiber optic solution designed for Multi-Dwelling Units (MDU). This device supports GPON and EPON technologies,

[Read More](#)

## **Huawei FTTX+LAN Ma5626 24 Port Smartax Gpon Mdu**

With professional knowledge and experienced services in optic fibers and networks materials, we have provide our clients with premium fiber optic and networks

[Read More](#)

## **09-Smartax Ma5620 and Ma5626-En , PDF , Fiber To**



SmartAX MA5620 and MA5626 The SmartAX MA5620 and MA5626 are industry-leading remote multi dwelling units (MDUs) launched by Huawei, which provide

[Read More](#)

## **Huawei Optical Reverse PoE Olt Equipment Ma5626**

Huawei MA5626 Optical Reverse PoE OLT DeviceProduct DescriptionOptical Network Units (ONUs) with Power-over-Ethernet (PoE) support, comprehensive QoS features including Dynamic Bandwidth

[Read More](#)

## **FTTx+LAN MA5626**

It supports 5 specifications: 24 ports; 16 ports; 8 ports; 8 ports with power over Ethernet (PoE); 8 ports with reverse PoE. It can be used in FTTB + LAN

[Read More](#)



## **MA5626-24FE Datasheet Overview**

Get More Information Do you have any question about the MA5626-24FE? Contact us now via Live Chat or [sales@router-switch](mailto:sales@router-switch) .

[Read More](#)

## **ONU Huawei MA5626 4GE + 4FE POE , Anvimur**

ONU Huawei MA5626 , 1GPON + 4GE (PoE) + 4FE (PoE) Optical Network Units (ONUs) with Power-over-Ethernet (PoE) support, comprehensive QoS features

[Read More](#)

## **FTTx+LAN MA5626**

FTTx+LAN MA5626 The MA5626 is a MDU with passive heat dissipation, which supports local area network (LAN) access. It supports 5 specifications: 24 ports; 16 ports; 8 ports;



8 ports with power

[Read More](#)

## **MA5626-16 GPON Huawei MA5626 MA5620 price and**

MA5626-16 GPON Product Overview The product is an industry-leading remote multi dwelling unit (MDU), which is used on a passive optical network (PON), and

[Read More](#)

### **Contact Us**

---

For datasheets, pricing, or custom data center infrastructure solutions, please visit:  
<https://www.zeldaterblanchephotography.co.za>