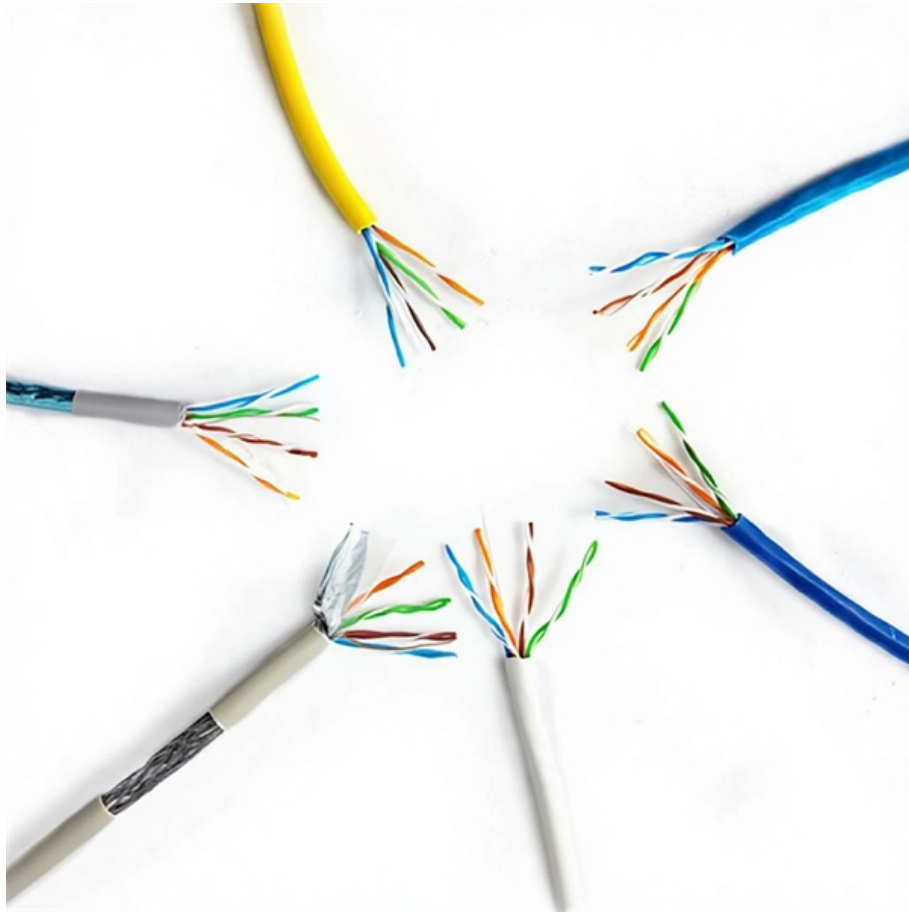


Huijue Aluminum Alloy Cable Tray Width





Huijue Aluminum Alloy Cable Tray Width

Section 17.pdf

3.1 Aluminum Trough type cable tray longitudinal members shall be 4-1/2, 6, 7,8, or 10 deep extruded aluminum channels or I-Beams of 6063-T6 aluminum alloy.

[Read More](#)

Aluminum Cable Tray

What is aluminum (alum alloy) cable tray? Aluminum cable trays (Alum alloy cable trays) are a lightweight yet sturdy system designed to support and organize

[Read More](#)



CableTray Book English

Aluminum cable tray Straight lengths -- Tray bottom types: ladder, ventilated and solid trough Ladder Extra wide aluminum rungs are welded to extruded aluminum I-beam side rails. Every second rung is

[Read More](#)

B-Line series Cable Tray Design Considerations

Available in 3, 4, and 6-inch widths with ventilated or solid bottoms, channel cable tray is ideal for smaller instrumentation cables and cable tray runs involving a small number of cables.

[Read More](#)

Aluminum Alloy Cable Trunking Tray

Aluminum Alloy Cable Trunking Tray, Find Details and Price about Cable Trays Ladder Cable Tray from Aluminum Alloy Cable Trunking Tray - Jiangsu Holdee

[Read More](#)



Cable Tray Dimensions Guide: Standard Sizes, Tray

Explore standard sizes by tray type, understand width and depth limits, and see how to calculate and choose compliant cable tray sizes for real projects.

[Read More](#)

What are the standard requirements, commonly used specifications

Thickness of bridge tray Aluminum alloy cable tray 2019 National Standard stipulates that when the width of the bridge is greater than 800mm, the thickness of the side plate shall be 3.0mm, and the

[Read More](#)



Aluminum Cable Tray

Aluminum Cable Tray systems are lighter than steel cable tray and Certified CSA Cable Tray, UL listed, NEMA and certified. Because of their lighter weight aluminum cable trays are easier

[Read More](#)

Aluminum cable trays

Quick View Powder Coated/Aluminium Alloy Cable Trays FOB Price:US \$1.5 / Meter Min. Order:50 Meters Send Inquiry Video Quick View Ladder Type Tray/Perforated Type Tray/Aluminium Alloy

[Read More](#)

China Aluminum Cable Tray, Aluminum Cable Tray Wholesale,

Enhance your Cable Tray setup with our premium Aluminum Cable Tray. When selecting a cable tray solution, consider load capacity, environmental conditions, and installation trends. Opt for factory



Section 17.pdf

2.3 Husky Trough type tray straight sections shall be 10 -0, 12 -0, 20 -0, 24 -0, or 30 -0 long and shall be of the width indicated on the drawings to provide the planned cable capacity.

[Read More](#)

Cable Management Tray , Huijue Group E-Site

Root Causes Behind Cable Management Failures Three technical factors dominate: 1) Thermal expansion mismatch between tray materials and cables, 2) Inadequate bend radius protection

[Read More](#)



Aluminum Cable Tray: Lightweight & Corrosion-Resistant

Discover the benefits of aluminum cable trays for industrial and outdoor use. Find durable, lightweight solutions with fire resistance and easy installation. Click to explore top-rated

[Read More](#)

What are the standard requirements, specifications and thickness of

Aluminum alloy cable tray 2013 industry standard stipulates that when the width of aluminum alloy cable tray is greater than 150mm and less than or equal to 300mm, the thickness of bridge plate should be

[Read More](#)

Aluminium Cable Trays , EAE Electric

Aluminum Cable Trays & Ladders deliver lightweight, durable solutions. Aluminum Cable Tray manages cables, while Aluminum Cable Ladder carries heavy loads.



Aluminum Alloy Steel Punching Type Cable Tray Cable

Cable Trays Production Process We have 30+ advanced production equipment: Fully automatic forming machine, CNC punching machine, laser automatic cutting

[Read More](#)

CableTray Book English

All calculations and data for AH3-7 and AH4-7 series are based on 42" wide cable tray with rungs spaced on 12" centers with tray supported as simple spans with deflection measured at the midpoint.

[Read More](#)

Cable Tray Technical Guide A practical guide to product



selection and

A practical guide to product selection and installation This guide for engineers and installers has been developed by ABB as a practical reference regarding cable tray characteristics, installation, and

[Read More](#)

Aluminum Cable Tray, Aluminum Ladder Cable Tray

Aluminum cable trays of NewReach are crafted from high-performance materials from durable aluminum alloys including 6063, robust steel Q235, corrosion

[Read More](#)

CableTray Book English

Refer to technical section page A8. Determine the tray series using the NEMA load/ span designations page A14, and sizing cable tray page A21. Select nominal depth and width of tray based on cable

[Read More](#)



Aluminum Alloy Cable Tray is Lightweight to Install

Material: aluminum alloy. Width: 200mm - 800mm. Height: 100mm, 150mm, 200mm. Length: 2000mm, 3000m, 6000mm. Aluminum alloy cable trays have high

[Read More](#)

Aluminum Aluminium Cable Tray, Size: 50 To 1000mm

They also offer the advantages of being light weight (approximately less than 50% that of a steel tray) and maintenance free and since aluminum cable trays are

[Read More](#)

Aluminum Alloy Cable Tray for Corrosion-Resistant Systems



Discover aluminum alloy cable trays that are lightweight, corrosion-resistant, and optimize heat dissipation for safe, long-lasting cable management.

[Read More](#)

Aluminum Steel Cable Tray Standard Sizes Pressed

Q1.What services you can offer? We are manufacturer with a range of electrical and network cable tray systems, you can enjoy the one-stop shopping service from

[Read More](#)

"Aluminum Alloy Cable Tray"

The Aluminum Alloy Cable Tray is a key item within our extensive Cable Tray selection.OEM cable trays are customized for brand specifications, often shared across sectors. Factory direct options come

[Read More](#)



Aluminum Alloy Cable Tray Sizes Explained: Key Specifications,

Below is a detailed breakdown of common aluminum alloy cable tray types, their compositions, key features, and recommended applications.

[Read More](#)

Type of Cable Tray

Cable Tray Materials: Most cable tray systems are fabricated from a corrosion-resistant metal (low-carbon steel, stainless steel or an aluminium alloy) or from a metal with a corrosion-resistant finish

[Read More](#)

T& B® Cable Tray

T& B® Cable Tray - T& B Cable Tray Systems Long-span straight sections require



support only between sections, every 40 ft. (12.2 m) Extruded aluminum alloy construction offers high strength-to-weight

[Read More](#)

What are the standard requirements, commonly used specifications

The cable tray made of aluminum alloy needs to comply with many standards and specifications, and there are many commonly used specifications, such as 50*50mm, 100*50mm, 100*100mm and so

[Read More](#)

Contact Us

For datasheets, pricing, or custom data center infrastructure solutions, please visit:
<https://www.zeldaterblanchephotography.co.za>