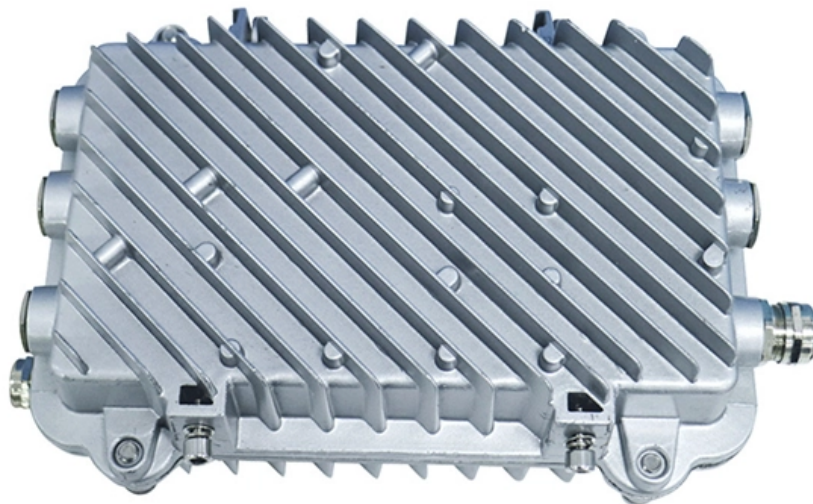


In the numbering of the small busbar kk represents





In the numbering of the small busbar kk represents

KKS Identification Handbook

GE Energy's KKS Identification Handbook outlines the KKS coding system for power plant designation. Learn about process identification and tagging.

[Read More](#)

Bus Bars: Essential Components of Power Distribution

Explore the essential role of bus bars in power distribution and learn about their design and efficiency considerations.

[Read More](#)



Busbar Design: How to Spare Nanohenries

Starting from a single copper plate and going to multilayer busbars, the influence of the external shape of the sheet, of the number and the nature of holes and apertures are considered. Simulations and

[Read More](#)

Solar cell busbar: 3BB, 5BB or 0BB?

Sinovoltacs introduces the technical features, design challenges and research trends and developments of solar cell busbar contacts.

[Read More](#)

KKS Numbering System for Power Plants

Procedure for Plant Identification (KKS Numbering System) - Free download as PDF File (.pdf), Text File (.txt) or read online for free. The document

[Read More](#)



What is Electrical Bus-Bar?

The various types of busbar arrangement are used in the power system. The selection of the bus bar is depended on the different factor likes reliability,

[Read More](#)

Busbar Basics: Understanding the Fundamentals of Electrical

Understanding the basics of busbars is vital for ensuring safe and efficient electrical power distribution. By grasping the core principles of busbar design, material selection, and maintenance, professionals

[Read More](#)

How to Define Switchgear Names? A Detailed Guide to Power



For dual power switching, 101 represents section 1 incoming, 102 represents section 2 incoming. Bus-tie Switch: This is the key to connecting two busbar sections, often defined as "00" or a specific middle

[Read More](#)

Understanding IEC Electrical Schematic Symbols: A

Learn about IEC electrical schematic symbols, including commonly used symbols for circuit components and devices. Explore how these symbols are used in electrical

[Read More](#)

"Busbar Systems"

As the number of busbars increases, so does the flexibility in achieving the desired network configuration. Transfer busbar is the term used for an additional busbar which is connected via a

[Read More](#)



Substation Busbar System Overview , PDF , Electrical

Substation Busbar System Overview The document discusses different types of busbar systems used in substations: 1) Single line diagrams provide a graphical

[Read More](#)

Busbar 101

Research estimates that the market for copper busbar power panels in North America alone will grow by nearly 7.5% annually through 2032, an increase that's driven by several key factors.1. One such

[Read More](#)

Die Multi-Busbar Technologie

Um PV Module noch leistungsstärker und effizienter zu machen, werden ständig neue



Technologien entwickelt. Nicht alle davon schaffen den

[Read More](#)

APPENDIX I: KKS SYSTEM , McGraw-Hill Education

In consideration of the various requirements placed on the identification of plants, sections of plants, and items of equipment in power stations, KKS has three

[Read More](#)

Electrical busbar system

Electrical busbar systems (sometimes simply referred to as busbar systems) are a modular approach to electrical wiring, where instead of a standard cable wiring to

[Read More](#)



What is Electrical Bus Bar? Types, Advantages

Single bus-bar system with sectionalization is uneconomical for small substations. Main and transfer bus-bar system Bus-bars are the copper rods, that

[Read More](#)

Why busbar trunking system is a space saving solution

Why busbar trunking system is a space saving solution worth every penny (on photo: Busbars 3200A in Data Center, Italy; credit: graziadio .uk)

[Read More](#)

A320 Electrical Schematic

The sub-busbars are identified in the same way as the main busbar, but with three identification digits: - the first is identical to the number of the corresponding main busbar, - the two following digits are the

[Read More](#)



What Do Letters and Numbers on a Schematic Mean?

Each symbol, letter, and number on a diagram provides information about the component's type, value, and location. Below are practical steps for

[Read More](#)

Design and installation of low voltage busbar trunking

Cable jointer not required. Busbar trunking systems may be dismantled and re-used in other areas. Busbar trunking systems provide a better

[Read More](#)

Electrical Busbar explained with SLD (Single Line Diagram)

#Busbars are the bars or strips made up of copper, aluminium which are used for the



purpose of power, current distribution in electrical control panels wher

[Read More](#)

Electrical Panel Design in EPLAN: Wiring And Busbars

Learn important components inside electrical cabinets, particularly wiring (conductors) and busbars systems (60mm).

[Read More](#)

What is a Busbar? A Detailed Guide

Single Busbar System A single busbar system is a simple setup in electrical distribution. It consists of a single busbar connected to various

[Read More](#)



KKS HANDBOOK

When the phases are coded (numbered) on multi-line diagrams the numbering shall be done with the AN numbers, i.e. the unit seat in the AN number is used for numbering of the phases (L1, L2, L3, or

[Read More](#)

Busbar Arrangements in Substations , Terminal and

Busbar are the important components in a sub-station. There are several Busbar Arrangements in Substations that can be used in a sub-station.

[Read More](#)

Schematic Symbols Cheat Sheet

We've broken down each symbol, describing what it represents and how it looks, using simple language so that anyone can understand it. We've also

[Read More](#)



Bus Bar Arrangement in Power Station:

Bus Bar Arrangement in Power Station:When a number of generators or feeders operating at the same voltage have to be directly connected electrically, bus-bars

[Read More](#)

Contact Us

For datasheets, pricing, or custom data center infrastructure solutions, please visit:
<https://www.zeldaterblanchephotography.co.za>