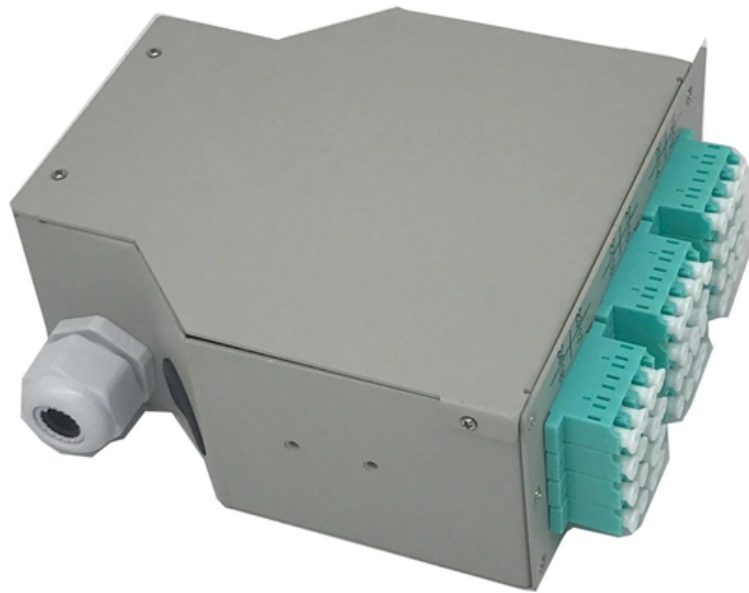


Installation Methods for Horizontal and Vertical Cable Trays





Installation Methods for Horizontal and Vertical Cable Trays

Method Statement installation of Cable Trays and Ladders

This method statement covers the site installation of the cable tray & ladders and the requirements of checks to be carried out.

[Read More](#)

Instrumentation Cable trays Installation in vertical

The article describes a improvement for better life and easy maintenance for instrumentation cable trays for industry. The practices if applied

[Read More](#)



Cable Tray Technical Guide A practical guide to product selection and

The choice of method should be discussed with a local inspector. The best decision may be to extend only the cables, creating a discontinuity in the cable tray.

[Read More](#)

Cable Tray Installation Method Statement

Below is the detailed cable tray installation method statement not only for cable tray but also applicable for GI ladder and trunking for indoor and outdoor applications

[Read More](#)

CABLE TRAY

Figure 4.51 A channel cable tray can be added to an existing cable tray system using this method to add additional approved cabling systems. Refer to the loading information of the existing cable tray

[Read More](#)



How to Install Cable Tray: A Comprehensive Guide to Different Cable

Welcome to our step-by-step guide on installing cable trays! In this video, we'll explore the different types of cable trays available and provide detailed instructions for their installation.

[Read More](#)

Best Practice Guide to Cable Ladder and Cable Tray Systems

This publication is intended as a practical guide for the proper and safe* installation of cable ladder systems, cable tray systems, channel support systems and associated supports.

[Read More](#)



Guide to cable support systems

Fittings can, on the one hand, be used for horizontal or vertical changing of the routing direction or, on the other, to change the height or width of the dimension. Practical examples for this are horizontal or

[Read More](#)

Cable Tray Technical Guide A practical guide to product selection and

A practical guide to product selection and installation This guide for engineers and installers has been developed by ABB as a practical reference regarding cable tray characteristics, installation, and

[Read More](#)

Cable Tray Ladder Trunking Wire Basket Installation

Cable trays are available in different configurations, straight sections are available to route cables in a horizontal or vertical plane. Fittings are available to route cables



[Read More](#)

Mastering Cable Tray Installation , Step-by-Step Guide for a Seamless

Learn how to install cable trays correctly. Get the ultimate step-by-step guide on setting up a seamless and reliable cable management system.

[Read More](#)

What is a Vertical Cable Tray?

What is a vertical cable tray? This guide explains its types (ladder, solid-bottom), benefits for safety & organization, and key applications in data

[Read More](#)



CABLE TRAY SYSTEMS GUIDE

The design and cost of the cable tray is greatly affected by this designation. In order to determine the most appropriate and economical system, a class should be selected that reflects the actual total

[Read More](#)

Efficient Cable Tray Installation Methods for Organized

Discover efficient methods for installing cable trays to organize power, data, and security cables. Explore wall, ceiling, and floor mounting options

[Read More](#)

INSTALLATION GUIDE

Center hung tray supports allow for quicker and easier cable installation by allowing cables to be deposited into tray systems from each side. There is a maximum load capacity per hanger of 318 kg

[Read More](#)



Cable Tray Trunking & Ladder Installation Method for

The purpose of this article is to define the sequence and methodology for the installation of electrical cable trays, cable trunking, cable raceways and boxes,

[Read More](#)

Cable Tray Installation and Cable Handling Method

Efficient cable tray installation and proper cable handling are critical for ensuring the reliability and safety of electrical systems. Adherence to these guidelines is

[Read More](#)

Installation Of Cable In Cable Trays: NEC, Safety



Installation of Cable in Cable Trays ensures proper routing, cable management, NEC compliance, grounding, fire safety, and load capacity.

[Read More](#)

A Guide to Installing and Supporting Electrical Cable Trays

This guide covers the critical steps, from selecting the right electrical cable tray and performing accurate cable fill calculations to managing a safe cable pull through

[Read More](#)

Cable Tray Spacing Standards for Installation and Safety

Key Factors Impacting Cable Tray Spacing Understanding cable tray spacing is key to meeting safety regulations and maintaining system

[Read More](#)



Fiber Cable Tray System

Installation and maintenance of cable tray wiring systems should be performed by a minimum of two qualified technicians. For the purposes of this guideline, a qualified technician is one who is familiar

[Read More](#)

CABLE TRAY INSTALLATION PROCEDURE

On vertical cable trays and on edgewise - horizontal cable trays, each cable shall be fixed with 20mm wide stainless steel strips (two per meter). On horizontal cable

[Read More](#)

CABLE TRAY SYSTEMS GUIDE

FEATURES Supports horizontal/vertical and overhead cable management Durable black or gray powder coat finish Supports UTP or fiber cabling Complete family of accessories includes: wall supports and



[Read More](#)

Contact Us

For datasheets, pricing, or custom data center infrastructure solutions, please visit:
<https://www.zeldaterblanchephotography.co.za>