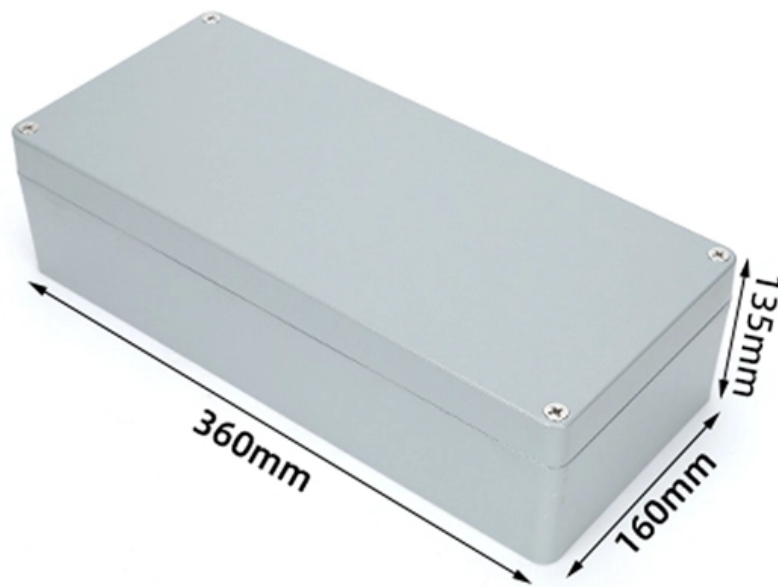


# Integrated sound and light controlled LED power supply





## **Integrated sound and light controlled LED power supply**

---

### **Amazon : Electronics**

Explore a wide range of electronics including streaming devices, headphones, chargers, and smart home gadgets. Find quality products for every need.

[Read More](#)

### **Implementation and Study of Sound Control LED Switch**

So we chose to make and research sound control switches. We hope to use the characteristics of LED and MIC to play the function of sound control switch. The sound control part uses a condenser

[Read More](#)



## How to Choose the Right Power Supply , DigiKey

One of the main drivers for the adoption of LEDs for outdoor lighting is their long lifetime, which enables a 'fit and forget' approach to installation and maintenance. Consequently, it is

[Read More](#)

## Dimmable LED Power Supplies

Magnitude UL Listed Dimmable Power Supplies UL Listed 20-Watt, 40W, 60W, 75W & 96W Dimmable LED drivers/power-supplies perfect for LED tapelights and various 12-24V LED fixtures.

[Read More](#)

## Understanding the Essentials of LED Light Power Supply

Explore the intricacies of LED light power supply and its role in enhancing smart lighting systems.

[Read More](#)



## **Sound controlled lights**

Sound controlled light circuit diagram In building this sound controlled lights circuit, take note that you are dealing with strong voltages and currents. The components

[Read More](#)

## **LED power supplies for LED systems up to 600W**

The TCI MAXI JOLLY SV 70 DALI NFC is a versatile LED driver (1-70 W, 300-1400 mA) with DALI-2, NFC programming, AM dimming, Dim-to-Warm, and RIPPLE FREE technology for flicker-free,

[Read More](#)

## **Leading Australian LED lighting supplier- Integrated Power**



As part of one of Australia's leading energy groups, Integrated Power offers a range of cutting edge LED lighting products and control systems. Our family of

[Read More](#)

## **LED lighting power supplies , ??????????**

External control supports parallel communication, RS-232C communication, and Ethernet communication. The error detection function detects LED disconnection, LED over heating, power

[Read More](#)

## **Understanding the Essentials of LED Power Supply in**

Explore the critical role of LED power supply in smart lighting systems, its benefits, challenges, and future trends.

[Read More](#)



## **How to Choose the Right Power Supply , DigiKey**

One of the main drivers for the adoption of LEDs for outdoor lighting is their long lifetime, which enables a 'fit and forget' approach to installation and

[Read More](#)

## **Smart Lighting**

PowerIntegrations offers a range of integrated high-voltage ICs to power Smart Lighting applications. These ICs work with various communication protocols from

[Read More](#)

## **Powercore**

Powercore integrates a microprocessor-controlled power conversion and regulation stage into LED lighting fixtures, efficiently and accurately controlling output directly from



line voltage.

[Read More](#)

## **LED Driver for Industrial Power Supply Indication**

The MAX22191 provides a simple means for LED power supply indication applications. Its SOT23 package and low power current-setting resistor constitute

[Read More](#)

## **DIY Kit Sound Control LED Flashing Melody Light**

The sound-controlled LED melody light circuit is composed of a power supply circuit, a microphone amplifier circuit, and an LED light-emitting indicator

[Read More](#)



## **LED Lighting & Embedded Power Solutions - Infineon , DigiKey**

Based on your power and efficiency needs, you can find highly integrated ready-to-use solutions at Infineon, ranging from the lowest cost to the highest efficiency in the given power class.

[Read More](#)

## **RGB Music Sound Control LED Light Bar**

Add a colorful and fun touch to your room, parties, events or more with this fun LED lights that dance and change color to the beat of the music. Available in two

[Read More](#)

## **LED power supply design resources , TI**

Design requirements Modern LED power supply designs require: Several options for dimming that are integrated in LED drivers including wireless connectivity. Many drivers programmable for setting the

[Read More](#)



## **Total Integrated Power Solution for Smart Lighting**

To further shrink the size of smart lighting circuits and lower standby loss, a better integrated total power solution is presented in Figure 2. Here, the CV and CC

[Read More](#)

## **LED power supply design resources , TI**

Reference designs that demonstrate ways to implement simple and efficient LED driver power supplies as well as innovative features such as wireless connectivity.

[Read More](#)

## **Contact Us**

---

For datasheets, pricing, or custom data center infrastructure solutions, please visit:  
<https://www.zeldaterblanchephotography.co.za>