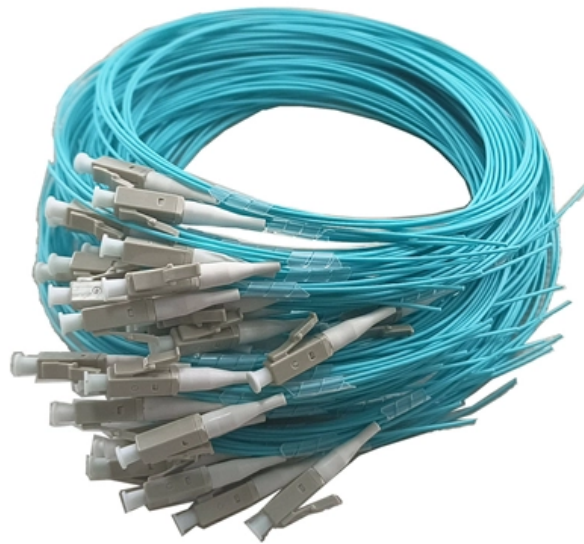


LC300 power interface fixed





LC300 power interface fixed

ADVANCED ICE TOYOTA LC 300 INSTALLATION MANUAL Pdf

View and Download Advanced ICE Toyota LC 300 installation manual online. Toyota LC 300 digital camera pdf manual download.

[Read More](#)

Troubleshooting

The probe current (interface current) is too high. (It can become unstable as the result of discharge.) The probe has not been heated properly. The heater cable and/or high-voltage cable are not connected.

[Read More](#)



LC300 and LC300S

This chapter describes problems you may encounter while using LC300 and LC300S. If you have questions, please refer to related chapters and follow all the suggested solutions.

[Read More](#)

SITRANS LC300 manual

The probe comprises a measurement section and an active shield section that is a fixed length. The probe is the primary system sensor, and it indicates the electrical capacitance value of the

[Read More](#)

The power supply features all relevant connectors of the office sector. The state-of-the-art energy saving technology decreases the power consumption in standby mode (0, 19W) and increases the

[Read More](#)



LC300 LTE CPE

The LC300 CPE is a highly advanced LTE outdoor multi-service product solution specifically designed to meet integrated data, voice and Wi-Fi access needs for residential, business and enterprise users.

[Read More](#)

LC300 GR Airbag Warning Fix: Techstream Reset Guide

Fix LC300 GR airbag warning light with Toyota Techstream: step-by-step reset for 2021-2024 Land Cruiser 300 GR. Tools, DTCs, regional rules, and DIY safety.

[Read More](#)

JUMO QUANTROL LC300 OPERATING MANUAL Pdf



View and Download JUMO Quantrol LC300 operating manual online. Universal PID Controller Series. Quantrol LC300 controller pdf manual download.

[Read More](#)

LC300SFX V3.21

Das SFX-Netzteil LC300SFX V3.21 von LC-POWER bietet ein gutes Verhältnis von Preis und Leistung. Durch den 80mm-Lüfter ermöglicht das Netzteil ein leises und stressfreies Arbeiten, sowohl im Büro

[Read More](#)

Advanced DMX Interface LC-300-INT

Assigns DMX address to CTA, RGB, and RGBW flexible light sources strips RJ45 connector for DMX input Requires a DMX controller Requires additional DL-PS

[Read More](#)



LC300 Local Controller User Manual , PDF , Power Supply

The LC300 Local Controller User Manual provides comprehensive instructions for installation, operation, and maintenance of the LC300 device. It emphasizes safety precautions, outlines the product's

[Read More](#)

SITRANS LC300

SITRANS LC300 user interface comprises the liquid crystal display (LCD), the 6-position rotary switch, and two push-buttons. Select a menu using the rotary switch; select and/or alter a readout or value

[Read More](#)

User manual Lumens LC300 (English)



To reset the Lumens LC300, press the Reset button on the front panel and hold it for 3 seconds. This will reset the device to its factory settings without affecting the network settings.

[Read More](#)

b70.2030.0en.book

The USB interface (socket Mini-B, 5-pole) is labeled on the device with "SETUP" and is located on the case top of the LC100 and on the case bottom of the LC200 and LC300.

[Read More](#)

Siemens SITRANS LC300 Continuous Capacitance Transmitter User

SITRANS LC300 user interface comprises the liquid crystal display (LCD), the 6-position rotary switch, and two push-buttons. Select a menu using the rotary switch; select and/or alter a readout or value

[Read More](#)



Power Problems , LC300 Surging Issue

This surging issue is very noticeable for drivers who expect smooth and consistent power delivery from their vehicle.

[Read More](#)

RICHARDS AUTO LC300 DRIVING LIGHT SWITCH & CANBUS

This video shows how to install Richards Auto's LC300 Spotlight and light bar high beam pickup harness with factory style switch. Available to order on our o

[Read More](#)

LED driver Linear fixed output

Product description · Fixed output built-in LED driver · Constant current LED driver · For luminaires of protection class I and protection class II · Temperature protection as per EN



61347-2-13 C5e ·

[Read More](#)

Fully equipped. For every job.

The new optimized LHStation and LHMobile control panel With the new control panel, programming and operation are intelligently divided between two system parts: The large, fixed monitor unit LHStation

[Read More](#)

JUMO Quantrol LC100/LC200/LC300

The USB interface (socket Mini-B, 5-pole) is labeled on the device with "SETUP" and is located on the case top of the LC100 and on the case bottom of the LC200 and LC300.

[Read More](#)



LC 300 book

The LC 300 user interface comprises the display (LCD), the 6-position rotary switch, and two push-buttons. Select a menu using the rotary switch; select and/or alter a readout or value using the push

[Read More](#)

Siemens SITRANS LC300 Continuous Capacitance Transmitter User

SITRANS LC300 units are pressure tested, meeting or exceeding the requirements of the ASME Boiler and Pressure Vessel Code and the European Pressure Equipment Directive. The serial numbers

[Read More](#)

SUNGROW LC300 USER MANUAL Pdf Download

About this Manual This manual is aimed at providing the detailed product information



and installation operation and maintenance instructions for the LC300 local

[Read More](#)

LC300 iOS 18 Three-Control Fix: Official Steps & Timeline

The LC300 iOS 18 three-control malfunction affects voice, touch, and steering wheel inputs. Official fix requires firmware v2.5.1 + precise re-pairing--details here.

[Read More](#)

LED Driver Linear fixed output Driver LC 50W 250/300/350mA fixC Ip

Product description Fixed output built-in LED Driver Constant current LED Driver For luminaires of protection class I and protection class II Temperature protection as per EN 61347-2-13 C5e

[Read More](#)



Level Measurement

Sels Application SITRANS LC300 is a 2-wire level measurement instrument combining a sophisticated, yet easy-to-adjust microprocessor with field-proven probes. It is available in four versions: rod, rod

[Read More](#)

LC 300 book.book

The probe comprises a measurement section and an active shield section that is a fixed length. The probe is the primary system sensor, and it indicates the electrical capacitance value of the

[Read More](#)

Contact Us

For datasheets, pricing, or custom data center infrastructure solutions, please visit:
<https://www.zeldaterblanchephotography.co.za>