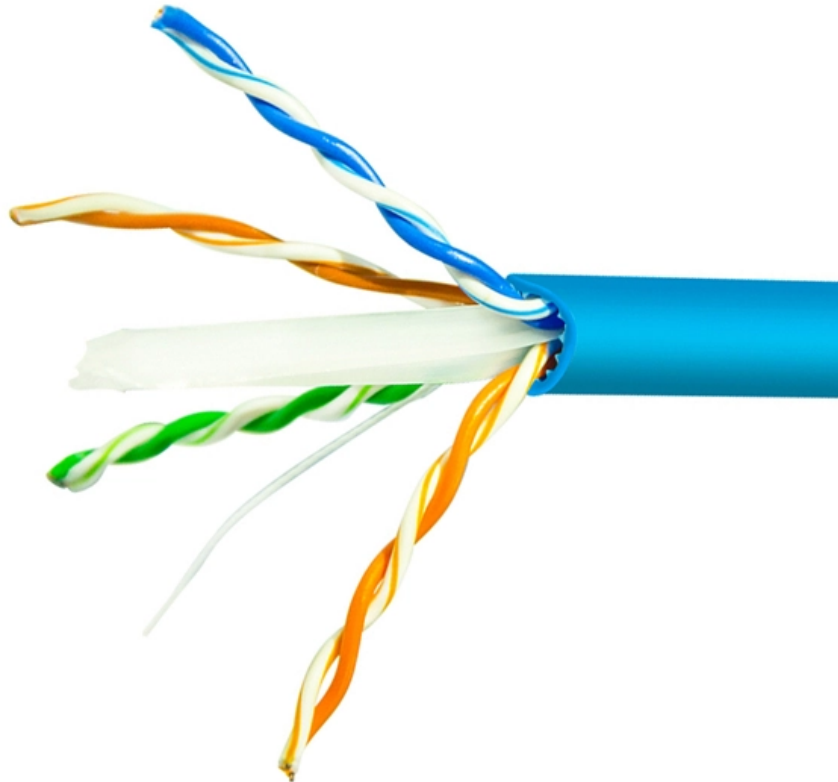




**ZTP Thermal & Power**

# **Lighting Cable Tray Expansion Joint**





## Lighting Cable Tray Expansion Joint

---

### **Cable Tray Expansion Joint Installation: Comprehensive**

Discover best practices for cable tray expansion joint installation to accommodate thermal changes, ensuring structural integrity and compliance with

[Read More](#)

### **Cable Tray Thermal Expansion Guidelines , PDF**

1) Cable trays need expansion joints to allow for thermal contraction and expansion due to temperature changes. The NEC requires expansion joints where

[Read More](#)



## **Cable Tray Technical Guide A practical guide to product selection and**

Cable Tray Technical Guide A practical guide to product selection and installation This guide for engineers and installers has been developed by ABB as a practical reference regarding cable tray

[Read More](#)

## **What is Expansion Joint Cable Tray Installation**

Learn the essentials of expansion joint cable tray installation and how they ensure safe and durable cable tray systems in various environments.

[Read More](#)

## **Design Consideration we follow , powersolution.**

Where earth continuity is an important consideration in a cable tray or ladder system, bonding jumper leads should be used. Cable ladders runs exposed to wide

[Read More](#)



## **Thermal Contraction and Expansion of Cable Tray**

A cable tray system might be influenced by thermal extension and compression, which should be considered during establishment . We at Hutaib Electricals are one of the leading cable tray

[Read More](#)

## **Cable tray expansion joint setting method**

Reasonable setting of cable tray expansion joints is a key link to ensure the safe operation of the cable tray system, and factors such as thermal expansion compensation, vibration absorption

[Read More](#)

Step 2: Determine the gap setting between the cable tray expansion splice joints at the time of the installation to account properly the movement due to thermal expansion/contraction (See Figure 65

[Read More](#)

## **Cable tray (expansion joints) , Information by Electrical Professionals**

NEMA has a free PDF installation guide that gives you the information needed to calculate how many expansion joints are needed. The code never tells you that you need one every so many

[Read More](#)

## **CTI-S65001\_A01**

Step 2: Determine the gap setting between the cable tray expansion splice joints at the time of the installation to account properly the movement due to thermal



expansion/contraction (See Figure 65

[Read More](#)

## **Cable Tray Expansion Joint Features**

Cable Tray Expansion Joint Features This document provides information about expansion junctions and fix/sliding joints for tubular conductors on post insulators.

[Read More](#)

## **T.D.S.**

It is important that cable tray installations incorporate features which provide adequate compensation for their thermal contraction and expansion. The length of the continuous cable tray straight run, and the

[Read More](#)



## **Thermal Expansion and Contraction of Cable Tray**

A cable tray system may be affected by thermal expansion and contraction, which must be taken into account during installation. To determine the number of expansion splice plates you need, decide the

[Read More](#)

## **Managing Thermal Expansion and Contraction in Cable**

Learn how to manage thermal expansion and contraction in cable tray systems with expert tips on expansion joints, guides, and spacing to ensure

[Read More](#)

## **Expansion splice plate for a cable tray run**

A cable tray expansion splice plate for connecting first and second cable tray sections end-to-end is disclosed. The splice plate includes an elongate body having a central section, an upper flange



## **B-Line series Cable Tray Design Considerations**

As an industry leader in cable tray, Eaton offers one of the widest ranges of cable management solutions available in the market today with its B-Line series portfolio. With unmatched quality and service, we

[Read More](#)

## **Electrical cable Tray Installation Details with Support**

Electrical cable Tray Installation Details with Support Systems Comprehensive technical drawing illustrating various cable tray installation details for electrical

[Read More](#)

## **Thermal Expansion and Contraction of Cable Tray**



To determine the number of expansion splice plates you need, decide the length of the straight cable tray runs and the total difference between the minimum winter and maximum summer temperatures.

[Read More](#)

## **Thermal Contraction and Expansion of Cable Tray**

It is important that cable tray installations incorporate features which provide adequate compensation for their thermal contraction and expansion.

[Read More](#)

## **Made in Canada - T& B® Cable Tray expansion joint system**

Meet the people who designed and produced the expansion joint system used on the Champlain Bridge section of the REM, Montreal's new, fully-automated, electric light rail system.

[Read More](#)



## Expansion joint

The CEI EN 61537 standard states that the maximum acceptable longitudinal inflexion is 1/100 of the distance between supports, and that the maximum acceptable transversal one is 1/20 of tray width.

[Read More](#)

## Cable tray (expansion joints) , Information by Electrical Professionals

Is there anywhere else in the NEC book that says cable tray has to have an expansion splice plate every so many feet? Alls I have found is 392.44 which says- Expansion splice plates for

[Read More](#)

## INSTALLATION GUIDE



At the midpoint between two expansion joints the tray should be secured (no longitudinal movement). At all other support locations, the tray is secured to the supports using the expansion guide portion of

[Read More](#)

## **392.44 Expansion Splice Plates.**

2020 Code Language: N 392.44 Expansion Splice Plates. Expansion splice plates for cable trays shall be provided where necessary to compensate for thermal

[Read More](#)

## **Cable Tray Thermal Expansion Guides , TechLine Mfg**

Our thermal expansion guides are recommended to provide longitudinal movement from a fixed point. Two guides should be used and attached to each side rail.

[Read More](#)



## US8534613B2

An expansion joint is disclosed for a cable tray apparatus for a people mover system. An expansion joint is inserted or positioned between a pair of generally rectangular electrical cable trays having first and

[Read More](#)

## Contact Us

---

For datasheets, pricing, or custom data center infrastructure solutions, please visit:  
<https://www.zeldaterblanchephotography.co.za>