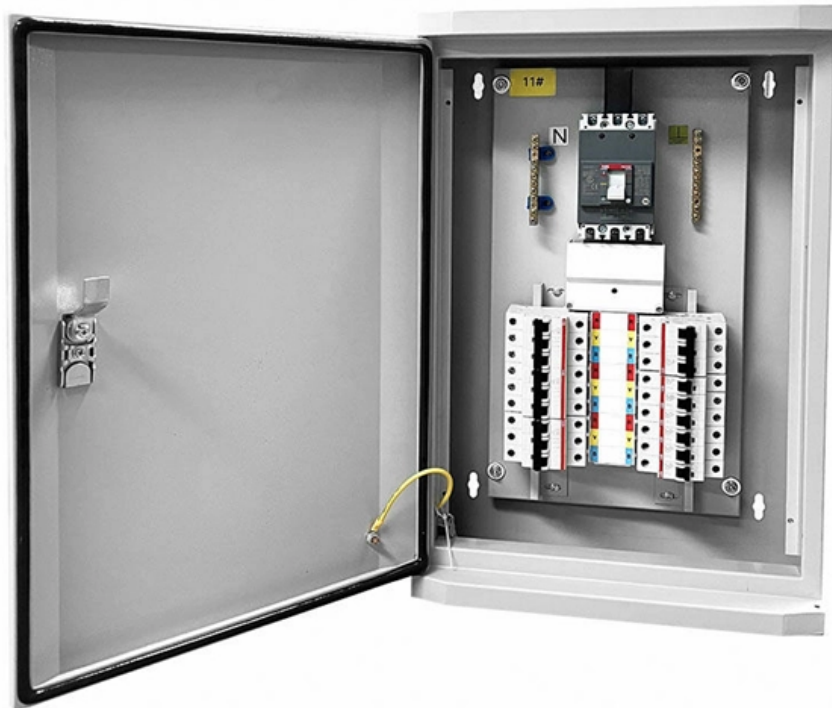


Normal wiring in a household electrical distribution box





Overview

Wiring Direction: Wiring between the main circuit breaker and each branch circuit breaker in the box generally goes on the left, and the wiring out of the distribution box generally goes on the right. House wiring (or residential electrical wiring) refers to the set of conductors, protective devices (circuit breakers/fuses), sockets, switches, light fittings and earthing arrangements installed to distribute electricity within a dwelling. Whether you're building new or updating an older system, the way your wiring is planned and installed affects how safely and efficiently everything runs. It takes the incoming power and safely distributes it to different circuits throughout your building. The Single Phase supply is 220Vac supply, which consists of 2 wires, one wire is Live and the other one is Neutral.



Normal wiring in a household electrical distribution box

Single Phase Electrical Wiring Installation in Home -

Electrical Wiring Color Codes of NEC and IEC Wiring Diagram of single Phase Distribution Board In Home How to Connect Single Phase Loads in a 1-Phase

[Read More](#)

Distribution boards components

Distribution boards (generally only one in residential premises) usually include the meter (s) and in some cases (notably where the supply utilities impose a TT earthing system and/or tariff

[Read More](#)



Simple House Wiring Diagram: A Step-by-Step Guide

Electrical wiring is an essential aspect of any house construction or renovation project. It involves the installation of a network of wires that connect various

[Read More](#)

House Distribution Board » Wiring Diagram

A house distribution board is a vital component of any electrical system. By understanding the components of a house distribution board,

[Read More](#)

Electrical Wiring 101: A Beginner's Guide to House Wiring

This often occurs when the wire gauge is too small for the load or when connections add excess resistance. Key Takeaways on Electrical Wiring

[Read More](#)



The installation requirements for the distribution box

Learn how to install a distribution box safely and correctly. Covers wiring, placement, standards, and expert tips for a compliant setup.

[Read More](#)

31 Common Household Circuit Wirings You Can Use

Household Circuit Wirings The circuit wirings in this article show the most common wiring variations for typical electrical devices. Most new wiring you

[Read More](#)

From the Ground Up: Electrical Wiring

Read our guide to electrical wiring, covering layout, materials, safety, and planning for a



safe, efficient home system.

[Read More](#)

Wiring of the Distribution Board From Energy Meter to

In the fig below for single phase electric home supply installation and wiring of a distribution board, you may see the the single phase electric supply (230V AC

[Read More](#)

How a Home Electrical System Works

Some Components of a Home Electrical System © Don Vandervort, HomeTips Electricity arrives at your house from your local utility company by a

[Read More](#)



Your Home Electrical System Explained

Electrical wiring is a tighter system, a more closed system. Wires: hot, neutral, ground: To understand the function that different wires in a circuit play, consider first our use of terms. Because a house is

[Read More](#)

Understanding Your House's Electrical Panel: A Visual

Understanding the electrical panel in your house is essential for homeowners to ensure the safety and functionality of their electrical systems. The electrical panel,

[Read More](#)

House Distribution Board Wiring Diagram

The diagram of the distribution board's wiring shows exactly how each circuit is wired and connected. It also includes any additional components,

[Read More](#)



House Wiring - Definition, Details, Working, Diagram,

House wiring is the invisible but essential infrastructure that brings electricity safely to our homes. The diagram shows a simplified flow from supply

[Read More](#)

How to Wire a Home Distribution Box

In this video, we'll walk you through the process of wiring a home distribution box with a detailed connection diagram. Whether you're an electrician

[Read More](#)

Home Electrical Wiring , Basic Home Wiring Plans and

The home electrical wiring diagrams start from this main plan of an actual home which



was recently wired and is in the final stages. These links will take you to

[Read More](#)

Basic Electrical Parts & Components of House Wiring

Learn how 9 basic electrical parts often seen in your household circuit. See how Fuse, Trip, Main Switches create the final house wiring circuit together.

[Read More](#)

Brief Introduction To The Installation Method Of

3. Before installing the household distribution box, ensure the completion of the purchase, and then measure the working voltage and rated

[Read More](#)



House Distribution Board Wiring Diagram

That's why having a clear, detailed diagram of your home's distribution board wiring is essential. A distribution board (also known as a

[Read More](#)

Electrical Wiring, House Wiring or Home Wiring

Above is the simplest electrical wiring system for the Fans, Bulbs and outlets. The same wiring system can be used for the Exhaust fans, TV, and other

[Read More](#)

Household Electrical Wiring: A Comprehensive Guide

This guide covers the basic components of household wiring, common circuits, standard color codes, and important safety measures to follow when

[Read More](#)



House Wiring Diagram of a Typical Circuit

The image below is a house wiring diagram of a typical U.S. or Canadian circuit, showing examples of connections in electrical boxes and at the devices mounted in them.

[Read More](#)

Distribution Box Wiring Steps

?Wiring Direction?: Wiring between the main circuit breaker and each branch circuit breaker in the box generally goes on the left, and the wiring out of

[Read More](#)

Distribution Box Installation: A Complete Guide to Safe

The distribution box, often referred to as a breaker box, fuse box, or electrical panel, is a



critical component of any electrical system. It acts as the central hub for

[Read More](#)

House Wiring - Definition, Details, Working, Diagram,

Definition House wiring (or residential electrical wiring) refers to the set of conductors, protective devices (circuit breakers/fuses), sockets, switches,

[Read More](#)

Home Wiring Guide

The consumer unit or commonly known as fuse box is the heart of a home wiring installation. It is usually mounted near the energy meter. A modern consumer unit

[Read More](#)



How to Install a Cable Distribution Box Safely and

In modern electrical systems, cable distribution boxes (also known as electrical distribution boxes or distribution boxes) play a crucial role as the key

[Read More](#)

Electrical Wiring, House Wiring or Home Wiring

These live and Neutral wires come from the distribution transformer to the energy meter and then directly connected to the main distribution board

[Read More](#)

Discover Europe's digital cultural heritage , Europeana

Hier sollte eine Beschreibung angezeigt werden, diese Seite lässt dies jedoch nicht zu.

[Read More](#)



Essential Guide to Home Distribution Wiring Systems

Understanding how to effectively distribute electricity in a home is crucial for both safety and functionality. One of the key components in this system is the Distribution Wire for House, which

[Read More](#)

Contact Us

For datasheets, pricing, or custom data center infrastructure solutions, please visit:
<https://www.zeldaterblanchephotography.co.za>