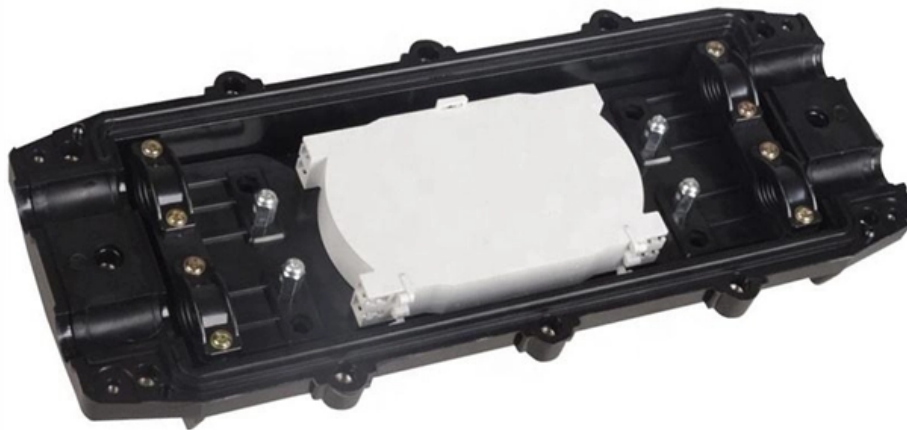


# **PAM4OLT Optical Line Terminal Test Report**





## **PAM4OLT Optical Line Terminal Test Report**

---

### **What is an Optical Line Terminal? - OLT Working Principle**

In optical fibre technology, one of the most widely used devices is an optical line terminal, also called OLT.

[Read More](#)

### **What is OLT (Optical Line Terminal)? Types, Features**

The full form of OLT is optical line terminal, which is a device used to connect the optical fiber and transfer signals. It's an important part of PON in FTTx.

[Read More](#)



## Installation Guide

Installation Guide DeltaStream GPON Optical Line Terminal About this Installation Guide  
This Installation Guide describes the hardware characteristics, installation methods and the points

[Read More](#)

## US8805183B2

G01M11/30 -- Testing of optical devices, constituted by fibre optics or optical waveguides  
G01M11/31 -- Testing of optical devices, constituted by fibre optics or optical waveguides with a light emitter and a

[Read More](#)

## How to configure Optical Line Terminal (OLT) and Omada Switch with

This Article Applies to All GPON OLT Products and all Omada Switches with optical ports.  
1. Application Scenario An apartment wants to use the XM60A to enable Omada



equipment to

[Read More](#)

## **Fiber Optic System Testing Tutorial**

The test configuration depicted in Figure 3 includes a test source on one end (which generates the light signal), and a test meter on the opposite end (which receives the light signal).

[Read More](#)

## **White Paper on 50G PON Technology V2.0**

The all-optical network built upon 50G PON can be extended to all terminals in the mine to provide stable signal transmission. The types of terminals include sensor information collection, video

[Read More](#)



## **A PON testing strategy , Kingfisher International**

This document discusses installation testing for the build phase of a typical FTTH Passive Optical Network (PON) cable plant using a connectorized splitter with

[Read More](#)

## **10G Burst Mode Bit Error Ratio Tester rBT1250, 10G rBT1250**

Semight rBT1250 is specially designed for optical line terminal (OLT) testing of passive optical network (PON) applications, supporting 1.25G EPON, GPON, 2.5G XGPON, Combo-PON, 10G EPON and

[Read More](#)

## **PAM4 test setups vary with applications**

That's two signals with four potential levels, resulting in 16 possible combinations of those two signals. That gives us a coherent 16-QAM signal which



## **LANscape Solutions Recommended Fiber Optic Test Guidelines**

launch cords is necessary to ensure reliable test results. All launch cords and adapters need t be clean and free of defects prior to and during testing. It is highly recommended that reference-gra

[Read More](#)

## **Optical Line Terminal**

The Optical Line Terminal (OLT) is a generic name for the electronics that sends and receives the laser light to/from the FTTH fiber network. It is sometimes referred to

[Read More](#)

## **Test Specification for 800 Gbit/s PAM4 Optical Module at 100**



## Gbit/s

The specification is designed for 800 Gbit/s PAM4 optical modules operating at 100 Gbit/s per lane, detailing test procedures for optical and electrical interfaces, power consumption, and both

[Read More](#)

## Optical Line Broadband

ScopeThe present document contains Indian Telecom Security Assurance Requirements (ITSAR) to the stand-alone OLT (Optical Line Terminal), a passive optical network Core element with a

[Read More](#)

## Guide to Optical Line Terminal (OLT) Classifications:

In modern communication networks, optical line terminal (OLT) is the core device to realize point-to-multipoint (P2MP) in passive optical network (PON)

[Read More](#)



## **What is OLT and Why is it Important in Fiber Networks**

What is Optical Line Terminal (OLT)? An OLT is the main device in fiber networks, converting signals and managing data for fast, stable internet

[Read More](#)

## **FTTH Network Testing: Real Applications using the OLTS Method**

Mario Simard, Product Manager, Optical Business Unit The purpose of any fiber-optic network is to perform high-speed, error-free data transmission. Adequate testing during network installation

[Read More](#)



## **025\_Optical\_Loss\_Test\_Set\_U\_V\_05\_2025**

An Optical Loss Test Set always consists of two components: an Optical Light Source (OLS) and an Optical Power Meter (OPM). The OLS injects a defined optical signal into the fiber at a specified

[Read More](#)

## **Automated End-to-End PON Fiber Test**

This document describes how to automatically test the physical layer of a passive optical network (PON) from the central office (CO). This approach reduces provisioning time, improves quality of service

[Read More](#)

## **PON Network Testing , EXFO**

Testing data from the optical network terminal (ONT) can be challenging. Upstream signals from the ONT are only active when receiving a

[Read More](#)



## **BROADBAND NETWORKS Keeping The Lights On**

INTRODUCTION Cable operators worldwide are deploying passive optical networks (PON), realizing high-capacity, low latency performance with low maintenance costs. Although PONs are essentially

[Read More](#)

## **Optical LAN Testing Recommendations Part 2: Testing,**

Use the PON management system to validate power levels reported by optical network terminal (ONT) after installation, or use a PON power meter to

[Read More](#)

## **OLTS: Optical Line Termination Systems Guide**



These dual-ended instruments assess length, optical return loss, and validate continuity, providing accurate and reliable information for technicians

[Read More](#)

## **Test Procedures when Trouble-shooting an Live (in**

1. Use an ONT (Optical Network Terminal) / ONU (Optical Network Unit) Tester to determine if the ONT/ONU at the subscriber's end is responding to downstream

[Read More](#)

## **Guide to Optical Line Terminal (OLT) Classifications: Detailed Types**

In modern communication networks, optical line terminal (OLT) is the core device to realize point-to-multipoint (P2MP) in passive optical network (PON) architecture. The OLT is

[Read More](#)



## 025\_Optical\_Loss\_Test\_Set\_U\_V\_05\_2025

Optical loss test set in fiber optic expansion - What matters is what arrives Various measurement techniques are used in fiber optic deployments--one of them is the Optical Loss Test Set (OLTS). It

[Read More](#)

### Contact Us

---

For datasheets, pricing, or custom data center infrastructure solutions, please visit:  
<https://www.zeldaterblanchephotography.co.za>