



ZTP Thermal & Power

# Rooftop Balcony Electrical Distribution Box

## Pre-Terminated Patch Panel



Standard 19" width



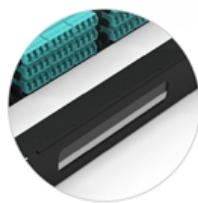
Max 144 fibers in 1U



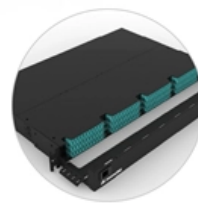
MPO/Fusion Dual-Purpose



Removable Cable Management Tray



Transparent Front Cover



High-Quality Matte Coated Steel





## **Rooftop Balcony Electrical Distribution Box**

---

### **Outdoor Receptacle Boxes , Deck Outlet Covers , TayMac**

Discover TayMac's outdoor receptacle boxes, designed for durable and weatherproof performance.

[Read More](#)

### **WM XFB2GRRGY OUTDOOR ROOFTOP BOX W/ , Cooper Electric**

The Outdoor Rooftop Box is an innovative solution that provides convenient access to power on raised rooftop deck environments. Install power access anywhere along a deck's surface. This rooftop box

[Read More](#)



## **210.52(E)(3) Outdoor Outlets. Balconies, Decks, and**

210.52 (E) (3) Balconies, Decks, and Porches. Balconies, decks, and porches that are accessible from inside the dwelling unit shall have at least one receptacle

[Read More](#)

## **Legrand's Outdoor Rooftop Box**

Legrand's outdoor rooftop box provides access to power on raised rooftop deck environments. It is designed to be installed flush alongside rooftop pavers and

[Read More](#)

## **Rooftop solar power**

A rooftop solar power system, or rooftop PV system, is a photovoltaic (PV) system that has its electricity -generating solar panels mounted on the rooftop of a

[Read More](#)



## **Surface mounted distribution box, IP 65 - Distribution box**

Distribution box, surface mount, transparent door, N/PE rail 1×4 mod, H×W×D=210.3×142.8×99.5mm, IP65,1000 VAC, 1500 VDC

[Read More](#)

## **Key Points Of Installation And Collocation Of Distribution Box In**

Distribution box and switch box shall be made of iron plate or high-quality insulating material, and the thickness of iron plate shall be greater than 1.5mm The electrical equipment in the distribution box

[Read More](#)

## **Balcony Solar: An Engineer's Definitive Guide (Safety,**



Dream of powering your apartment with the sun? As a systems designer, I'll show you how to do it right. The definitive guide to balcony solar,

[Read More](#)

## **Metal electrical distribution box with IP65 protection for**

Size (height x width x depth): 500 x 300 x 200 mm. Distribution box made of 1.2mm thick steel and painted in RAL 7035 gray. 2mm thick galvanized steel sheet for

[Read More](#)

## **RJ Solar Rooftop Junction Box , nVent POWER-UTILITIES**

The RJ rooftop junction box with flashing provides a safe, secure, and NEMA 4X watertight solution for the Solar installer to penetrate the roof for attic runs and

[Read More](#)



## **IP65 Project Box Outdoor Electrical Cabinet**

E-abel's rainproof outdoor IP65 electrical cabinet or project box is manufactured basing on AE series or ES series with standard structure design but with roof top design and cooling system. We could

[Read More](#)

## **Requirements And Specifications For Installation Of**

Inflammable and explosive environments, explosion-proof distribution boxes should be selected and explosion-proof treatment should be carried out.

[Read More](#)

## **Distribution Box: Types and Functions , Axis-Electricals**

A distribution box ensures that electrical supply is distributed in the building, also known as a distribution board, panel board, breaker panel, or electric panel.



## **Waterproof Outdoor Electrical Enclosures, junction**

Delvalle leader in outdoor enclosures, junction boxes, tropical resistant, Fast delivery all over world. Order it now and save money!

[Read More](#)

## **Outdoor Waterproof Power Distribution Box**

Designed for switchboards and electrical panels, this robust enclosure ensures maximum protection against harsh weather conditions and environmental factors.

[Read More](#)

## **Convenient Access to Power on Rooftop Applications**



The box is designed to be installed flush alongside rooftop pavers and features a hinged top cover that allows access to 2-gangs of devices. The internal outlet box can be rotated upwards to

[Read More](#)

## **Outdoor Rooftop Box, Unwired, Black Cover**

The Outdoor Rooftop Box is an innovative solution that provides convenient access to power on raised rooftop deck environments. Install power

[Read More](#)

## **The ultimate choice for roof-top power installations**

When used with a standard roof curb, the ElectraPORT pedestal offers an engineered solution for mounting electrical disconnect boxes with any rooftop installation, providing a rigid portal for both

[Read More](#)



## **Outdoor Electrical Boxes , Durable Exterior & Junction**

Designed to meet NEMA and IP ratings, our waterproof junction boxes are ideal for outdoor use but versatile enough for indoor applications too. Choose from a

[Read More](#)

## **Outdoor Rooftop Box**

Provide power access anywhere along a deck surface, perfect for outdoor events or furniture needing access to power and eliminate the need for extension cords along the decking surface - providing

[Read More](#)

## **Outdoor Rooftop Box, Unwired, Black Cover , Outdoor**



The Outdoor Rooftop Box is an innovative solution that provides convenient access to power on raised rooftop deck environments. Install power access anywhere

[Read More](#)

## **Outdoor Rooftop Boxes , Outdoor Power , Wire and Cable Management**

Available in unwired and prewired configurations. Perfect for raised rooftop decks and patios.

[Read More](#)

## **Outdoor Rooftop Box , Legrand**

The Outdoor Rooftop Box provides convenient access to power on raised rooftop deck installations and eliminates the need for extension cords along the decking.

[Read More](#)



## Legrand Reveals Outdoor Rooftop Box

Easily expand outside and add power access anywhere on rooftops with the Legrand Outdoor Rooftop Box. It also provides greater flexibility in power

[Read More](#)

### Contact Us

---

For datasheets, pricing, or custom data center infrastructure solutions, please visit:  
<https://www.zeldaterblanchephotography.co.za>