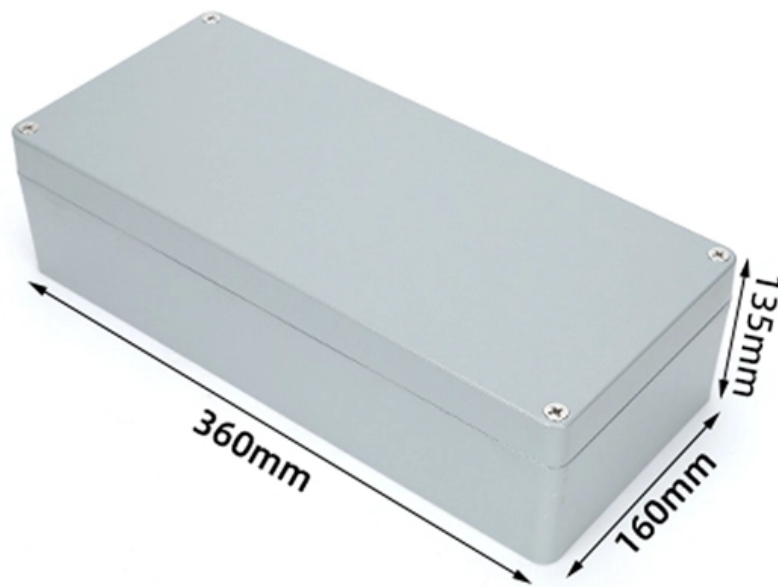


# Safety Supervision Bureau Relay Protection





## Safety Supervision Bureau Relay Protection

---

### Protective relay

Electromechanical protective relays at a hydroelectric generating plant. The relays are in round glass cases. The rectangular devices are test connection blocks,

[Read More](#)

### PROTECTIVE RELAY TESTING

A comprehensive testing program should simulate fault and normal operating conditions of the relay. Acceptance testing, commissioning, and startup will include control power tests, current transformer

[Read More](#)



## **Trip circuit supervision relay SPER 1C2**

The trip circuit supervision relay SPER 1C2 is used for supervising important control circuits, such as, the circuit-breaker and disconnector control circuits and signalling circuits in power electrical

[Read More](#)

## **SACI RSN Supervisory Relay: Accuracy and Protection**

Built with exceptional precision and robust construction, this relay is ideal for demanding applications such as the protection of generator sets, motors, and electrical circuits.

[Read More](#)

## **Supervision & Signalling**

While Supervision relays are applied for the supervision of trip circuits and trip coils of circuit breakers, Signalling relays are used to provide a visual indication of the

[Read More](#)



## **PROTECTION RELAYS**

Siemens Reyrolle products meet the comprehensive protection requirements of industrial applications, from overcurrent protection and voltage control to auxiliary

[Read More](#)

## **Reyrolle Intertripping, Interposing, Supervision and Special Purpose Relays**

Description Type XR relays are developments for specific applications from the AR relay range. They are electro-mechanical relays with a consistent positive action, a long service life, and comply with

[Read More](#)

## **Trip circuit supervision relay**



The supervision relay type TCS is intended for a continuous supervision of circuit breaker trip circuit and to give an alarm for loss of auxiliary supply, faults on the trip-coil or its wires independent of the

[Read More](#)

## **Trip Circuit Supervision , PDF**

Actually, isolating a faulty section is the duty of all the circuit breakers in a protection zone, The opening statement could have been written as Despite the protective

[Read More](#)

## **Protection Relay Testing For Commissioning SWP: 1. Purpose and**

Protection systems are made up of many different types and makes of relays however the relays can be grouped by the function they perform. This SWP covers the individual tests required on a protection

[Read More](#)



## **Protection Relay and Supervisory Control Systems (MELPRO Series)**

In order to keep the electricity supply stable, protection relays quickly detect possible faults and faulty sections in the power network. This makes it possible to limit blackout area and return power to it in

[Read More](#)

## **MONITORING RELAY Trip circuit supervision relay TCS Product**

Product Guide -- Continuous supervision of critical circuits like breaker trip circuit and master trip relay coil independent of the position.

[Read More](#)

## **Trip Circuit Supervision Relay: Working Principle,**



This comprehensive guide explores everything you need to know about trip circuit supervision relays, their working principles, applications, and

[Read More](#)

## **Trip Circuit Supervision (ANSI 95) Explained , PDF**

The document discusses trip circuit supervision (95) protection and how to implement it using numerical relays. It describes trip circuit supervision as

[Read More](#)

## **User's Manual and Technical Descriptio**

To prevent the supervision relay from providing spurious alarm signals, for instance, at circuit breaker operation, the measuring current of the control circuit is routed so as to bypass the break contact

[Read More](#)



## **Trip Circuit Supervision TCS Relay Working Function**

Trip circuit supervision monitors and indicates the healthiness of the breaker's tripping circuit and indicates whether or not the circuit breaker will trip at

[Read More](#)

## **Power System Protective Relays: Principles & Practices**

Protective relays and devices have been developed over 100 years ago to provide "lastline" of defense for the electrical systems. They are intended to quickly identify a fault and isolate it so the balance of

[Read More](#)

## **Monitoring devices**

Under this category, ABB provides trip circuit relays for continuous monitoring of circuit-breaker trip circuits and other essential control circuits. However, ABB has products for



both substation wide

[Read More](#)

## **Protection Relay Testing and Commissioning**

Since type testing of a digital or numerical protection relay includes software and hardware testing, the type testing procedure is very complex and more challenging than a static or electromechanical relay.

[Read More](#)

## **Trip circuit supervision relay (TCS)**

A Trip circuit supervision relay (TCS) is an intelligent monitoring device that continuously evaluates the integrity of circuit breaker trip circuits.

[Read More](#)



## **Trip circuit supervision relay - Diagram, Working Principle**

If the supervision relay is operated or triggered, it should attend immediately by Protection Engineer. trip circuit supervision relay Diagram & Working Principle of Trip Circuit Supervision Relay

[Read More](#)

## **Reyrolle AC/DC Supervision Relay**

This document is not a complete index of all safety measures required for operation of the equipment (module or device). However, it comprises important information that must be followed for personal

[Read More](#)

## **ABB TCS Auxiliary Relay: Understanding Trip Circuit**

Master trip circuit supervision with our detailed guide on ABB TCS Auxiliary Relay, ensuring optimal operation and safety in your system.



[Read More](#)

## **Practical handbook for relay protection engineers , EEP**

The most important requisite of the protective relay is reliability since they supervise the circuit for a long time before a fault occurs. If a fault then

[Read More](#)

## **Reyrolle Intertripping, Interposing, Supervision and Special Purpose**

o The supervision relays are designed to monitor DC voltages. They have a low operating current, specific settings, time delayed drop-off, a mechanical flag indicator which shows on de-energization

[Read More](#)



## Protection relays

Numerical relays are based on the use of microprocessors. Numeric relays are programmable. Most numerical relays are also multi-functional.

[Read More](#)

## Contact Us

---

For datasheets, pricing, or custom data center infrastructure solutions, please visit:  
<https://www.zeldaterblanchephotography.co.za>