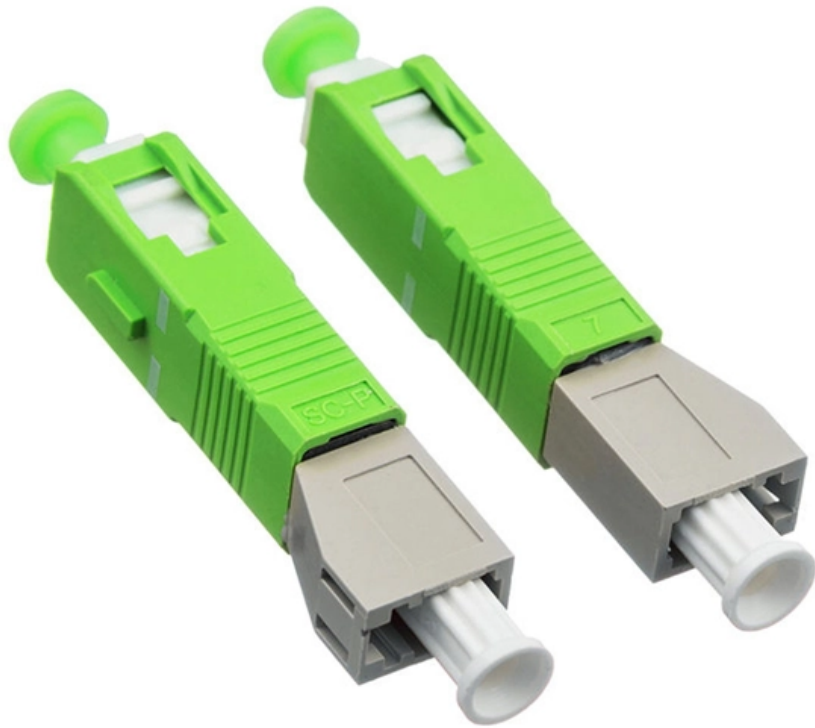


# Sep optical port module





## Overview

---

The SEP 100G QSFP28 Optical Transceiver Module is designed for use in 100GBASE Ethernet throughput up to 40km over single mode fiber (SMF) using a wavelength of 1310nm via duplex LC connector. Important: The end user must ensure suitability of both the optical fiber and the laser transceiver on the other end. This topic describes the encapsulation types of optical modules on WDM products Small form-factor pluggable (SFP) optical modules are compact, hot-swappable, low-speed optical modules. They comply with the specifications defined in the multi-source agreement (MSA) and support synchronous optical. The EDGE8® port breakout module enables conversion from a single 4-channel parallel optic port (such as 40GSR4, QSFP) to a patch panel representation with four LC duplex ports for use in a main distribution area. When used with Intel® Ethernet Network Adapters with QSFP28 connectivity, these optics provide interoperability and secure connections for virtualization, high-speed networking, and consistently reliable performance.



## Sep optical port module

---

### **What is an SFP Optical Module? The Complete Guide to**

Understand the core function, compare data rates (1G to 25G), learn critical compatibility rules, and follow our 5-step checklist for selecting the perfect

[Read More](#)

### **The Difference Between RJ45 Port Module And Optical**

Warm tip: If the RJ45 port module encounters obstruction when pushing in, please do not force to push in, you can re-insert or replace the RJ45

[Read More](#)



## **What Is an SFP Module? -- Complete Guide to SFP, SFP+ & SFP28**

Learn what an SFP module is, how it works, its types, specifications, compatibility, and use cases in modern networks, including updated standards and trends for 2026.

[Read More](#)

## **The Key External Components of Optical Modules**

An optical module serves as the backbone of modern fiber-optic communication. Its appearance often resembles a compact rectangular device,

[Read More](#)

## **What Is a SEP Port and Why This 2.5Gb SFP Media Converter**

Sep port, often mistaken for SFP port, lacks formal recognition in networking standards. This article clarifies the confusion and explains how a 2.5Gb SFP media converter resolved real-world issues

[Read More](#)



## **What Is an SFP Module? Complete Guide**

SFP modules, or Small Form-factor Pluggable modules, are essentially the workhorses of modern networking. They facilitate data

[Read More](#)

## **What Is an SFP Optic Module and How Does It Work**

SFP optic modules convert electrical to optical signals for fast, long-distance data transfer. Hot-swappable, versatile, and compatible with various

[Read More](#)

## **What is an SFP Optical Module? The Complete Guide to**



The complete technical guide to SFP optical modules (SFP, SFP+, SFP28). Understand the core function, compare data rates (1G to 25G), learn

[Read More](#)

## **EDGE8® Port Breakout Module , Corning**

The EDGE8® port breakout module enables conversion from a single 4-channel parallel optic port (such as 40GSR4, QSFP) to a patch panel representation with four LC duplex ports for use in a main

[Read More](#)

## **Transceivers Explained: SFP vs SFP+ vs SFP28 vs QSFP+ vs QSFP28**

In this guide, we break down the differences between these modules and help you make the best decision for your infrastructure--whether you're upgrading a legacy system, increasing the

[Read More](#)



## **What is an SFP Module? An Ultimate Guide , SFP**

What is an SFP Module? Small Form-factor Pluggable (SFP) module is a compact, hot-swappable transceiver used for both telecommunication and

[Read More](#)

## **Specifications of the Fiber Gigabit Ethernet SFP, XFP, SFP+, QSFP+**

Topic The following specifications are for the available Fiber Gigabit Ethernet modules and the platforms that support those modules. Important: The end user must ensure suitability of

[Read More](#)

## **Breakout-Capable 100G Optical Modules: Everything**



This functionality allows a single high-speed port to serve multiple lower-speed devices, improving network flexibility and port utilization without

[Read More](#)

## **SFP vs SFP+: A Complete Guide to Compatibility and**

Optical transceivers are compact, hot-pluggable devices that convert electrical signals into optical signals, enabling high-speed data transmission

[Read More](#)

## **Server Optical**

Offering 10GbE, 25GbE, and 100GbE dual-speed optical transceivers, customers with high-bandwidth applications can seamlessly transition servers to higher speeds.

[Read More](#)



## **SEP 100G QSFP28 New Original ER4 40 kilometers SMF Module**

The SEP 100G QSFP28 Optical Transceiver Module is designed for use in 100GBASE Ethernet throughput up to 40km over single mode fiber (SMF) using a wavelength of 1310nm via duplex LC

[Read More](#)

## **Optical Modules for Huawei S Series Switches**

A switch must use optical or copper modules that have been certified for use on Huawei switches. Non-certified optical or copper modules cannot ensure transmission reliability and may affect service

[Read More](#)

## **View the Optical Module Status on a Switch through the**

This article provides instructions on how to view the Optical Module Status on your switch through the Command Line Interface (CLI).



[Read More](#)

## **SEP 100G QSFP28 High Quality ER4 40 kilometers SMF Module**

SEP100G QSFP28 Optical Transceiver Module is designed for use in 100GBASE Ethernet throughput up to 40km over single mode fiber using a wavelength of 1310nm.

[Read More](#)

## **How To View The Port Status And Optical Module Information For**

When optical modules are operating in a switch, it is usually necessary to read the internal information of the module to understand its working status, including the module's

[Read More](#)



## Understanding Optical Modules

On an optical network, a sender needs to convert electrical signals into optical signals before sending them to a receiver, and the receiver needs to convert received optical signals into

[Read More](#)

## SEP 100G QSFP28 New Original ER4 40 kilometers SMF Module

SEP 100G QSFP28 Optical Transceiver Module is designed for use in 100GBASE Ethernet throughput up to 40km over single mode fiber using a wavelength of 1310nm.

[Read More](#)

## Optical Module Encapsulation Types

Compared with SFP optical modules, eSFP optical modules support monitoring of optical module alarms, temperature, and performance events. The eSFP and SFP optical modules have the same

[Read More](#)



## Spec Sheet

These high performance and low power consumption AOCs are Ethernet, InfiniBand and MSA compliant with a robust construction, including a high-strength pull tab latching system which reduces plug loss

[Read More](#)

## Contact Us

---

For datasheets, pricing, or custom data center infrastructure solutions, please visit:  
<https://www.zeldaterblanchephotography.co.za>