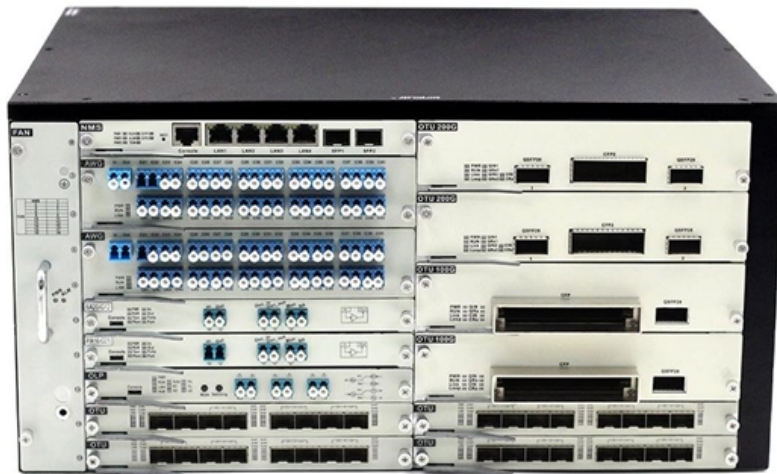


Slovakian Explosion-proof Distribution Box Control Box





Slovakian Explosion-proof Distribution Box Control Box

Prefabrication of EX control panels, boxes and energy

Scheme design, prefabrication of equipment for operation in hazardous areas and their subsequent installation on the site is our specialty. Below you will find a

[Read More](#)

Distribution Boxes

Distribution Boxes BXM (D)51 Series Explosion proof Distribution Boxes Lighting/Power (Ex d e IIB) Distribution Boxes BXM (D)53 Explosion proof

[Read More](#)



Atex Certified Junction Boxes, Terminals, Sockets

These explosion proof junction boxes / terminal boxes, plugs, sockets & connectors are for use in explosive atmospheres in compliance with the ATEX 94/9/EC

[Read More](#)

Explosion-proof junction Boxes , Cortem S.p.A.

The explosion-protected junction and pulling boxes, available in different methods of protection and materials, can also be used with terminals, as a command and

[Read More](#)

Ex Isolation Switch/Safety Switch/Circuit Breaker Manufacturers

The main products have obtained ATEX EU explosion-proof certification and IECEx international explosion-proof certification. CZ has agents or offices in 28 countries and regions, and welcomes

[Read More](#)



Control and Distribution Panels , Ex d , EJB Series

The enclosure series EJB forms the optimal basis for the application-specific configuration of terminal boxes, control stations as well as control and distribution

[Read More](#)

5 Key Factors to Consider When Selecting Explosion Proof Distribution Boxes

Selecting explosion-proof distribution boxes protects the safety of your staff in any potentially hazardous workplace. HEXLON stands out as a trusted provider of explosion-proof

[Read More](#)



Merlin Gerin Explosion-Proof Distribution Box

Protect electrical systems in hazardous environments with the Merlin Gerin Explosion-Proof Distribution Box. Ideal for industries like petrochemical, mining, and chemical, it provides reliable safety and

[Read More](#)

Understanding Different Explosion-Proof Methods for Control Boxes

Various explosion-proof methods are designed to prevent ignition and protect equipment and personnel. This article explores the primary explosion-proof methods for control boxes, their

[Read More](#)

Explosion-Proof Distribution Box , Safe Power Control - DDY GROUP

This explosion-proof distribution box is built for reliable protection in demanding



industrial settings. It supports stable distribution and helps reduce risks linked to exposed electrical components.

[Read More](#)

Energy Distribution

With the involvement of our customers right from the start, we offer significantly increased flexibility, reliability, availability, and intrinsic value. Our offerings are

[Read More](#)

Control and Distribution Panels , Ex d , EJB Series

The enclosures are certified Ex d IIB+H2 and Ex tb as well as "explosion-proof". They are available in many sizes, a wide range of operating elements and

[Read More](#)



Distribution box solutions for explosion-proof environments in

Explosion-proof distribution boxes represent where regulatory wisdom meets engineering excellence. What appears as simple protective enclosures are actually sophisticated safety systems honed

[Read More](#)

What is Explosion Proof? A Look Into Control Panels

Examples of Explosion-Proof Enclosures One example of explosion-proof standards is shown by ADALET enclosures' products. The company

[Read More](#)

LCS Control Box Manufacturers, Local Control Station Factory

Established in 1990, CZ Electric Co., Ltd. is an experienced LCS Control Box Manufacturers, headquartered in Jiaying City, Zhejiang Province, with more than 30



years of experience in industry

[Read More](#)

Explosion-Proof Electrical Distribution Boxes: Applications in

Types of Explosion-Proof Boxes Various types of explosion-proof boxes are engineered to meet specific operational requirements in hazardous environments. These include junction boxes, control panels,

[Read More](#)

Ex Local Control Stations & Distribution Boxes - Atex

Control devices and control units are assembled clearly in control stations. Every control station is designed and custom made manufacture to order. The robust

[Read More](#)



Box Enclosures & Distribution Panels

Home / Category Lightings Control Equipment Installation Equipment Cable Gland and Pipe Fittings AC & Ventillation System Distribution Boxes and Empty

[Read More](#)

Explosion Protected Control Boxes ,Innovations , R. STAHL

All contact elements, individual lamps and control elements can be installed directly inside the enclosure cover, making mounting simple. This allows for unprecedented space inside the explosion proof

[Read More](#)

Custom CZ1490 Explosion-proof distribution boxes

CZ1490Explosion-proofdistributionboxesProdcutsFeatures:Circuitbreakers,magnetic starters, big switches and other normal components can be mounted



Explosion Proof Control Box CZ1340

Flameproof and explosion proof approved for hazardous area usage - Zones 1 and 2.
Specs: Ex ed IIC T6/T5/T4 Gb DIP A21 TA,T6/T5/T4 Intended use:

[Read More](#)

Explosion-Proof Distribution Box , Safe Power Control - DDY GROUP

Reliable Explosion-Proof Distribution Box for Ultimate Safety An explosion-proof distribution box helps protect electrical systems in hazardous environments. Sparks or overloads can damage equipment

[Read More](#)



Explosion Protected Control Boxes ,Innovations , R. STAHL

The 8150 series sits perfectly alongside R. STAHL's portfolio of other explosion proof and hazardous areas equipment, including junction boxes, controllers, control boxes and distribution boxes. No

[Read More](#)

Terminal boxes , Junction boxes , Ex , Ex e , Ex d , ATEX , Explosion

Safely conduct, connect and distribute energy in hazardous areas with R. STAHL's terminal boxes. We offer bespoke, custom-made terminal boxes and terminal box combinations, as well as standard

[Read More](#)

BM (D)X-Series Explosion Protected Distribution Box

BM (D)X-Series Explosion Protected Distribution Box Explosion protection -IECEX (IEC)
-ATEX (CENELEC,EN) -China Ex (GB) Application in hazardous area



[Read More](#)

HRMD91 Explosion proof Distribution Box (Ex d IIB+H2)

HRMD91 Explosion proof Distribution Box Explosion protection to - IEC - CENELEC - NEC
Can be used in Zone 1 and Zone 2 Zone 21 and Zone 22 Class I, Zone 1

[Read More](#)

Contact Us

For datasheets, pricing, or custom data center infrastructure solutions, please visit:
<https://www.zeldaterblanchephotography.co.za>