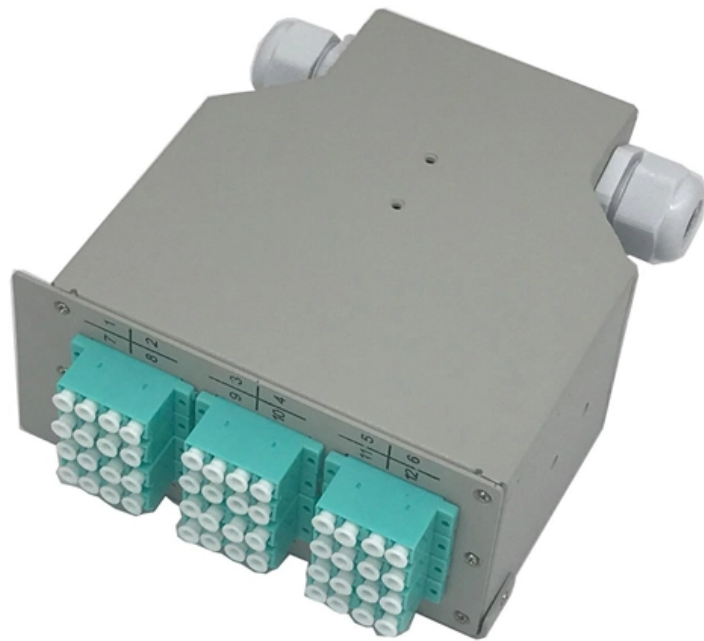




**ZTP Thermal & Power**

# **Specifications of metal connection plates for distribution boxes**





## Specifications of metal connection plates for distribution boxes

---

### What you need to know about the manufacturing process of distribution

Only after passing \*all\* relevant tests is the distribution box approved for packaging and shipping. It's this QC that transforms assembled components into certified electrical equipment. More

[Read More](#)

### TECHNICAL SPECIFICATION FOR LT DISTRIBUTION BOX

General Technical Particulars for LT Distribution Boxes : - The L.T. Distribution Boxes should be of the dimensions as per the drawing & details in the table furnished.

[Read More](#)



## **The Technical Specifications for Fiber Distribution Boxes**

The fiber distribution box, a crucial component in optical fiber networks, serves a dual purpose of managing and protecting optical fibers while facilitating

[Read More](#)

## **DRAFT SPECIFICATION FOR L. T. DISTRIBUTION BOX OF**

DRAFT SPECIFICATION FOR L. T. DISTRIBUTION BOX OF DISTRIBUTION TRANSFORMER (DTR) OF DIFFERENT RATINGS WITH INCOMING PORCELAIN REWIREABLE FUSE UNIT AND

[Read More](#)

## **DISTRIBUTION BOARDS CATALOG**

Sufficient knockout features in box wrapper and gland plate ensure easy routing of cables. Easy to remove knockouts and gland plate with easily breakable features reduce installation time.



## **Mounting Plates Power Distribution, BMP, 175x570x2mm**

The steel mounting plate contributes to speeding up the assembly of the terminal box since it can be machined easily and equipped with components before being mounted.

[Read More](#)

## **TECHNICAL SPECIFICATIONS FOR TAMPER PROOF SERVICE CONNECTION BOX**

1.0 SCOPE: 1.1 This specification covers the design, manufacture, testing of tamper proof, shock proof and rust proof Service Connection Boxes duly fitted with spring loaded constant pressure multi

[Read More](#)



## **Electric Panel Installation Method Statement**

This document provides a method statement for installing and terminating electric panels and distribution boxes. It outlines 4 steps: 1) Pre-installation preparation

[Read More](#)

## **Distribution Box**

Metal Distribution Box Features Continuously welded seams Foam-in-place seamless gasket 120-degree opening heavy-duty industrial hinges IP66 protection rating against dust and water according

[Read More](#)

## **Steel Connections Dimensions & Drawings**

Steel connections are used to join two or more steel members together to form a stable and secure structure. The most common types of steel

[Read More](#)



## **Area distribution boxes with connectors**

5. Installation The area distribution box associated with the copper or optical feedthrough sockets allows total flexibility: the connections close to the workstation are centralised. The copper or optical fibre

[Read More](#)

## **TECHNICAL SPECIFICATION FOR LT DISTRIBUTION BOX**

This specification covers design, manufacture, assembly, testing at manufacturer's works, supply and delivery at site of all terminal connectors of 33KV equipment (mainly breaker, isolator,

[Read More](#)

## **26 05 33.16 Boxes for Electrical Systems**



Connect wires as branch circuitry as required per plans and in accordance with N.E.C. and AHJ requirements using UL listed wire connectors. Ensure that device(s) and junction box are properly

[Read More](#)

## **Connection Plate Supplier & Manufacturers**

Material: Typically made from high-quality copper or aluminum for excellent conductivity, with additional plating or coating for corrosion resistance. Finish:

[Read More](#)

## **Metal Electrical Box**

The metal distribution boxes and boards that we offer have a wide range of applications. Find metal electrical boxes at low prices and buy now!

[Read More](#)



## **Technical Specifications for Distribution Boxes and Switch Boxes**

The enclosure materials of distribution boxes and switch boxes are generally steel plates; insulating plates are also acceptable, while wooden materials are not recommended.

[Read More](#)

## **Metal distribution box - Distribution boxes - Tracon Electric**

Plastic safety lock (2) Masked metallic power distribution box (13) Metal plate power distribution box with mask (surface mounted version) (4) Metal plate power distribution box with mask (recessed version)

[Read More](#)

## **Secure Connection Guide For Waterproof Distribution Box Support**



Tighten stainless steel bolts to the specified torque settings to prevent loosening. Technical Specifications for Mounting Components The choice of materials directly impacts the lifespan of an

[Read More](#)

## **Technical Specifications for Distribution Boxes and Switch Boxes**

1. The enclosure materials of distribution boxes and switch boxes are generally steel plates; insulating plates are also acceptable, while wooden materials are not recommended. 2. Distribution boxes and

[Read More](#)

## **TECHNICAL SPECIFICATION I.R.O. 63,100,160 & 315 KVA**

Distribution Boxes shall have Isolator (Switch Disconnecter) on incoming circuit and Porcelain CUTOUT fuse base disconnecter on outgoing circuits with necessary interconnecting Bus Bars.

[Read More](#)



## Distribution Box and Selection Guide

Distribution Box Selection Guide This guide provides information on how to select the appropriate Distribution Box for Electric project. If you have any

[Read More](#)

## Business Documentation (DBD)

1. Purpose The purpose of this document is to detail the technical requirements of Northern Powergrid (the company) in relation to retrofit cable boxes for ground mounted distribution transformers or

[Read More](#)

## Contact Us

---

For datasheets, pricing, or custom data center infrastructure solutions, please visit:  
<https://www.zeldaterblanchephotography.co.za>