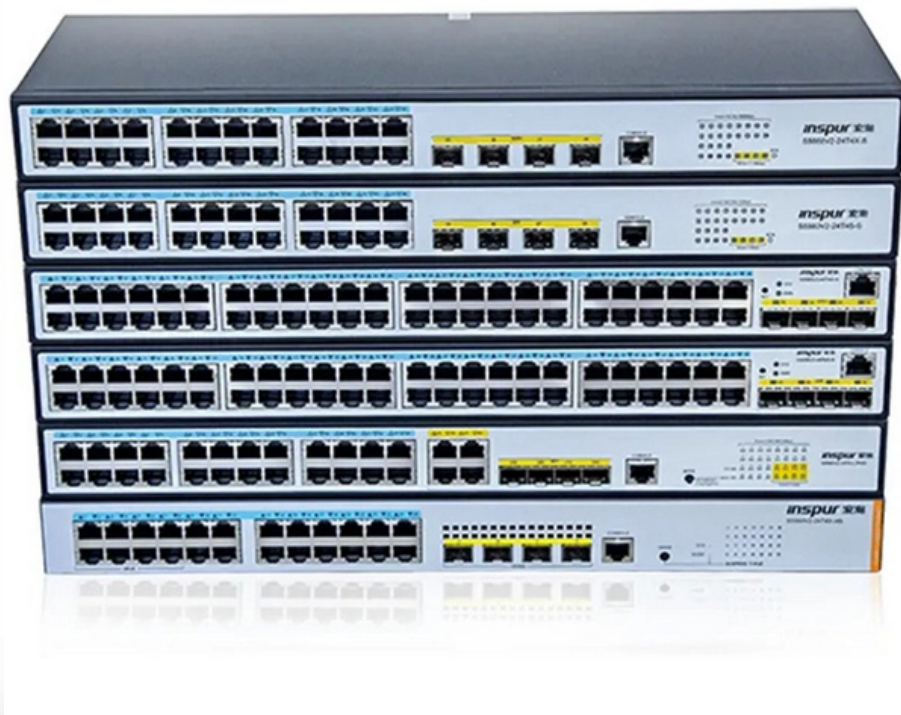


# Standard Diagram of Switch Hole Dimensions in Distribution Boxes





## **Standard Diagram of Switch Hole Dimensions in Distribution Boxes**

---

### **Distribution Boxes Types - The Complete Guide**

The power distribution boxes deliver electricity from the main electrical main to other circuits. Several distribution boxes are designed for specific use in

[Read More](#)

### **Electrical Box Size Guide: Nec Standards For Safety**

Electrical box sizes are determined by the number and size of the conductors and devices they will contain. The dimensions of electrical boxes are standardized by the National Electrical Code

[Read More](#)



## **Crouse-Hinds series Steel Switch and Outlet Boxes technical data**

Article 314 of the National Electrical Code® (NEC®) covers the installation and use of boxes. The article includes table references that guide the electrician in the selection of the proper size box necessary

[Read More](#)

## **Technical Specifications for Distribution Boxes and Switch Boxes**

This document sets forth technical, installation and safety specifications for distribution boxes, switch boxes and cabinets. It stipulates requirements for enclosure materials, installation dimensions, the

[Read More](#)

## **CP Catalog\_2015 HR.pdf**

Eaton's Crouse-Hinds Series steel boxes are listed with UL File No. E-23156 and Eaton's



Crouse-Hinds Series non-metallic boxes are listed with UL File No. E-102328 and UL (2 HR fire rated) File No.

[Read More](#)

## **Distribution switchboards**

Distribution switchboards, including the Main LV Switchboard (MLVS), are critical to the dependability of an electrical installation. They must comply with well-defined standards governing

[Read More](#)

## **How to Measure Screw Spacing on Wall Switchplates**

How to Measure Non-Standard Screw Hole Spacing If you have an odd-sized electrical box, your screw spacing may be different. Follow these tips to get an

[Read More](#)



## **WSDOT Roadside Electrical and Electronic System Standards**

This standard also does not address any moveable bridge, marine terminal, vessel, or related electrical systems. Only one electrical system may be run through any connected conduit, junction box, or

[Read More](#)

## **NEC Reference Metallic Boxes**

NEC® Reference Article 314 of the National Electrical Code® covers the installation and use of boxes. The article includes table references that guide the electrician in the selection of the proper box size

[Read More](#)

## **Electrical Control Panels & Distribution Boxes: Sizes,**

Electrical control panels and distribution boxes are the backbone of modern electrical



systems. From powering homes and industrial facilities to

[Read More](#)

## **261000 rev 092322 final**

Control boxes shall not be mounted underground unless potted. Acceptable Switch manufacturers include S& C, G& W or FS approved equal. Switches shall be manually operated and load

[Read More](#)

## **Requirements And Specifications For Installation Of**

Inflammable and explosive environments, explosion-proof distribution boxes should be selected and explosion-proof treatment should be carried out.

[Read More](#)



## **Corsi\_2000\_it**

The functional dimensions are equal to the useful space for installation of the apparatus. The wall-mounted structures cannot be placed on top of each other. In this catalogue, reference is always

[Read More](#)

## **How to determine the size, installation method and**

When the switches are arranged in two rows, the wiring of the switches should be considered. Of course, there is no final conclusion on the size of the electric box.

[Read More](#)

## **Dimensional Measurement of Distribution Board,**

This section explains the measurement points of the enclosures of distribution boards, switchboards, control panels, and cubicles (which require short delivery



## **Distribution Boards & Consumer Units**

Distribution boards, together with modular ABB system pro M Compact protection devices and Modular Din Rail Components, can be used for many applications in electrical building installation. Solutions

[Read More](#)

## **2026 NEC Electrical Junction Box Sizes Guide:**

Choosing the right electrical junction box size is crucial for safety and code compliance in your US projects. This guide helps you determine the correct

[Read More](#)

## **Get Your Ultimate Standard Electrical Box Drawing**



This downloadable file gives you all the precise, standardized dimensions you need. It details the box height, width, and depth, the exact

[Read More](#)

## **Distribution Board**

The Distribution Board, refers to an equipment which consists of bus bars, and possible switches, fuse links and Automatic protective equipment, bypass equipment, for connecting, controlling and

[Read More](#)

## **Distribution Box and Selection Guide**

Distribution Box Selection Guide This guide provides information on how to select the appropriate Distribution Box for Electric project. If you have any

[Read More](#)



## **Standard electrical wall mounting box specifications for**

I was wondering what the standard electrical wall mounting box used for sockets in america was. I was also wondering what the specifications for these

[Read More](#)

## **Electrical Box Dimensions: Find the Right Size for Any**

Learn standard electrical box dimensions for outlets, switches, and junction boxes. Compare sizes, depths, volume, and clearance for safe installations.

[Read More](#)

## **Standard Electrical Enclosure Sizes: Chart, Dimensions**

Electrical enclosure sizes are not universal, but most manufacturers follow common size families. This guide explains typical wall-mount and floor



## **A Definitive Guide To Distribution Boxes**

The distribution box acts as the center of power distribution, distributing electricity to all connected devices. A distribution box, also known as a distribution board, panel board, breaker

[Read More](#)

## **Major types of electrical boxes Technical specifications**

Technical specifications There are 10 major types of electrical boxes used in Canada. All these types of boxes serve specific purposes and are offered with various features / characteristics.

[Read More](#)



## TECHNICAL SPECIFICATION I.R.O. 63,100,160 & 315 KVA

Distribution Boxes shall have Isolator (Switch Disconnecter) on incoming circuit and Porcelain CUTOUT fuse base disconnecter on outgoing circuits with necessary interconnecting Bus Bars.

[Read More](#)

### Contact Us

---

For datasheets, pricing, or custom data center infrastructure solutions, please visit:  
<https://www.zeldaterblanchephotography.co.za>