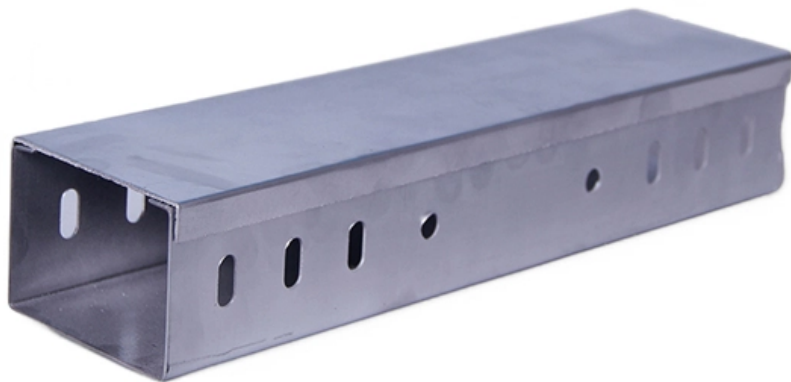


# **Standard Table for Thickness of Galvanized Mesh Cable Trays**





## Standard Table for Thickness of Galvanized Mesh Cable Trays

---

### Cable Trays

Heavy duty cable trays and cable ladders are manufactured from pre-galvanized or hot-dipped galvanized sheet metal, designed to meet ideal environmental

[Read More](#)

### CABLE LAddEr TrAY

SFSP produces a variety of products ranging from cable management systems; cable trays, cable ladders, basket trays, trunkings and support systems, to mechanical cladding fixations, steel lintels

[Read More](#)



## 12-SDMS-06

Cable tray shall be fabricated either from corrosion resistant metal such as aluminum alloy or carbon steel with corrosion resistant coating such as zinc coatings as specified in the data schedule.

[Read More](#)

## 26 05 36 Cable Trays for Electrical Systems

Description: This product category covers metal cable trays and metal cable tray systems intended for field assembly and for use in accordance with Article 392 of NFPA 70.

[Read More](#)

## CABLE TRAY

Cable Support Systems are well designed to provide necessary support for cable trays, cable ladders and trunkings. Cable supports are manufactured according to common standards from high quality



[Read More](#)

## **Cable Tray Technical Guide A practical guide to product selection and**

A practical guide to product selection and installation This guide for engineers and installers has been developed by ABB as a practical reference regarding cable tray characteristics, installation, and

[Read More](#)

## **Wire Mesh Cable Trays Technical Information Detailed,**

Trays shall be supported at a maximum span of 2.5m by trapeze, wall, floor or channel mounting methods and will not exceed maximum loads as specified by

[Read More](#)



## **MEKA® Wire Mesh Trays**

MEKA® Wire Mesh Trays Meka's wire trays can be used in a versatile way, in various cable and cable trunking solutions. These light trays are available as Electro-galvanized steel EG, pre-galvanized

[Read More](#)

## **Cable Tray Technical Specifications , PDF**

The document provides a technical data sheet for cable trays including ladder and perforated types. It lists specifications for material, thickness, dimensions, loading

[Read More](#)

## **Standard Wire Mesh Cable Tray**

Having 2" x 4" mesh allows consistent airflow prevents heat buildup, appearance of dust, bacterial proliferation and contaminants. Our Wire Mesh Cable Tray is

[Read More](#)



## **LEGRAND CABLE TRAYS TECHNICAL GUIDE**

NEMA VE 1-2017 Specifies requirements for metal cable trays and associated fittings designed for use in accordance with the rules of Canadian Electrical Code, Part I and the National Electrical Code®

[Read More](#)

## **GUIA BASOR G02 IMPRENTA\_ENERO22\_OK\_BAJA**

According to the American standard UL 568 "Nonmetallic Cable Tray Systems", the tray shall have enough dielectric strength to withstand the ASTM D 149 test with the application of a voltage of

[Read More](#)

## **GALVANIZED STEEL WIRE MESH TRAY**



Cable trays and all Support Systems are manufactured based on European standards as certified by TSE EN 61537 Products are coated with Hot Dip galvanising according to TS 914 EN ISO 1461

[Read More](#)

## **Galvanized Steel Wire Mesh Cable Tray Designed for**

Hot Dipped Galvanized - for outdoor use to BS EN 1461-1999, between 60 and 80 microns thick Electrolytic Polishing - for stainless steel use Installation Notice:

[Read More](#)

## **Cable Tray Specifications and Sizes**

The document specifies requirements for cable trays, including that they be fabricated from galvanized sheet steel in standard lengths and widths. It provides

[Read More](#)



## Wire Mesh Cable Trays

The welded wire cable tray is also named wire basket cable tray according to the forms of the configured welded wire mesh structures. Our wire mesh cable trays

[Read More](#)

## Cable Tray Specifications and Guidelines

This document provides general guidelines for cable trays and their installation. It discusses the different types of cable trays, including perforated

[Read More](#)

## Cable Tray Technical Guide A practical guide to product selection and

Conductors used in cable tray must be specified in Table 19 of the CEC and, except where permitted under paragraphs [12-2202(2)] and [(3)], covered by a continuous



metal sheath or an interlocking

[Read More](#)

## Technical Requirements for Wire Mesh Cable Trays

Wire mesh cable tray technical requirements are crucial for the success of cable management and wiring systems. Our wire mesh cable trays undergo strict quality control and testing to ensure their

[Read More](#)

## Microsoft Word

Cable Tray Types & Specification Perforated Cable Trays Features Moderate ventilation with added cable support advantage Thickness available 1.2mm, 1.6mm, 2.0mm, 2.5mm, 3.0mm. Standard

[Read More](#)



## **Mesh cable tray systems**

Mesh cable tray systems Mounting instructions © 2020 OBO Bettermann Holding GmbH & Co. KG Reprinting, even of extracts, as well as photographic or electronic reproduction are prohibited! Table

[Read More](#)

## **cable tray technical specifications**

Armorduct cable tray systems are usually assembled using M6 roofing bolts particularly for couplers, fishplates and connection to supporting framework. It should be noted that independent testing has

[Read More](#)

## **IEC Standard for Cable Tray: Complete Technical Guide**

One of the most recognized frameworks globally is the IEC standard for cable tray



systems. This standard ensures safety, durability, and performance

[Read More](#)

## **Microsoft Word**

Continuous, rigid, welded steel or stainless steel wire mesh cable management system. Cable tray systems are defined to include, but are not limited to, straight sections, supports and accessories.

[Read More](#)

## **Galvanized Cable Trays - Mesh & Steel**

Versatility: Galvanized Cable Trays are versatile in their applications, catering to a wide range of industries and environments. Whether for industrial complexes,

[Read More](#)



## **WIRE MESH CABLE TRAYS - Demka Electrical Suppliers**

Wire mesh cable trays are made by compounding wire cable conduits with horizontal wires running vertically every 100 mm and vertical wires running horizontally every 50 mm.

[Read More](#)

## **Cable Tray Size and Dimensions: How to Choose the**

Learn how to calculate the perfect cable tray size and dimensions for your electrical project. This guide covers load capacity, fill ratios, and industry

[Read More](#)

## **Galvanized Mesh Cable Tray System**

The galvanized mesh cable tray is also called a basket cable tray, or grid cable tray. The galvanized mesh cable tray is made of high-quality steel materials. The



[Read More](#)

## Contact Us

---

For datasheets, pricing, or custom data center infrastructure solutions, please visit:  
<https://www.zeldaterblanchephotography.co.za>