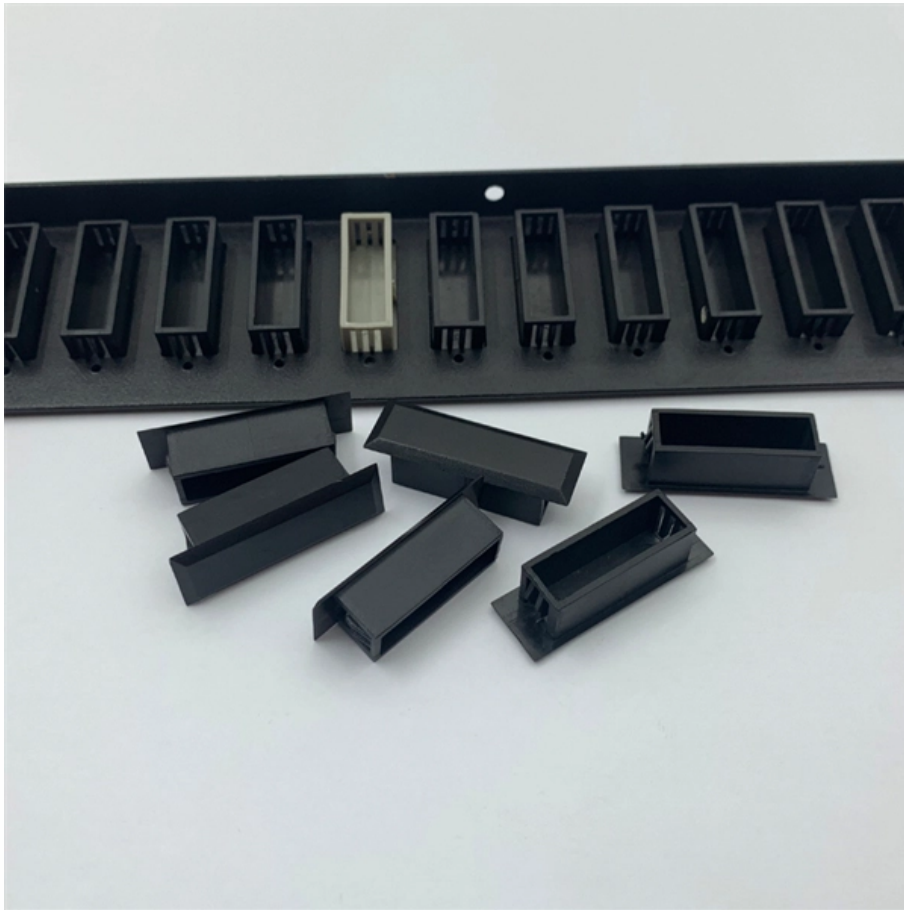


Temporary power distribution box not grounded





Temporary power distribution box not grounded

A Guide to Temporary Power Distribution Boxes , ATI

If you are managing an operation or event that calls for a sustained electrical power supply, but is also located in an area where electricity is not

[Read More](#)

50-AMP 125/250V TEMPORARY POWER DISTRIBUTION BOXES

50-AMP 125/250V TEMPORARY POWER DISTRIBUTION BOXES Q: How many 50-Amp temporary power boxes can I connect together? A: There is no limit on the number of boxes, however the total

[Read More](#)



Suitable disconnecting switches or plug connectors shall be installed to permit the disconnection of all ungrounded conductors of each temporary circuit. Multiwire branch circuits shall be provided with a

[Read More](#)

Are you human?

Are you human? Incident ID: 2026-05-10T21:20:23Z,a18a622099,52.167.144.160,1SShAddxIOWehavedetectedan abnormal number of attempts to access this website. To help us keep this site secure,

[Read More](#)

Does a Generator Need to Be Grounded? Complete

Learn if your generator needs to be grounded, the regulations, and a step-by-step guide to grounding for safety and compliance.

[Read More](#)



Temporary electrical wiring for construction sites

All 120-volt, single-phase, 15- and 20-ampere receptacles shall be of the grounding type and their contacts shall be grounded by connection to the equipment grounding conductor of the circuit

[Read More](#)

Five mistakes when installing temporary distribution boxes and how to

Discover the five most common mistakes with temporary distribution boxes and learn how to avoid them. Practical tips for installers and landlords.

[Read More](#)



Grounding System Installation Standards for Distribution Boxes and

Your distribution box is mission control for electricity in any building. When grounding fails here, it's like having a spaceship without a heat shield--everything inside becomes vulnerable to surges, faults,

[Read More](#)

Temporary Wiring: OSHA Rules for the Construction

Get answers to common questions about temporary wiring in construction, based on rules from the Occupational Safety and Health

[Read More](#)

Electrical Panel Isn't Grounded? How To Tell And What

How Do I Know if My Electrical Panel Isn't Grounded? Some online resources will tell you to use a volt meter to find out if your panel is grounded, but

[Read More](#)



How to ground the low voltage distribution box?

The low-voltage distribution box, as a device for regulating the circuit system, needs to be so. How should the low-voltage distribution box be grounded? Now let's

[Read More](#)

How To Maximize Worksite Safety When Using Power Distribution Boxes

Power distribution boxes are designed to be rugged, durable, and dependable in even the most challenging situations and outdoor environments. Safety Standards for Temporary Power

[Read More](#)



511 EM 385-1-1 Chapters 9-15

Temporary Wiring and Lighting Submit a sketch of the temporary power distribution systems for approval, including location, voltages, and protection means. Perform testing of temporary electrical

[Read More](#)

Managing Electrical Safety for Temporary Power on Job

Improve temporary power safety with our expert guide. Learn about NEC Article 590, GFCI protection, grounding, and OSHA standards for qualified electricians.

[Read More](#)

Portable Power Safety

This same technology is used in Ericson Spider Boxes (Ericson 1066FS). Other units might use individual GFCI's with open neutral relays - (Ericson CDU50 series). And this technology

[Read More](#)



Safety Guidelines for Temporary Power Distribution

Learn about the essential safety guidelines for temporary power distribution to protect employees from electrical hazards.

[Read More](#)

Five mistakes when installing temporary distribution boxes and how to

Temporary distribution boxes are indispensable at construction sites, events and temporary workplaces. Yet things often go wrong when installing or renting these installations,

[Read More](#)



How to Build a DIY Temporary Power Distribution Box

Securely manage job site power. Build a compliant temporary distribution box, detailing component sizing, critical grounding, and wiring integrity.

[Read More](#)

Temporary Power

Power Distribution Box, NEMA 3R Enclosure, Sled Base. Includes: (1) 50 Amp, 125/250 Volt AC, Locking, California Style CS63 Power Inlet and Feed Thru (1) 30 Amp, 250 Volt AC NEMA L6-30R

[Read More](#)

Grounding & Bonding-Temporary Power Generation and Electrical

This paper using simple terms and examples will discuss the grounding and bonding system as it relates to both permanent and temporary electrical system installations, specific



5 Benefits of Using a Temporary Distribution Box

If you're looking for a safe, efficient way to power equipment for outdoor job sites or events, read these benefits of using a temporary distribution

[Read More](#)

Grounding & Bonding Temporary Generators and Electrical

Learn what OSHA requires for temporary wiring on construction sites, from grounding and GFCI protection to overhead clearances and employer liability.

[Read More](#)

what is a temporary power distribution box?



A temporary power distribution box is a portable device designed to distribute electrical power from a single source to multiple outlets. These boxes

[Read More](#)

Temporary Power Safety

Temporary wiring must be maintained in a safe code-compliant manner. Ensure all equipment, receptacles, and flexible cords and cables are properly grounded. Use

[Read More](#)

Custom Portable Power Distribution Electrical Panels

Duralinedesignsandmanufacturesportablepowerdistributioncentersandcomponents for temporary electric service for large construction sites, plant

[Read More](#)



Contact Us

For datasheets, pricing, or custom data center infrastructure solutions, please visit:
<https://www.zeldaterblanchephotography.co.za>