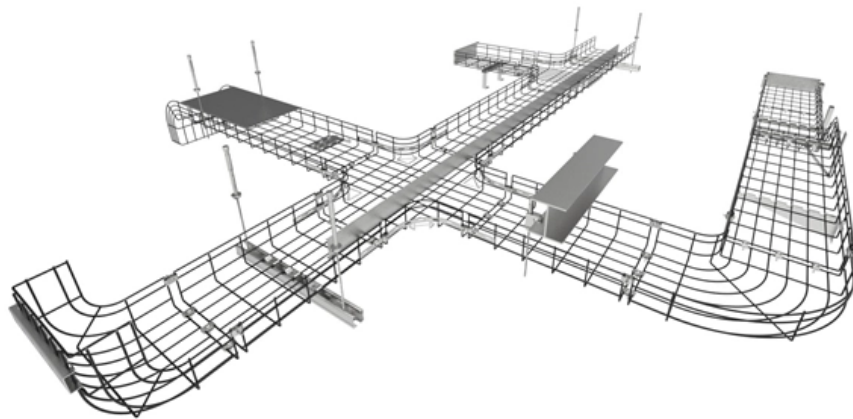




**ZTP Thermal & Power**

# **Three-level electrical distribution box construction site**





## Three-level electrical distribution box construction site

---

### How To Get Temporary Power for Your Construction

Working on a project in a remote location with no access to electricity? Here are 7 steps you can take to get temporary power for a construction site.

[Read More](#)

### three-level distribution system\_switchgear\_Switchboard\_circuit

The three-level distribution system refers to a system that distributes electric power through three levels of distribution devices from the incoming power line at the construction site to the electrical equipment.

[Read More](#)



## **Electrical System in Buildings**

This article covers the electrical system in buildings (including distribution) at a very basic level. We will discuss the general principles for how

[Read More](#)

## **Construction site electrical enclosure**

Find your construction site electrical enclosure easily amongst the 25 products from the leading brands (HLC, WALTHER WERKE, DIGITAL ELECTRIC, ) on

[Read More](#)

## **Quality Control for Installation and Construction of Electrical Riser**

Master the key quality control methods for electrical riser & distribution box installation. Ensure safety, compliance, and prevent hazards in building electrical systems.



## **Key Points Of Installation And Collocation Of Distribution Box In**

1. The power distribution system at the construction site shall be distributed in different levels. The main distribution box (or distribution room) shall be set up. The distribution box shall be set

[Read More](#)

## **Electrical safety on construction sites**

This guidance is aimed at those responsible for planning and subsequent management, and those who control the installation and use of electrical systems and equipment on construction sites. This

[Read More](#)



## **Primary and secondary power distribution systems**

Secondary distribution systems A low-voltage network or secondary network is a part of electric power distribution which carries electric energy from

[Read More](#)

## **The Meaning and Function of Primary, Secondary, and Tertiary**

Used in construction or other project sites, supplying power to specific zones such as buildings or floors. Part of a three-tier protection system, ensuring power safety at intermediary stages.

[Read More](#)

## **The installation requirements for the distribution box**

A distribution box is the heart of any electrical system. It takes the incoming power and safely distributes it to different circuits throughout your



## **Planning of Electric Power Distribution**

To this end, we are launching a new series, whereby volume 2 will consist of several individual modules. This newly designed first volume, "Planning of Electric Power Distribution - Technical Principles",

[Read More](#)

## **Power supply on the construction site**

A construction power distribution box is an essential part of a construction site as it ensures that the power needs of all the equipment and machinery on the site are met.

[Read More](#)

## **ENERGYBOX Assemblies for Construction Sites (ACS)**



The panels are made in a sturdy and handy two-component technopolymer cabinet with a fire-resistant backrest, which allows them to be stored and reused in the

[Read More](#)

## **UNDERGROUND ELECTRIC DISTRIBUTION CONSTRUCTION**

The Builder shall keep the premises, right-of-way and adjacent property free from accumulations of waste materials, rubbish and other debris resulting from the work, as well as all tools, construction

[Read More](#)

## **Site Boxes in stock at One Elec: express delivery**

A site box is an electrical device used on temporary sites such as construction sites, market stalls, campsites and trade fairs. It provides temporary electrical distribution before the electrical panel is

[Read More](#)



## **What are the primary, secondary and tertiary distribution boxes?**

It is specially designed for the special situation of the project construction site and meets the relevant construction power specifications and standards of the construction department.

[Read More](#)

## **What is Level 1, Level 2 and Level 3 distribution box**

Three level protection refers to: on-site construction of electricity must be done in the general distribution box, distribution box and switch box to install leakage protection.

[Read More](#)

## **In-depth Analysis of Temporary Three-Level Distribution Box Function**



This video details the design standards of this red construction site distribution box, its internal breaker configuration, and how to ensure electrical safety during construction.

[Read More](#)

## **Requirements for distribution box at construction site**

2? The rated value and action setting value of the main distribution box shall be compatible with the rated value and action setting value of the branch switch. 3? The electrical components and leakage

[Read More](#)

## **Construction of Transmission and Distribution Lines**

A transmission substation decreases the voltage of incoming electricity, allowing it to connect from long distance high voltage transmission, to local lower voltage distribution.

[Read More](#)



## **The Meaning and Function of Primary, Secondary, and Tertiary**

This explanation aims to clarify the roles and functions of primary, secondary, and tertiary distribution boxes, enhancing the understanding of these critical components in electrical distribution

[Read More](#)

## **Three-Tier Power Distribution System in a Newly Constructed**

Learn about the three-tier power distribution system (main secondary tertiary distribution boards) in a new residential area including their roles connections and safety measures for 0.4kV power supply.

[Read More](#)

## **The Meaning and Function of Primary, Secondary, and Tertiary**



Differences Between Primary, Secondary, and Tertiary Distribution Boxes Primary Distribution Box: Designed for construction or large-scale projects as a main distribution point. Built to meet specific

[Read More](#)

## **Everything You Need to Know About Temporary Power**

Portable construction boxes give you the immediate, consistent electricity you need to provide essential services at all times. Since power

[Read More](#)

## **Power distribution inside large buildings , EEP**

In large buildings the type of distribution depends on the building type, dimension, the length of supply cables, and the loads. The distribution system can

[Read More](#)



## Summary of key points for construction and installation of distribution

The construction and installation points of distribution boxes and switch boxes are summarized as follows: 1. Select qualified products that meet national standards and safety requirements.

[Read More](#)

## Distribution Inside Large Buildings

Distribution Inside Large Buildings In large buildings the type of distribution depends on the building type, dimension, the length of supply cables, and the loads. The distribution system can be divided in to:

[Read More](#)

## Contact Us

---

For datasheets, pricing, or custom data center infrastructure solutions, please visit:  
<https://www.zeldaterblanchephotography.co.za>