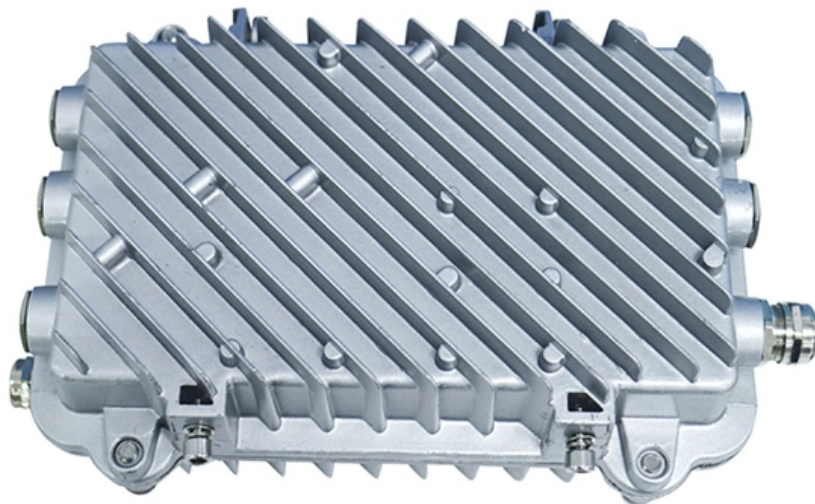


Troubleshooting Lighting Distribution Boxes





Overview

Check the electrical load and ensure that the sensors do not exceed the 10 Amp maximum. Systematic troubleshooting can quickly restore functionality and identify root causes. Maintain Low Voltage Distribution Boxes with regular inspection, cleaning, and preventive care to ensure safety, reliability, and longer service life. Distribution boxes are the unsung heroes of our electrical systems, quietly managing power until something goes wrong.



Troubleshooting Lighting Distribution Boxes

Common troubleshooting of distribution boxes: analysis of causes of

Distribution boxes are the unsung heroes of our electrical systems, quietly managing power until something goes wrong. When they start tripping, overheating, or making strange noises, it's more

[Read More](#)

What are the common problems of distribution boxes?

The main problems encountered with distribution boxes include installation and layout problems, electrical connection and grounding problems,

[Read More](#)



Power Distribution , Troubleshooting

Be sure that the power distribution box has sufficient power provided to it. Long cable runs can result in a voltage drop, which can be solved by using a heavy gauge wire. Check wires/DIN terminal clasps

[Read More](#)

Septic System D-Box Problem Diagnosis

Septic system D box installation, specifications, inspection, diagnosis, and repair: in this article series about septic system drop boxes we describe the best procedures for locating and inspecting,

[Read More](#)

Lighting Accessories , Power Distribution Boxes

Power distribution boxes deliver structured, professional solutions for managing lighting power in complex environments. Whether you're organizing circuits in



Common Issues with Junction Boxes and How to Fix Them

However, with time, junction boxes can develop issues. Safety hazards can arise because of loose connections, overheating, corrosion, and

[Read More](#)

The Complete Guide to Distribution Box: Installation, Types & More

Blog The Complete Guide to Distribution Box: Installation, Types & More By Admin Aug 2, 2025 No Comments # distribution box Introduction Electrical systems power our homes, offices, and

[Read More](#)



What Are the Common Troubleshooting Issues with Lighting

Other issues include flickering lights, which may point to a loose neutral connection either at the breaker or a junction box. Complete failure of multiple circuits could indicate a problem

[Read More](#)

Why Is My Light Not Working? A Step-by-Step Troubleshooting Guide

Safely troubleshoot your non-working light fixture. Follow a systematic guide through simple fixes, wiring, and electrical panel checks.

[Read More](#)

How to Troubleshoot Common Issues with Low Voltage Lighting

Troubleshooting these problems can save both time and money and ensure that the lighting system continues to operate efficiently. This blog explores how to troubleshoot



common issues with low

[Read More](#)

Understanding Distribution Boxes: Your Guide to Power

Weatherproof Distribution Boxes These serve specific outdoor purposes, with rain, dust, and extreme temperatures sealed shut, protecting any

[Read More](#)

How to Troubleshoot a Light Fixture , Detailed Guide (2026)

When considering how to troubleshoot a light fixture, tackle minor problems yourself with care, but always consult a professional for complex electrical concerns. A well-functioning light fixture

[Read More](#)



Common Issues and Troubleshooting for 3 Phase Electrical

This blog explores common problems associated with 3-phase power distribution boxes and offers practical troubleshooting tips to keep your system running smoothly.

[Read More](#)

Power Distribution Boxes Explained Simply

Learn what a power distribution box is, how it works, key components, types, and why it's vital for safe and efficient electrical systems.

[Read More](#)

Troubleshooting Common Problems With Light Fixtures

Many problems with light fixtures are easy to diagnose--they can range from a lightbulb that is burned out to a faulty switch that needs replacement.

[Read More](#)



The installation requirements for the distribution box

Learn how to install a distribution box safely and correctly. Covers wiring, placement, standards, and expert tips for a compliant setup.

[Read More](#)

Low Voltage Distribution Boxes maintenance and care

You keep Low Voltage Distribution Boxes safe and reliable by inspecting, cleaning, troubleshooting, and following preventive steps. Regular care stops problems before they start.

[Read More](#)

Common troubleshooting of distribution boxes: analysis of



causes of

That familiar sound of your circuit breaker clicking off - we've all been there. Distribution boxes are the unsung heroes of our electrical systems, quietly managing power until something goes wrong. When

[Read More](#)

Common trouble shooting of distribution box

When the distribution box is in daily operation, with the passage of time, there will inevitably be failures, so for some common failures, some improvements can be

[Read More](#)

Electrical Energy Distribution Troubleshooting Guide

A clear troubleshooting process ensures power flows safely and efficiently. In this guide, you will learn how distribution systems work, common problems, and practical ways to diagnose issues.

[Read More](#)



MSD Misbehaving? A Step-By-Step Troubleshooting Guide For Your

We walk through the steps of troubleshooting an MSD Ignition. We cover the light, wiring, voltage checks, and how to trigger a spark. The testing is done on

[Read More](#)

How to Troubleshoot a Newly Installed Electrical Box

If you just installed your own new electrical box, and things aren't working properly, it's not fun. The good news is that most issues are easy to

[Read More](#)

Power Distribution , Troubleshooting



Use a volt meter to measure voltage at the power supply and at the power distribution box. Be sure that the power distribution box has sufficient power provided to it. Long cable runs can result in a voltage

[Read More](#)

Contact Us

For datasheets, pricing, or custom data center infrastructure solutions, please visit:
<https://www.zeldaterblanchephotography.co.za>