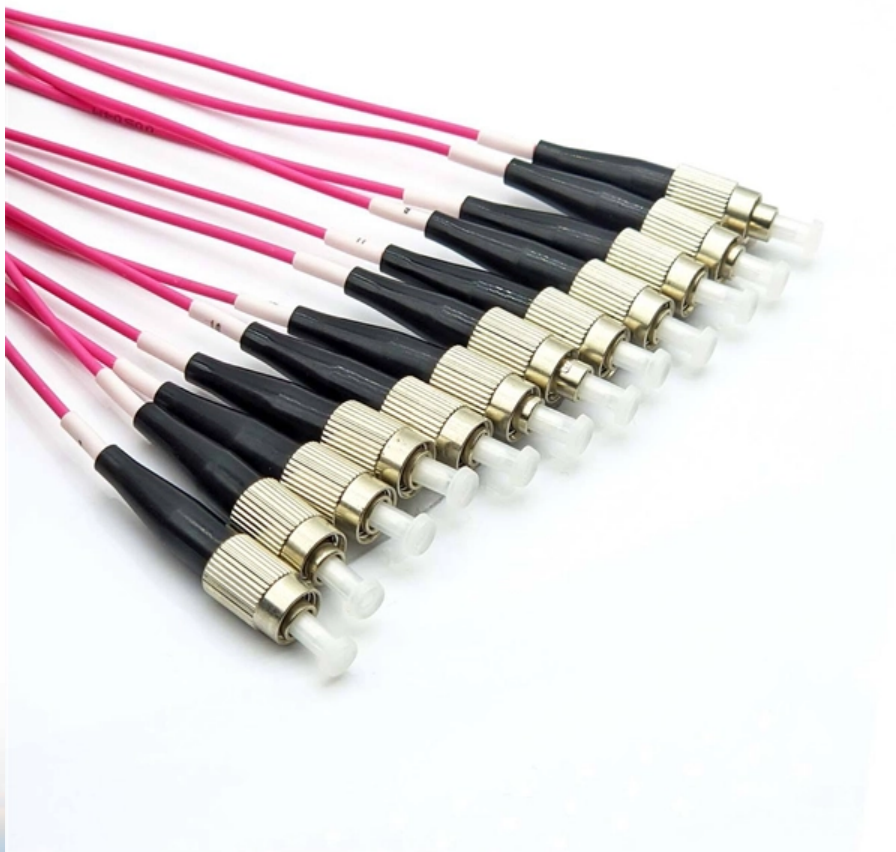


Upgraded version of Andorre reconfigurable optical add-drop multiplexer directly supplied by the manufacturer





Upgraded version of Andorre reconfigurable optical add-drop multiplexer

(PDF) Implementation of an Elastic Reconfigurable Optical Add/Drop

We designed a Reconfigurable Optical Add/Drop Multiplexer (ROADM) based on a subcarrier add/drop node in an optical communication system that is suitable for all kinds of optical

[Read More](#)

Dynamically Reconfigurable Optical Add-Drop Multiplexer/Filter

Agiltron reconfigurable Add/Drop Multiplexer (ROADM) is designed dynamically reconfigurable switching and routing applications in next generation optical communications networks.

[Read More](#)



Add-drop multiplexer

An add-drop multiplexer (ADM) is an important element of an optical fiber network. A multiplexer combines, or multiplexes, several lower- bandwidth streams of data into a single beam of light. An

[Read More](#)

Reconfigurable Optical Add Drop Multiplexer Market 2025

This market research report provides a comprehensive analysis of the global and regional Reconfigurable Optical Add Drop Multiplexer (ROADM) markets, covering the forecast period

[Read More](#)

Optical add/drop multiplexing architecture for metro area



Routers are the traffic cops of communication networks. Manufacture of routers based on various optoelectronic technologies has enabled commercial

[Read More](#)

Reconfigurable optical add-drop multiplexers for hybrid mode

A reconfigurable optical add-drop multiplexer (ROADM) using special modal field redistribution is proposed and demonstrated to enable the selective access of any mode-/wavelength

[Read More](#)

WaveReady® Multi-Degree Reconfigurable Optical Add/Drop Multiplexer

The flexible, powerful WaveReady Reconfigurable Optical Add/Drop Multiplexer (ROADM) node wavelength switching and channel grooming solution enables wavelength-agile dense wavelength

[Read More](#)



Reconfigurable Optical Add-Drop Multiplexer (ROADM)

This reconfigurable optical add-drop multiplexer (ROADM) module market research report delivers a complete perspective of everything you need, with an in-depth

[Read More](#)

Reconfigurable Optical Add/Drop Multiplexer Wavelength Switch

The Reconfigurable Optical Add/Drop Multiplexer (ROADM) switch is built on a proprietary micro-optics and micro-actuator platform with athermal grating packaging for stable wavelength performance.

[Read More](#)

ROADM: Reconfigurable Optical Add Drop Multiplexer



Learn about ROADM (Reconfigurable Optical Add Drop Multiplexer) functionality, advantages, and its role in modern fiber optic communication systems.

[Read More](#)

Reconfigurable optical add-drop multiplexer based on thermally tunable

As one of the key components of WDM optical networks, the reconfigurable optical add-drop multiplexers (ROADMs) can achieve the functionality of multiplexing or demultiplexing without

[Read More](#)

Design and evaluation of a reconfigurable optical add-drop multiplexer

Reconfigurable optical add-drop multiplexers (ROADMs) for SDM-based networks must have high scalability in terms of port count. However, the ROADM architecture adopted in present networks

[Read More](#)



TrueFlex® Reconfigurable Optical Add-Drop Multiplexer

TrueFlex® Reconfigurable Optical Add-Drop Multiplexer (ROADM) Portfolio Product Brief
TrueFlex® Telecom service providers are adapting their optical backbone networks to meet the demands of

[Read More](#)

Reconfigurable Optical Add-Drop Multiplexer Module

ROADM modules improve high-speed internet by enabling dynamic wavelength routing and bandwidth management, ensuring faster and more reliable data

[Read More](#)

Application of Optical Add/Drop Multiplexer



The optical add-drop multiplexers (OADM) are used in wavelength-division multiplexing systems for multiplexing and routing different channels of

[Read More](#)

Reconfigurable optical add-drop multiplexer

In optical communication, a reconfigurable optical add-drop multiplexer (ROADM) is a form of optical add-drop multiplexer that adds the ability to remotely switch traffic from a wavelength-division

[Read More](#)

Compact four-channel reconfigurable optical add-drop multiplexer

We designed and fabricated a four-channel reconfigurable optical add-drop multiplexer based on silicon photonic wire waveguide, which is controlled th

[Read More](#)



reconfigurable optical add/drop multiplexer , Photonics Dictionary

A reconfigurable optical add-drop multiplexer (ROADM) is a key component in wavelength-division multiplexing (WDM) optical communication networks. It allows for flexible and dynamic routing of

[Read More](#)

Implementation of an Elastic Reconfigurable Optical Add/Drop

Abstract-We designed a Reconfigurable Optical Add/Drop Multiplexer (ROADM) based on a subcarrier add/drop node in an optical communication system that is suitable for all kinds of optical multiplexing

[Read More](#)

A Flexible and Reconfigurable Optical Add-Drop Multiplexer for Mode



Reconfigurable optical add-drop multiplexer (ROADM) is one of the key building blocks for on-chip optical networks, which can download the desired signals from the bus waveguide to the

[Read More](#)

Reconfigurable Optical Add-Drop Multiplexer (ROADM)

The Reconfigurable Optical Add-Drop Multiplexer (ROADM) Module Market, valued at USD 2.83B in 2026, is projected to reach USD 4.79B by 2030, growing at a

[Read More](#)

Optical Add/Drop Multiplexers Information

Optical Add/Drop Multiplexers (OADMs) are used in wavelength-division multiplexing systems for multiplexing and routing fiber optic signals. They selectively add and

[Read More](#)



Design and evaluation of a reconfigurable optical add-drop multiplexer

Space-division multiplexing (SDM) is expected to increase the capacity of photonic networks. Reconfigurable optical add-drop multiplexers (ROADMs) for SDM-based networks must

[Read More](#)

A Flexible and Reconfigurable Optical Add-Drop Multi

Reconfigurable optical add-drop multiplexer (ROADM) is one of the key building blocks for on-chip optical networks, which can download the desired

[Read More](#)

Fully reconfigurable optical add-drop multiplexer based on parallel



Reconfigurable optical add-drop multiplexer (ROADM) with the ability of dynamic configuration will be one of the core equipment for the future optical transport networks. This paper

[Read More](#)

Design of flexible and reconfigurable optical add/drop multiplexer

Since reconfigurable optical add/drop multiplexer (ROADM) and Optical Cross Connect (OXC) were introduced, they have been upgraded more than three generations, , , . OXC can

[Read More](#)

Evolution Towards High-Dimensional Reconfigurable Optical Add

High-dimensional ROADM/OXCs, driven by cloud, 5G, and AI, use spatial super-channels and switching fabrics to enhance spectral efficiency. This paper reviews traditional ROADM/OXC designs, analyzes

[Read More](#)



Impact of the reconfigurable optical add-drop multiplexer architecture

The main goal of this paper is to analyze the impact of several MB node architectures (namely baseline, common-band and compact MB node architectures) on the total network capacity

[Read More](#)

Contact Us

For datasheets, pricing, or custom data center infrastructure solutions, please visit:
<https://www.zeldaterblanchephotography.co.za>