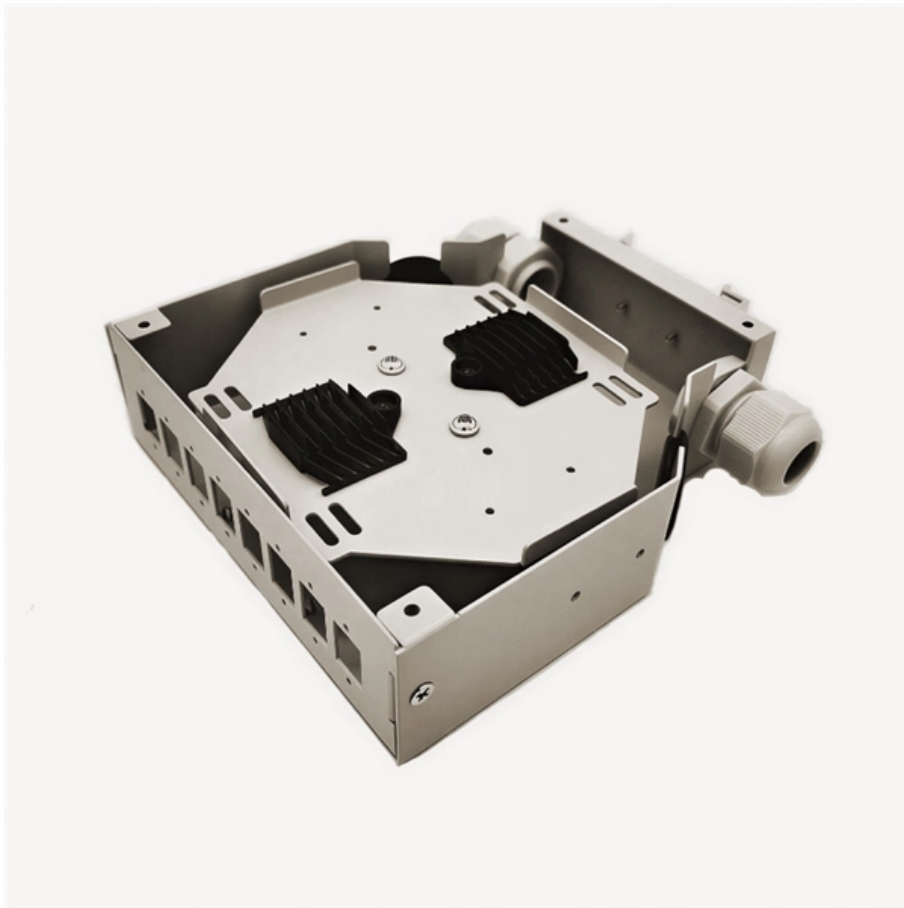


What information can an aggregation switch collect





Overview

An aggregation switch sits between access layer switches and the core network, acting as an intermediary. By bundling multiple network connections into a single high-bandwidth link, aggregation switches help. Amounts or summary statistics are used in place of atomic data rows, which are often collected from several sources when data is aggregated.



What information can an aggregation switch collect

What Is an Aggregation Switch and How It Works

Security and access control: Aggregation switches enforce access control lists (ACLs) that determine which traffic is allowed to pass between network segments. They can also handle identity

[Read More](#)

Why You Need a Fiber Aggregation Switch and How it

Q: How does a Fiber Aggregation Switch differ from a regular switch? A: In contrast to ordinary switches that connect end devices together through low

[Read More](#)



Aggregation Switch

An Aggregation or "Top-of-Rack" switch is designed to connect everything in a rack at high speeds, then have an even bigger pipe out to the rest of the network.

[Read More](#)

What is an Aggregation Switch? , Features and Practical Benefits

Additionally, the access switch includes user management features like address authentication, user authentication, and user information collection in addition to offering sufficient

[Read More](#)

Data Aggregation: How It Works

Key Takeaways Data aggregation involves collecting and combining raw data from multiple sources to create comprehensive and insightful analysis.

[Read More](#)



Aggregation Layer

Aggregation-layer submodule The aggregation-layer submodule plays a pivotal role in providing a highly reliable, scalable "middle layer" for bringing together the traffic from the access-layer submodule,

[Read More](#)

What is an Aggregation Switch?

Usually, when the aggregation switch receives data from the access switch, it will perform local routing, filtering, traffic balancing, and QoS priority

[Read More](#)

What Is an Aggregate Switch?



The aggregation switch can select an enterprise-level switch that supports security controls to stop unauthorized access and malicious information from entering the network.

[Read More](#)

Understanding the Role of Aggregation Switch in

Aggregation switches, often referred to as distribution switches, play a pivotal role in the hierarchical network architecture. These switches serve as

[Read More](#)

What is an Aggregation Switch? , Features and Practical Benefits

In terms of performance and switching speed, aggregation switches typically outperform access switches. They can route network traffic, implement network security regulations, and add a

[Read More](#)



How Switch Aggregation Works -- In One Simple Flow

Switch aggregation is transforming how networks handle data traffic. By combining multiple switches into a cohesive system, organizations can

[Read More](#)

Everything You Need to Know About Aggregation Switch

The primary function of an aggregation switch is to aggregate and forward data from multiple network devices, such as access switches, wireless

[Read More](#)

Link Aggregation: What is it, and How Does it Work?

Link aggregation is a way of bundling a bunch of individual (Ethernet) links together so



they act as a single logical link. A fundamental for effective

[Read More](#)

What Is an Aggregate Switch?

Discover the role of an aggregation switch and its function in a network. Explore differences between aggregation, access, and core switches.

[Read More](#)

What Is an Aggregation Switch?

An aggregation switch is a powerful networking device that consolidates connections from multiple access switches, providing a central point for forwarding traffic and often implementing

[Read More](#)



What Is an Aggregation Switch and How to Choose?

Discover the role of aggregation switches. Explore differences between aggregation, access, and core switches, and choose the right model for

[Read More](#)

sfp aggregation switch

This article focuses specifically on SFP (Small Form-factor Pluggable) aggregation switches and highlights their significance in network infrastructure. 1.2 Importance of Aggregation Switches

[Read More](#)

Aggregated Ethernet Interfaces Overview

Example: Configure Link Aggregation Between a QFX Series Switches and an Aggregation Switch A QFX Series product allows you to combine multiple Ethernet links into one logical interface for higher



[Read More](#)

WORLD WIDE WEB JOURNAL Home

Internet communications tools Document preparation Computing industry Computing standards, RFCs and guidelines Computer crime Language types Security and privacy Computational complexity and

[Read More](#)

Aggregation Switches

Aggregation switch is the convergence point of multiple access switches, which serve to unify the accessed data and transmitting out the data. It

[Read More](#)

Understanding the Role of Aggregation Switch in



Each aggregation switch undergoes extensive testing to ensure that it meets the highest standards of reliability and performance. Conclusion In

[Read More](#)

What Is an Aggregation Switch and How It Works

An aggregation switch sits in the middle tier of a network, collecting traffic from multiple smaller access switches and funneling it upward to the core. In a traditional three-tier network

[Read More](#)

What is Aggregation Switch? Role in Network Connection

Among them, the Aggregation Switch is the physical component of the aggregation layer, playing a crucial role in the overall network architecture.

[Read More](#)



Aggregation Switch

An aggregation switch refers to a type of switch used to connect multiple ToR switches to a core switch/router in a cloud data center network. It enables high-bandwidth aggregation ports to be

[Read More](#)

Contact Us

For datasheets, pricing, or custom data center infrastructure solutions, please visit:
<https://www.zeldaterblanchephotography.co.za>